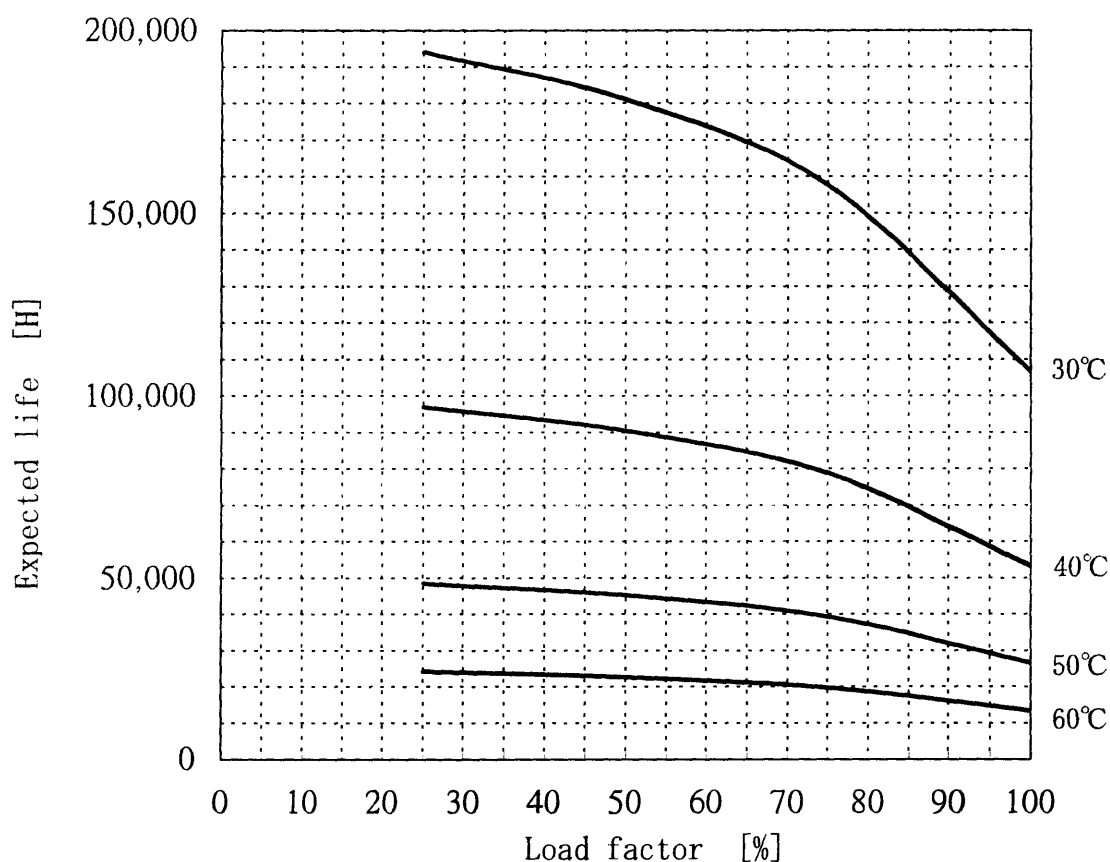


# COSEL

Date : Sep.3,1999

## LDA10F-12 Expected life : 推定寿命



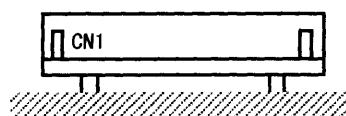
- Above expected life time is calculated according our calculation standard.  
上記推定寿命は、当社算出基準に従い算出したものです。
- Over the area of 100,000 hours, the degradation of sealing rubber, etc., is not included in the calculation.  
10万時間以上の領域では、封ロゴムの劣化等の影響は、計算式には含まれていません。
- Please refer derating curve shown in instruction manual about the maximum value of ambient temperature.  
周囲温度の上限は、取扱説明書のディレーティング表をご参照ください。

### Conditions

- (1) Input voltage AC85~264V 60Hz  
(2) Output voltage/  
current

DC OUTPUT	Load factor			
	100%	75%	50%	25%
12V	0.9A	0.7A	0.5A	0.2A
—	—	—	—	—
—	—	—	—	—

- (3) Cooling method Convection  
(4) Mounting method Refer below



Mounting method