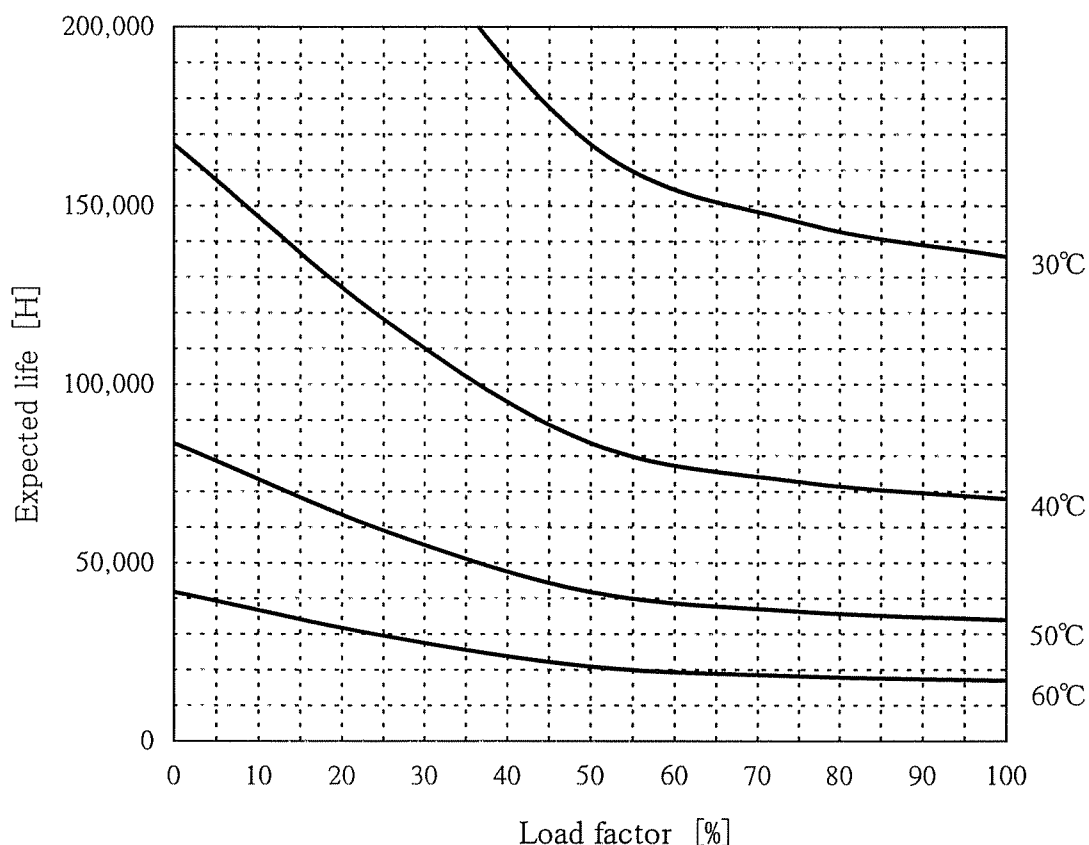


LDA100W-24 Expected Life : 推定寿命



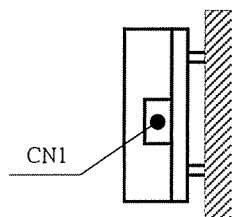
- Above expected life time is calculated according our calculation standard.
上記推定寿命は、当社算出基準に従い算出したものです。
- Over the area of 100,000 hours, the degradation of sealing rubber, etc., is not included in the calculation.
10万時間以上の領域では、封ロゴムの劣化等の影響は、計算式には含まれていません。
- Please refer derating curve shown in instruction manual about the maximum value of ambient temperature.
周囲温度の上限は、取扱説明書のデレーティング表をご参照ください。

Conditions

- (1) Input voltage AC85~264V 60Hz
(2) Output voltage/
current

DC OUTPUT	Load factor				
	100%	75%	50%	25%	0%
24V	4.3A	3.2A	2.1A	1.1A	0A
—	—	—	—	—	—
—	—	—	—	—	—

- (3) Cooling method Convection
(4) Mounting method Refer below



Mounting method(C)