

Date : Apr.26,2002

Temperature increase of main components: 主要部品温度上昇

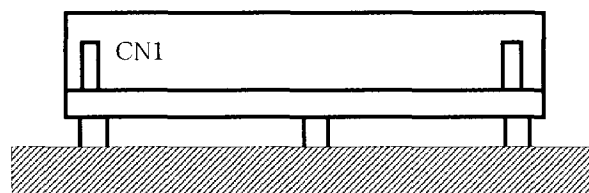
Model: LCC30A-3

1. Conditions

- (1) Input : AC 85~132V
- (2) Output : 100%
- (3) Mounting method : Shown as Fig.1.1

2. Result

No.	Parts name	Symbol No.	Increase (ΔT)			Rated temp. [°C]	Reference
			[deg]				
			AC85V	AC100V	AC132V		
1	Input Diode	SS11	69	62	56	150	Junction Temp.
2	Line Filter	L11	53	43	37	120	
3	Input Capacitor	C13	31	30	29	105	
4	Switching Transistor	TR12	53	49	47	150	Junction Temp.
5	Transformer	T11	54	52	50	130	
6	Rectified Diode(Output)(V1)	SS51	61	59	59	150	Junction Temp.
7	Rectified Diode(Output)(V2)	D71	52	51	50	150	Junction Temp.
8	Rectified Diode(Output)(V3)	D91	56	55	54	150	Junction Temp.
9	Output Choke	L51	34	33	33	120	
10	Output Capacitor (V1)	C51	31	32	31	105	
11	Output Capacitor (V1)	C52	34	36	35	105	
12	Output Capacitor (V2)	C72	35	36	36	105	
13	Output Capacitor (V3)	C91	35	36	36	105	
14	Voltage Regulator(V2)	IC71	67	66	64	150	Junction Temp.
15	Voltage Regulator(V3)	IC91	64	63	63	150	Junction Temp.
16							
17							
18							
19							
20							



(Side view)

Fig.1.1 Mounting method
(Normal position)