

Date : Apr.10,2024

Temperature increase of main components: 主要部品温度上昇

Model: GHA700F (Convection)

1. Conditions

- (1) Input :AC 85 ~ 264 [V]
- (2) Output :Rated output
- (3) Mounting method :As shown in Fig.1.1

2. Result

No.	Parts name	Symbol No.	Increase (ΔT)						Rated temp. [°C]	Reference
			[deg]							
			24V	30V	48V	56V				
1	Line Filter	L101	65	70	69	68			130	
2	Rectifier(Input)	SS101	78	80	74	79			150	Junction Temp.
3	Choke Coil(PFC)	L102	78	78	79	76			130	
4	Transistor(PFC)	TR101	83	79	81	83			150	Junction Temp.
5	Diode(PFC)	D101	77	76	78	79			175	Junction Temp.
6	Input Capacitor	C117	52	51	50	51			105	
7	Transformer	T201	64	63	64	64			130	
8	Switching Transistor(DCDC)	TR201	73	76	78	78			150	Junction Temp.
9	Switching Transistor(DCDC)	TR211	69	72	70	73			150	Junction Temp.
10	Rectifying Transistor(Output)	TR511	59	61	59	66			150	Junction Temp.
11	Output Choke	L501	47	49	44	51			150	
12	Output Capacitor	C522	39	41	36	40			125	
13	Output Capacitor	C523	35	38	35	40			125	
14										
15										
16										
17										
18										
19										
20										

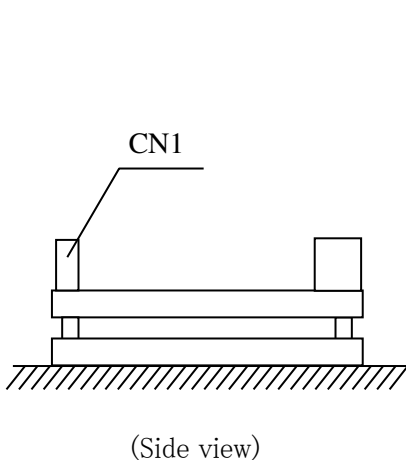


Fig.1.1 Mounting method
(Standard position)

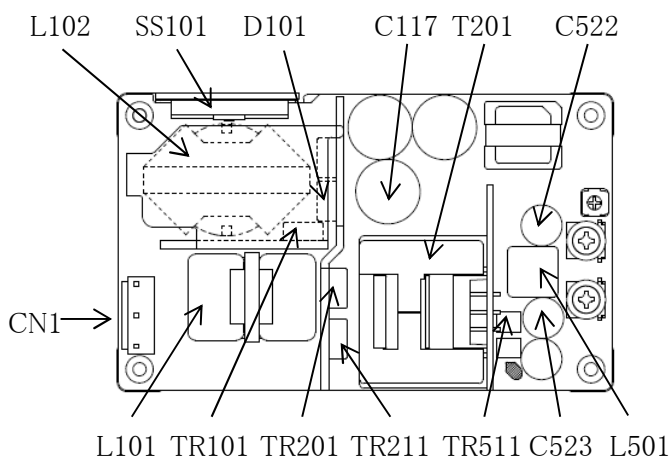


Fig.1.2 Location of Parts for Temperature measurement
(except 12V)
(arrows do not indicate the test points)

Date : Apr.10,2024

Temperature increase of main components: 主要部品温度上昇

Model: GHA700F (Convection)

1. Conditions

- (1) Input :AC 85 ~ 264 [V]
- (2) Output :Rated output
- (3) Mounting method :As shown in Fig.1.3

2. Result

No.	Parts name	Symbol No.	Increase (ΔT)						Rated temp. [°C]	Reference
			[deg]							
			12V							
1	Line Filter	L101	72						130	
2	Rectifier(Input)	SS101	83						150	Junction Temp.
3	Choke Coil(PFC)	L102	85						130	
4	Transistor(PFC)	TR101	83						150	Junction Temp.
5	Diode(PFC)	D101	81						175	Junction Temp.
6	Input Capacitor	C117	56						105	
7	Transformer	T201	89						155	
8	Switching Transistor(DCDC)	TR201	80						150	Junction Temp.
9	Switching Transistor(DCDC)	TR211	80						150	Junction Temp.
10	Rectifying Transistor(Output)	TR511	82						150	Junction Temp.
11	Output Choke	L501	68						150	
12	Output Capacitor	C522	46						105	
13	Output Capacitor	C523	55						125	
14										
15										
16										
17										
18										
19										
20										

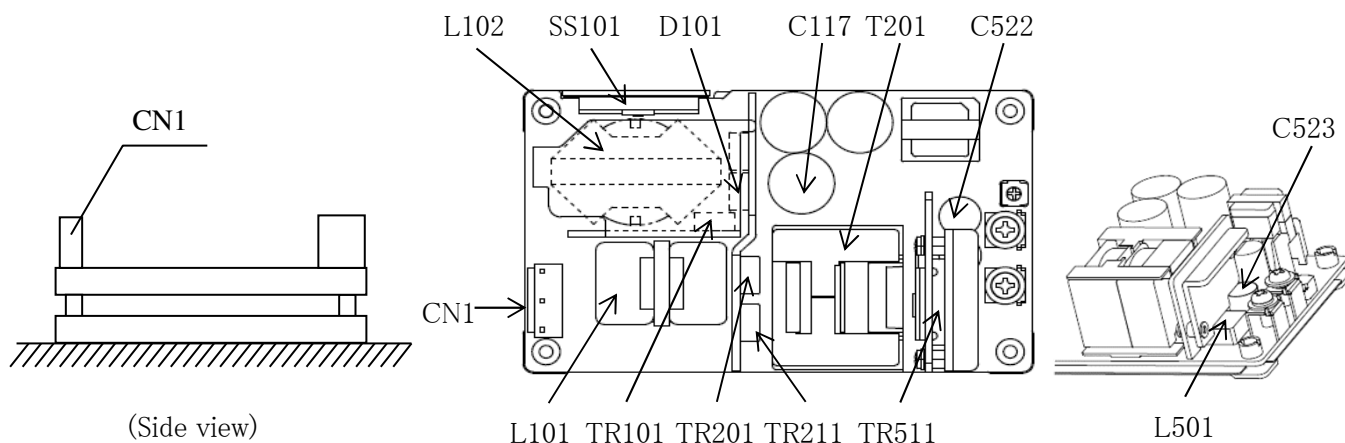


Fig.1.3 Mounting method
(Standard position)

Fig.1.4 Location of Parts for Temperature measurement
(only 12V)
(arrows do not indicate the test points)