





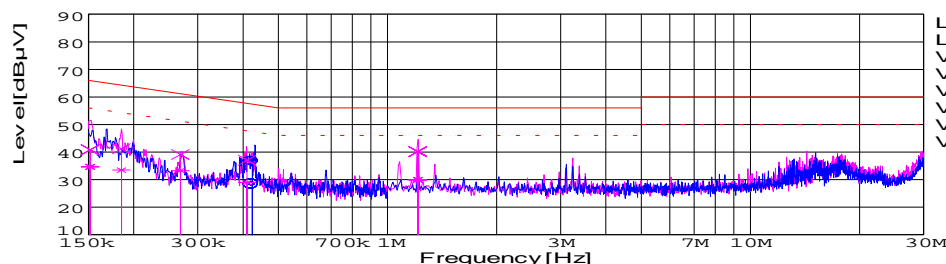


Date	10-Jun-05
Temp.	25 degreeC
Humid.	40 %RH
Tested by	T.Mizuhara

Model Name	:	DPF1000
Model No.	:	
Serial No.	:	
Points	:	6
Detector	:	PEAK/QP/Ave.
Line Mode	:	VA/VB
Power Supply	:	AC 230V 50Hz
Temp.	:	25
Humi.	:	40
Limit1:	[EN 55022]	Class B(QP)
Limit2:	[EN 55022]	Class B(Ave.)

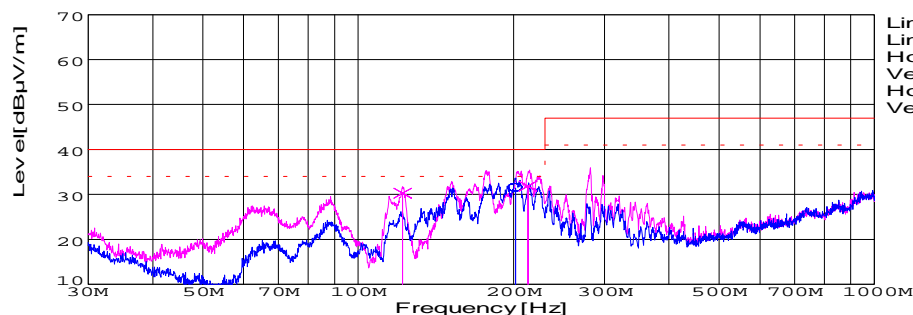
Limit1(QP)	
Limit2(Ave.)	
VA(PEAK)	
VB(PEAK)	
VA(QP)	
VA(Ave.)	
VB(QP)	
VB(Ave.)	



Frequency [MHz]	Meter Reading (Ave.)[dBuV]	Meter Reading (QP)[dBuV]	Factor [dB]	Level(Ave.) [dBuV]	Level(QP) [dBuV]	Line	Limit(Ave.) [dBuV]	Limit(QP) [dBuV]	Margin(Ave.) [dB]	Margin(QP) [dB]
0.4243	18.4	26.8	9.9	28.3	36.7	VA	47.4	57.4	19.1	20.7
0.2688	23.4	29.3	9.8	33.2	39.1	VB	51.2	61.2	18	22.1
0.4105	19	27.1	9.9	28.9	37	VB	47.6	57.6	18.7	20.6
1.2117	20	30.3	9.9	29.9	40.2	VB	46	56	16.1	15.8

Model Name : DPF1000
Model No. :
Serial No. :
Points : 3
Detector : PEAK/QP
Polarization : Hori. & Vert.
Power Supply : AC 230V 50Hz
Limit: [EN 55022] Class B<3m>

Limit(QP)	—
Limit(QP)(-6dB)	- - -
Horizontal(PEAK)	—
Vertical(PEAK)	—
Horizontal(QP)	○
Vertical(QP)	×



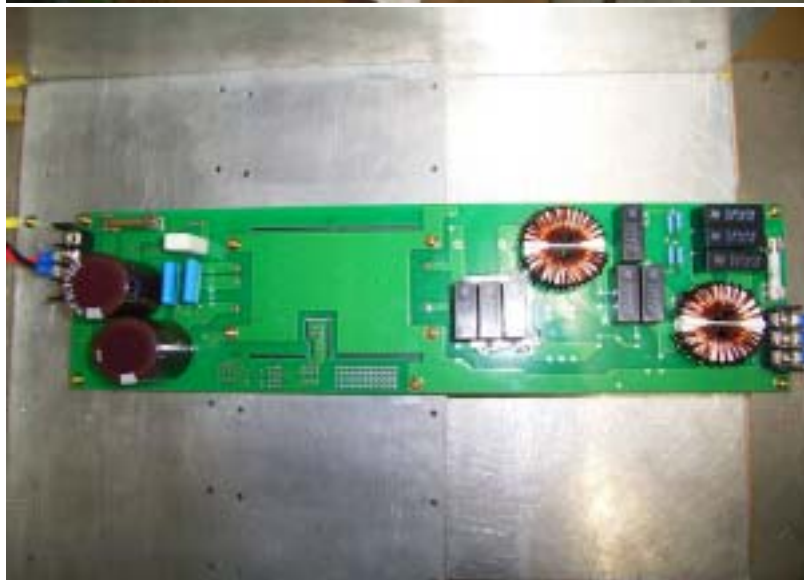
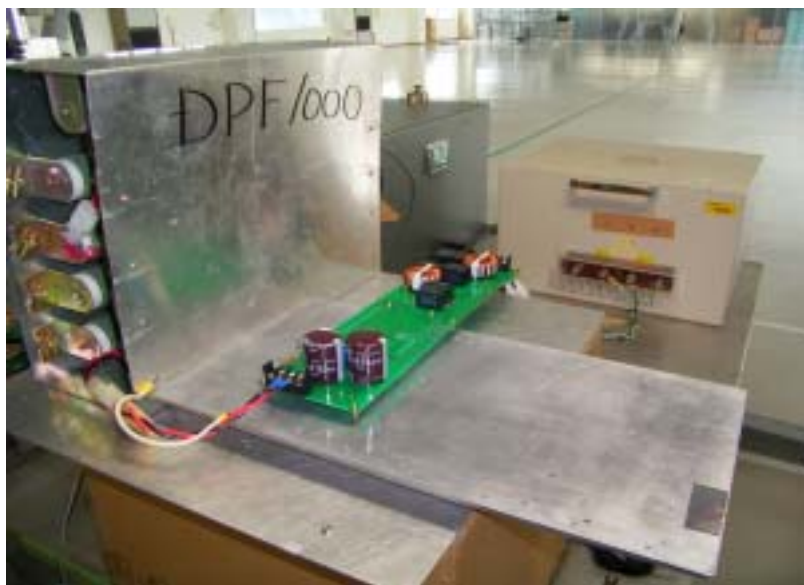
Frequency [MHz]	MeterReading (QP)[dBuV]	Ant. Type	Antenna Factor[dB/m]	Cable & Preamp[dB]	Level(QP) [dBuV/m]	Angle [°]	Height[cm]	Polar.	Limit [dBuV/m]	Margin [dB]
201.699	54.2	BL	8.5	-31.3	31.4	223	102	Hori.	40	8.6
121.876	51	BL	11	-31.7	30.3	270	138	Vert.	40	9.7
213.225	54.3	BL	8.8	-31.3	31.8	358	124	Vert.	40	8.2

Conditions

Date 2005/6/10

Test : LINE CONDUCTION
Model Name : DPF1000

===Photographs of Test Set-Up===



===Testing circuitry===

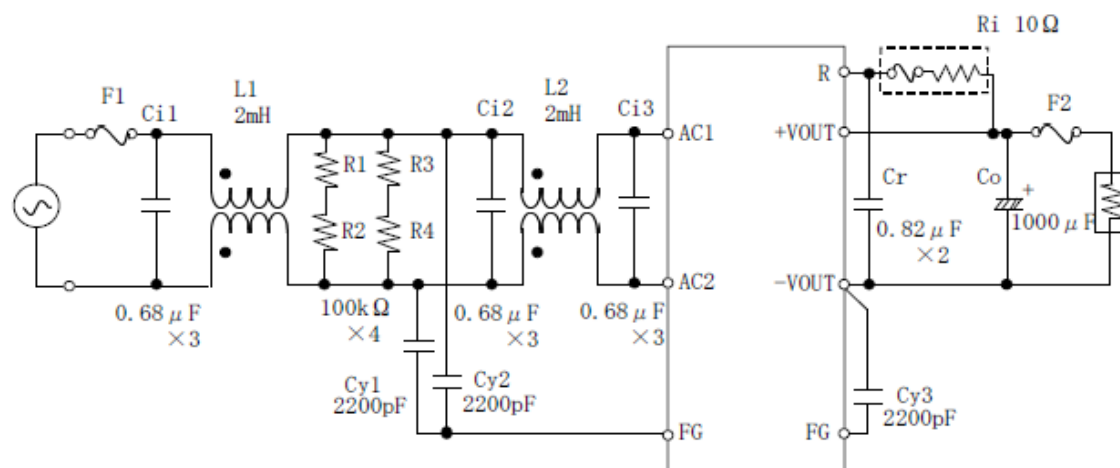


Fig. Testing circuitry

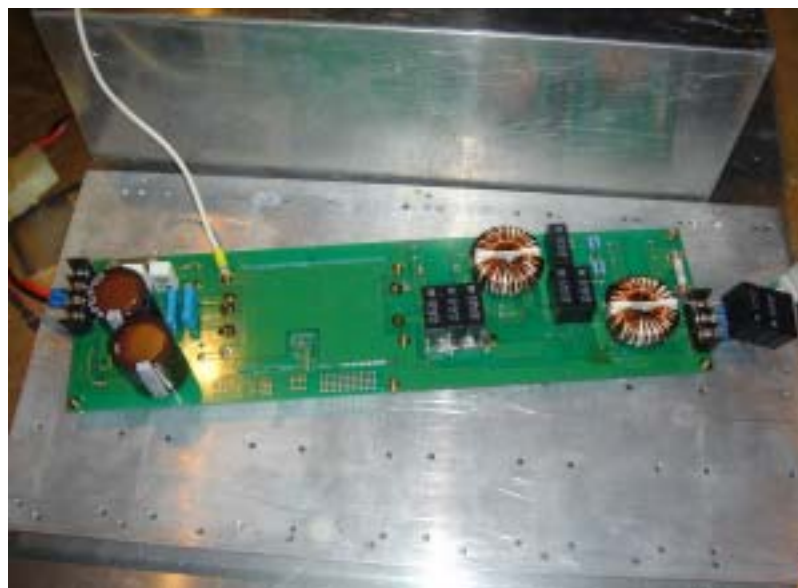
L1, L2 : SC-15-200 (TOKIN)

Conditions

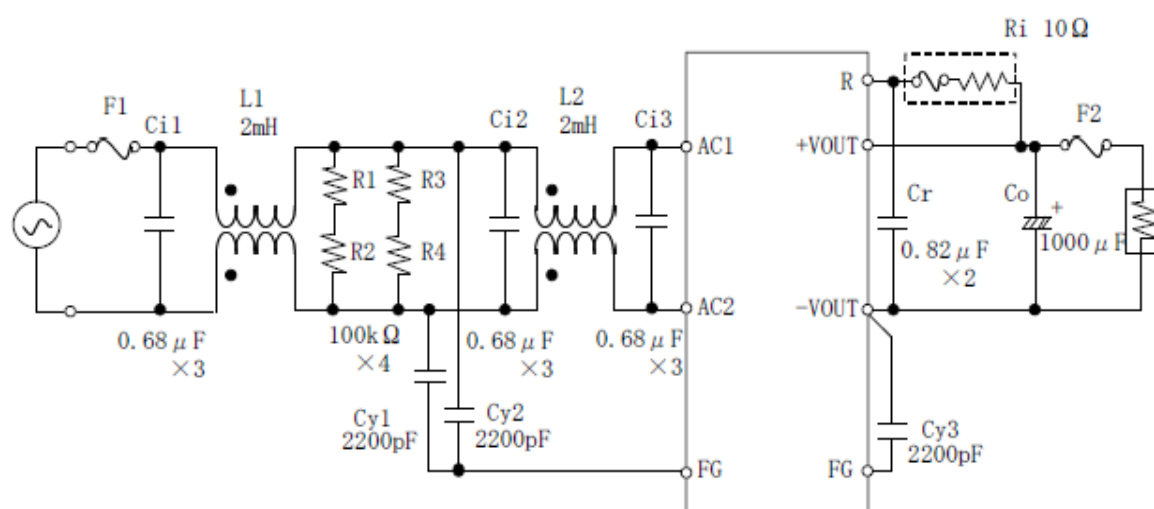
Date 2005/7/26

Test : RADIATED EMISSION
Model Name : DPF1000

===Photographs of Test Set-Up===



===Testing circuitry===



L1,L2 : SC-15-200 (TOKIN)

Fig. Testing circuitry