

DATA SHEET

Model	Circuit used for measurement
Test	EMI Line conduction & Radiated emission

1. Line conduction



2. Radiated emission

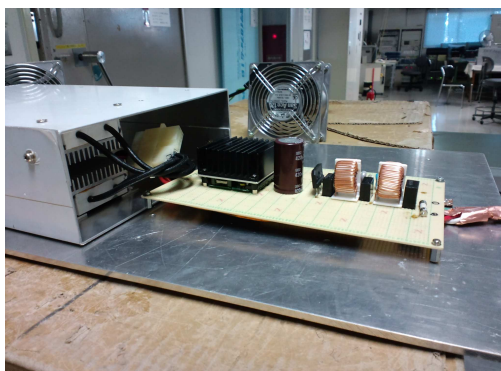


Test: EMI

Model Name:DHS250B Series

○ Photographs of Test Set-Up

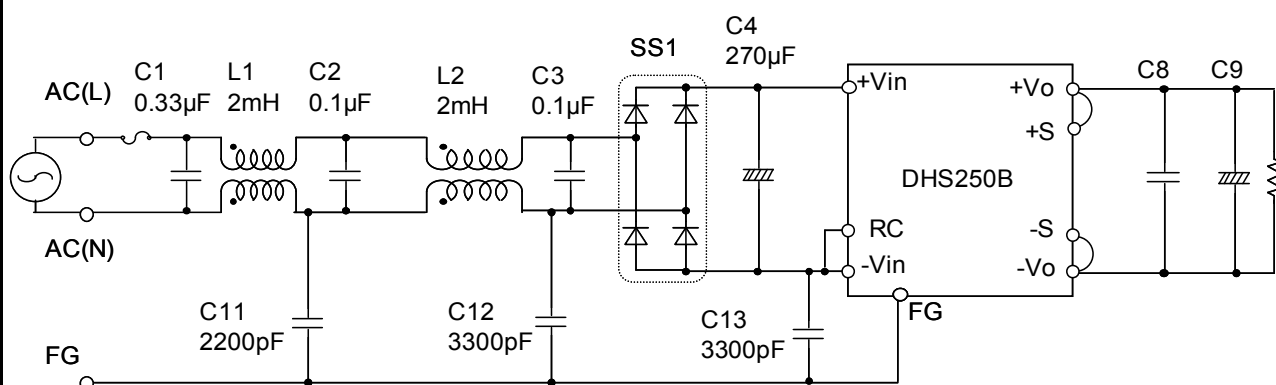
LINE CONDUCTION



RADIATED EMISSION



○ Test circuit



L1,L2 : SC-05-200(NEC TOKIN)

SS1 : D10XB60(SINDENGEN)

C8 : DHS250B03 10μF
 DHS250B05 10μF
 DHS250B07 10μF
 DHS250B12 10μF
 DHS250B15 10μF
 DHS250B24 4.7μF
 DHS250B28 4.7μF
 DHS250B48 2.2μF

C9 : DHS250B03 2200μF
 DHS250B05 2200μF
 DHS250B07 2200μF
 DHS250B12 1000μF
 DHS250B15 1000μF
 DHS250B24 470μF
 DHS250B28 470μF
 DHS250B48 330μF