

DATA SHEET							Date	16-Oct-09
Model	DHS250B15						Temp.	25 degreeC
Test	EMI Line conduction & Radiated emission						Humid.	45 %RH
							Tested by	D.TSUCHIDA

LINE CONDUCTION

Model Name : DHS250B15
Model No. :
Serial No. :
Points : 4
Detector : PEAK/QP/Ave.
Line Mode : VA/VB
Power Supply : 230V(1 Phase) 50Hz
Limit1: [EN 55011] Class A Gr. 1 (QP)
Limit2: [EN 55011] Class A Gr. 1 (Ave.)

Temp. : 25°C
Humi. : 45%
Date : 2009/10/16 15:24
Test Equip. : R3132, ESPC
Load Line : 100mm
Comment : D. TSUCHIDA

Level [dBuV]

150k200k300k500k700k1M2M3M5M7M10M20M30M

Frequency [Hz]

Limit1 (QP)

Limit2 (Ave.)

VA (PEAK)

VB (PEAK)

VA (QP)

VA (Ave.)

VB (QP)

VB (Ave.)

230V(1 Phase) 50Hz

Frequency [MHz]	Meter Reading (Ave.) [dBuV]	Meter Reading (QP) [dBuV]	Factor [dB]	Level(Ave.) [dBuV]	Level(QP) [dBuV]	Line	Limit(Ave.) [dBuV]	Limit(QP) [dBuV]	Margin(Ave.) [dB]	Margin(QP) [dB]
0.161	25.1	41.3	9.8	34.9	51.1	VA	66	79	31.1	27.9
28.2508	26.5	37.3	10.4	36.9	47.7	VA	60	73	23.1	25.3
0.1762	25.8	45.5	9.8	35.6	55.3	VB	66	79	30.4	23.7
29.8862	17.2	23.7	10.5	27.7	34.2	VB	60	73	32.3	38.8

RADIATED EMISSION

Model Name : DHS250B15
Model No. :
Serial No. :
Points : 2
Detector : PEAK/QP
Polarization : Hori. & Vert.
Power Supply : AC230V 50Hz
Limit: [EN 55011] Class A Group 1<3m>

Temp. : 25°C
Humi. : 45%
Date : 2009/10/16 14:05
Test Equip. : R3132, ESPC
Load Line : 100mm
Comment : D. TSUCHIDA

Level [dBuV/m]

30M50M70M100M200M300M500M700M1000M

Frequency [Hz]

Limit (QP)

Horizontal (PEAK)

Vertical (PEAK)

Horizontal (QP)

Vertical (QP)

AC 230V 50Hz

Frequency [MHz]	Meter Reading (QP) [dBuV]	Ant. Type	Antenna Factor [dB/m]	Cable & Preamp [dB]	Level(QP) [dBuV/m]	Angle [°]	Height [cm]	Polar.	Limit [dBuV/m]	Margin [dB]
87.947	52.5	BL	8.3	-26.5	34.3	196	153	Hori.	50	15.7
48.686	51.9	BL	8.4	-25	35.3	264	103	Vert.	50	14.7

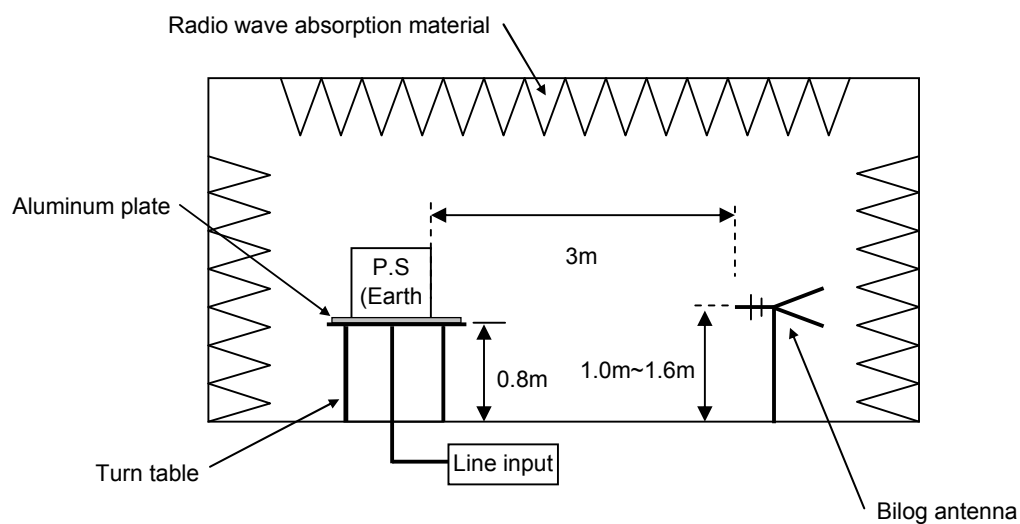
DATA SHEET

Model	Circuit used for measurement
Test	EMI Line conduction & Radiated emission

1. Line conduction



2. Radiated emission

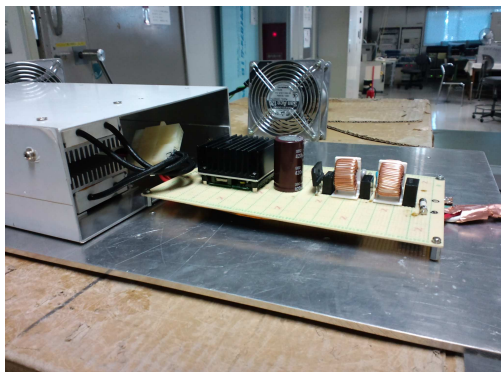


Test: EMI

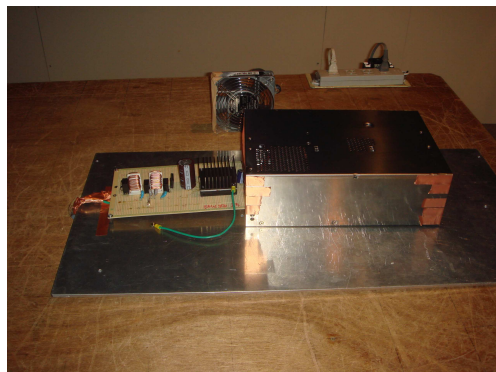
Model Name:DHS250B Series

○ Photographs of Test Set-Up

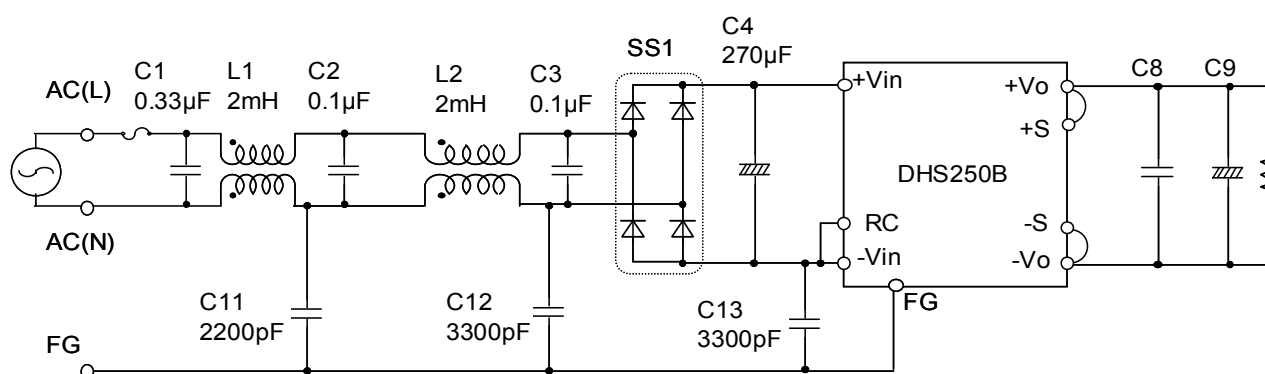
LINE CONDUCTION



RADIATED EMISSION



○ Test circuit



L1,L2 : SC-05-200(NEC TOKIN)

SS1 : D10XB60(SINDENGEN)

C8 : DHS250B03 10μF
 DHS250B05 10μF
 DHS250B07 10μF
 DHS250B12 10μF
 DHS250B15 10μF
 DHS250B24 4.7μF
 DHS250B28 4.7μF
 DHS250B48 2.2μF

C9 : DHS250B03 2200μF
 DHS250B05 2200μF
 DHS250B07 2200μF
 DHS250B12 1000μF
 DHS250B15 1000μF
 DHS250B24 470μF
 DHS250B28 470μF
 DHS250B48 330μF