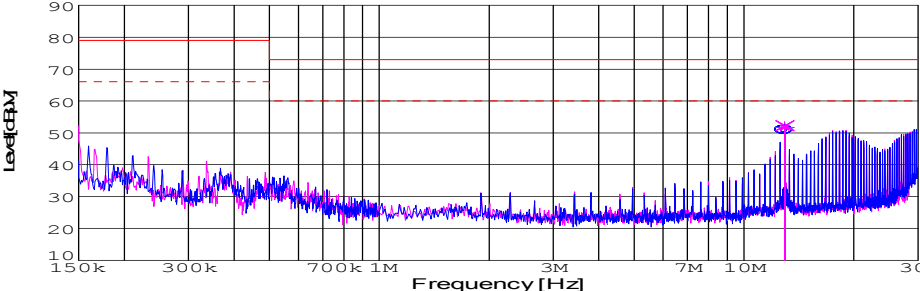
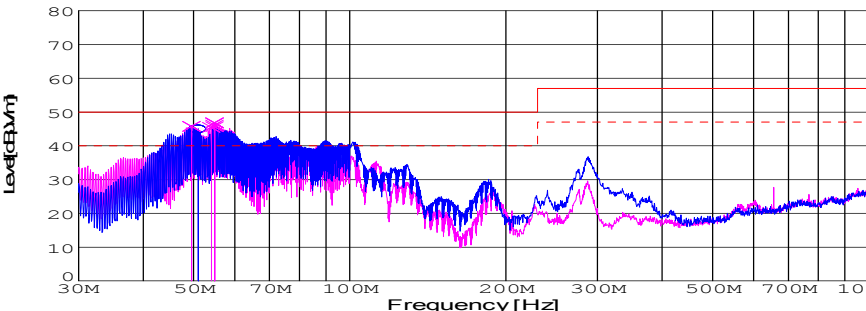


DATA SHEET							Date	16-Jun-08		
Model	DBS700B24						Temp.	25 degreeC		
Test	EMI Line conduction & Radiated emission						Humid.	44 %RH		
							Tested by	E.Nagata		
LINE CONDUCTION										
Model Name : DBS700B24			Temp. : 25			:				
Model No. :			Humi. : 44			:				
Serial No. :			Date : 2008/6/14 11:05			:				
Points : 1			Test Equip. : R3132,ESPC			:				
Detector : PEAK/QP/Ave.			Load Line : 100mm			:				
Line Mode : VA/VB			Comment : E.Nagata			:				
Power Supply : AC230V 50Hz										
Limit1: [EN 55022] Class A(QP)										
Limit2: [EN 55022] Class A(Ave.)										
							Limit1(QP) ——— Limit2(Ave.) - - - VA(PEAK) ——— VB(PEAK) ——— VA(QP) ○ VA(Ave.) ● VB(QP) × VB(Ave.) *			
							AC230V 50Hz 24V29A			
Frequency [MHz]	Meter Reading (Ave.) [dBuV]	Meter Reading (QP) [dBuV]	Factor [dB]	Level(Ave.) [dBuV]	Level(QP) [dBuV]	Line	Limit(Ave.) [dBuV]	Limit(QP) [dBuV]	Margin(Ave.) [dB]	Margin(QP) [dB]
12.9541	40.6	40.8	10.2	50.8	51	VA	60	73	9.2	22
12.9534	41.5	42	10.2	51.7	52.2	VB	60	73	8.3	20.8

RADIATED EMISSION										
Model Name : DBS700B24			Temp. : 25			:				
Model No. :			Humi. : 44			:				
Serial No. :			Date : 2008/6/16 15:21			:				
Points : 6			Test Equip. : R3132,ESPC			:				
Detector : PEAK/QP			Load Line : 100mm			:				
Polarization : Hori. & Vert.			Comment : E.Nagata			:				
Power Supply : AC230V 50Hz										
Limit: [EN 55022] Class A<3m>										
							Limit(QP) ——— Limit(QP)(-10dB) - - - Horizontal(PEAK) ——— Vertical(PEAK) ——— Horizontal(QP) ○ Vertical(QP) ×			
							AC230V 50Hz 24V29A			
Frequency [MHz]	MeterReading (QP)[dBuV]	Ant. Type	Antenna Factor[dB/m]	Cable & Preamp[dB]	Level(QP) [dBuV/m]	Angle [°]	Height[cm]	Polar.	Limit [dBuV/m]	Margin [dB]
51.052	69.8	BL	7.3	-32.1	45	323	139	Hori.	50	5
54.855	71.9	BL	5.8	-32.1	45.6	101	120	Vert.	50	4.4
54.855	73.1	BL	5.8	-32.1	46.8	84	124	Vert.	50	3.2
54.851	72.5	BL	5.8	-32.1	46.2	76	114	Vert.	50	3.8
54.093	71.6	BL	6	-32.1	45.5	54	122	Vert.	50	4.5
49.525	70	BL	7.9	-32.1	45.8	284	100	Vert.	50	4.2

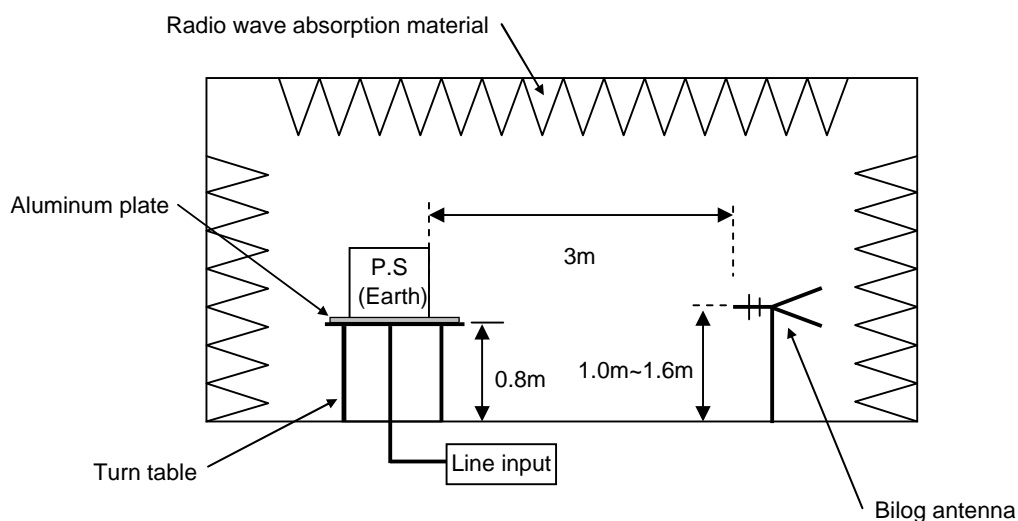
## DATA SHEET

Model	Circuit used for measurement
Test	EMI Line conduction & Radiated emission

### 1. Line conduction



### 2. Radiated emission



Test: EMI

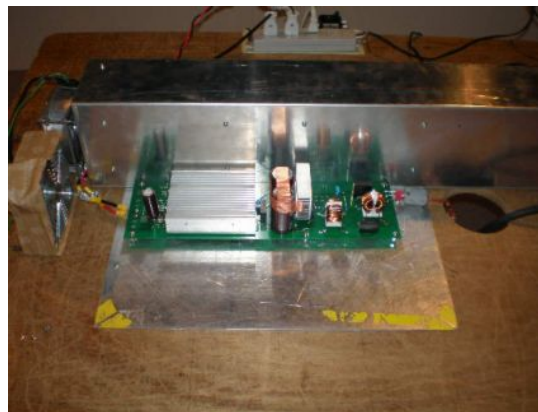
Model Name: DBS700B Series

## ○ Photographs of Test Set-Up

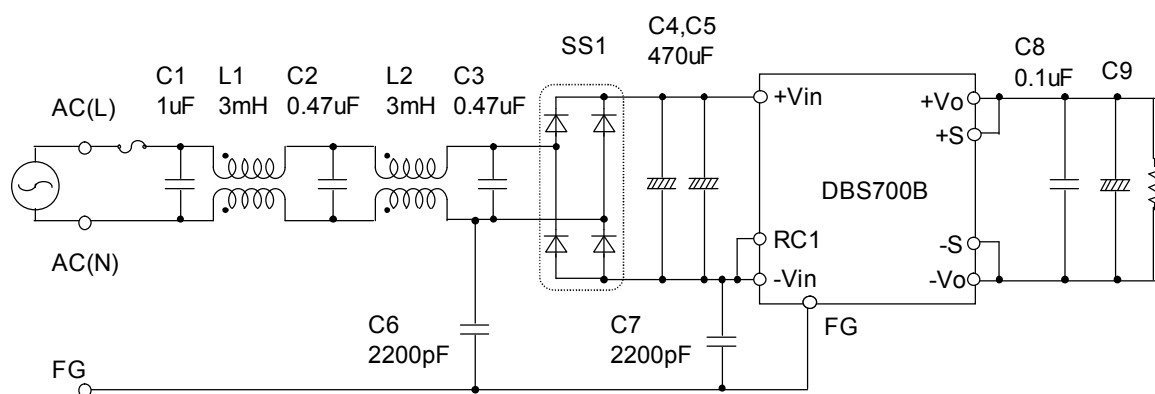
### LINE CONDUCTION



### RADIATED EMISSION



## ○ Test circuit



L1,L2 : SC-10-30 (NEC TOKIN)  
 SS1 : D25XB60(SINDENGEN)  
 C9 : DBS700B24 50V2200uF  
       DBS700B28 50V2200uF  
       DBS700B36 50V2200uF  
       DBS700B48 80V1000uF