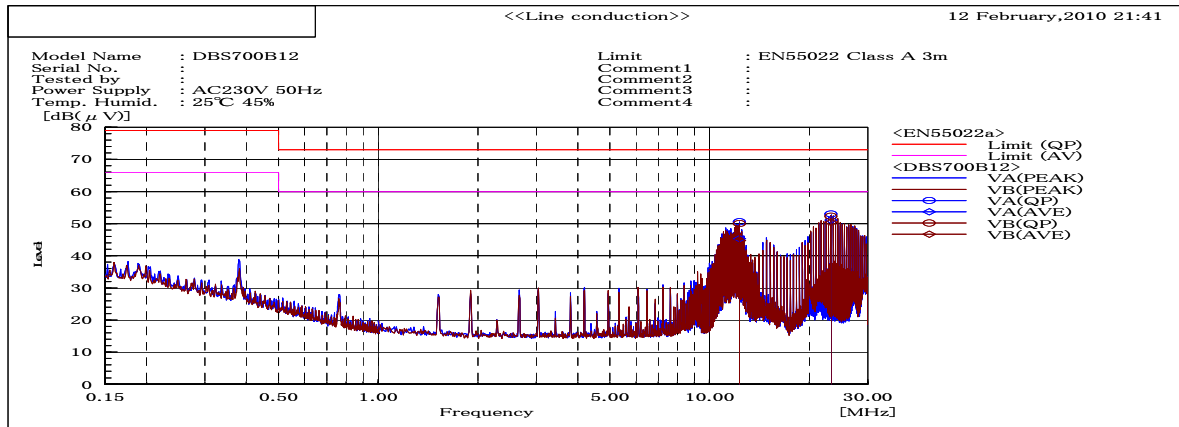
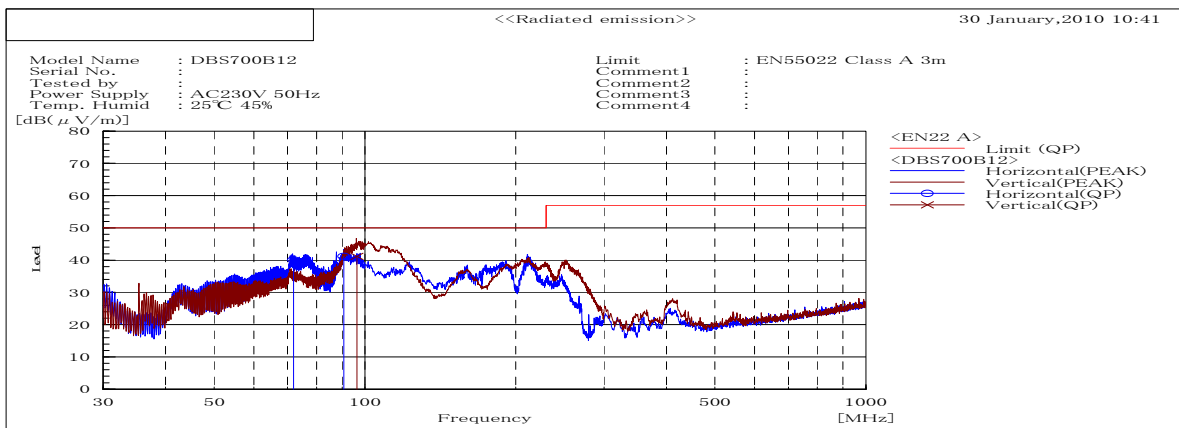


DATA SHEET		Date	12-Feb-10
Model	DBS700B12	Temp.	25 degreeC
Test	EMI Line conduction & Radiated emission	Humid.	45 %RH
		Tested by	S.SAWADA



Frequency MHz	Harm	Line Phase	Reading dB(μV)	Factor dB	Level dB(μV)	Limit dB(μV)	Margin dB	Pass/ Fail	Remark
12.2927		VA	39.4	10.6	50			Pass	
12.2927		VB	38.9	10.7	49.6			Pass	
23.232		VB	41.7	11	52.7			Pass	
23.232		VA	41.5	10.8	52.3			Pass	



Frequency MHz	Harm	Polarization	Reading dB(μV)	Space Loss dB	Level dB(mW)	Limit	Limit	Limit	Margin dB	Margin dB	Margin dB	Pass/ Fail	Height cm	Angle deg	Remark
						QP	AV	PK							
71.65		H	67.1	-25.2	41.9	50			8.1			Pass	100	21	
90.69		H	66.3	-22.9	43.4	50			6.6			Pass	100	224	
96.08		V	68.9	-22.2	46.7	50			3.3			Pass	100	87	

## DATA SHEET

Model	Circuit used for measurement
Test	EMI Line conduction & Radiated emission

### 1. Line conduction



### 2. Radiated emission



Test: EMI

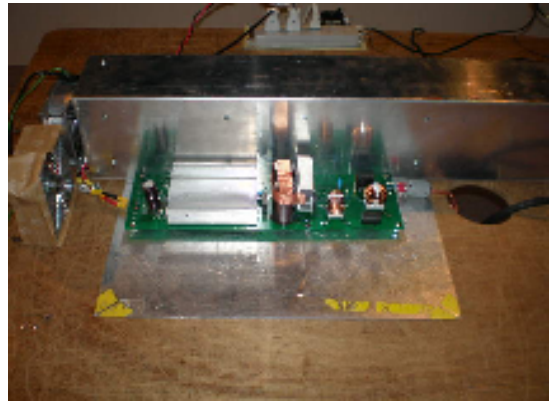
Model Name: DBS700B Series

○ Photographs of Test Set-Up

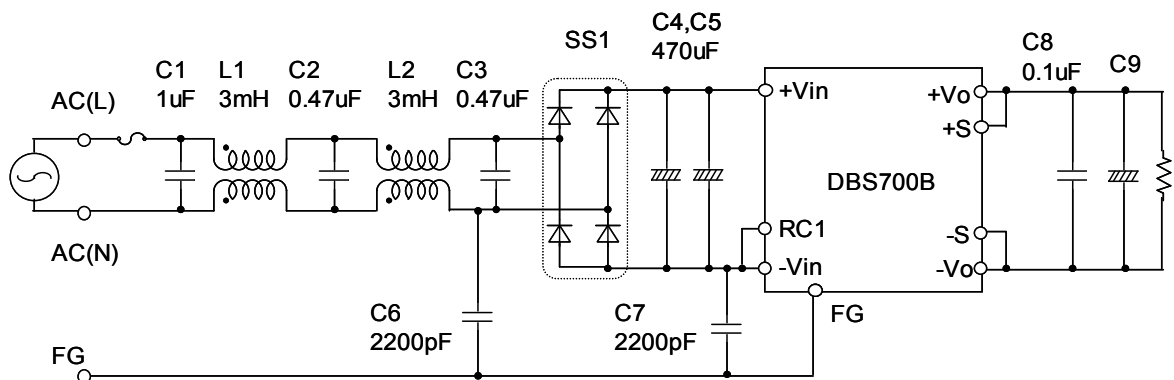
LINE CONDUCTION



RADIATED EMISSION



○ Test circuit



L1,L2 : SC-10-30 (NEC TOKIN)  
 SS1 : D25XB60(SINDENGEN)  
 C9 : DBS700B12 25V2200uF  
       DBS700B24 50V2200uF  
       DBS700B28 50V2200uF  
       DBS700B36 50V2200uF  
       DBS700B48 80V1000uF