



# RADIATED EMISSION

Model Name : DBS400B28

Model No. :

Serial No. :

Detector : PEAK/QP

Points : 6

Polarization : Hori. & Vert.

Limit1: [EN 55022] Class B<3m>

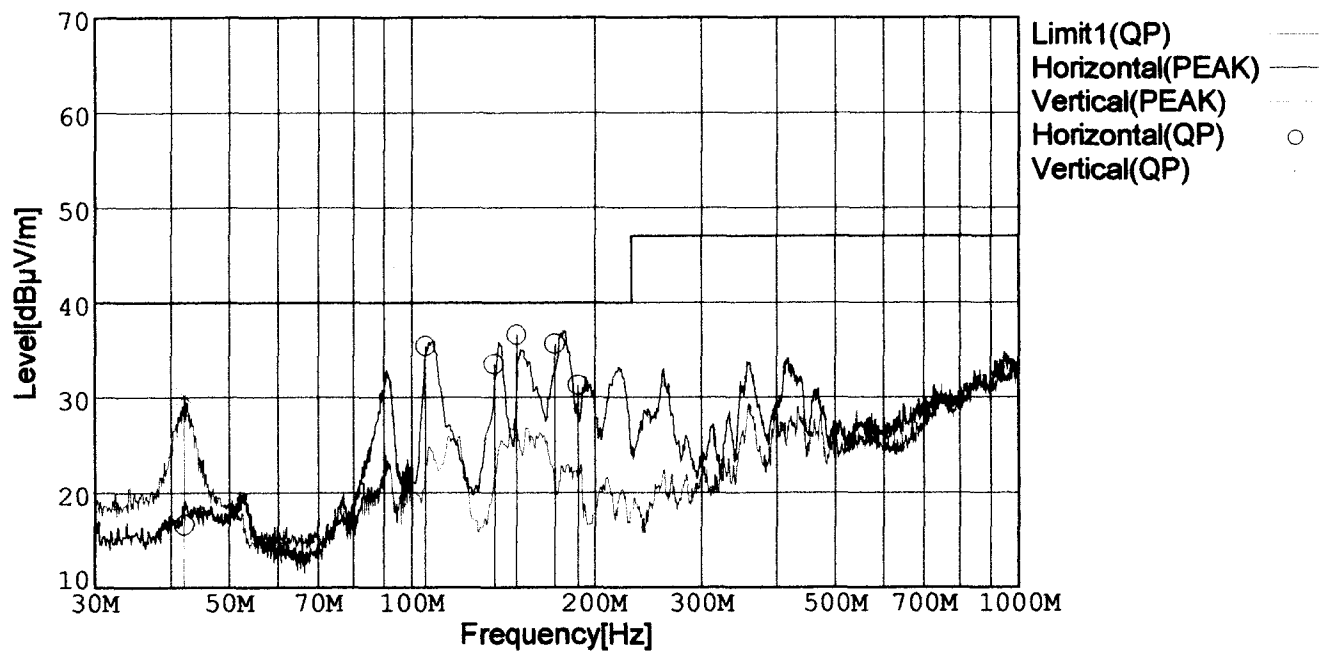
Temperature : 25deg C

Humidity : 45%

Comment : Vin=Ac230V,Io=100%

Date : 2000/7/19 18:50

EMI Receiver(s) : R3261A,ESPC



Frequency [MHz]	Meter Reading [dBμV]	Antenna Factor [dB]	Cable Loss [dB]	Level [dBμV/m]	Angle [°]	Height [cm]	Pola.	Limit [dBμV/m]	Margin [dB]
105.024	49.7	-28.2	13.9	35.4	137	156	Hori.	40.0	4.6
136.606	47.2	-27.9	14.3	33.6	314	144	Hori.	40.0	6.4
148.745	50.6	-27.8	13.8	36.6	185	156	Hori.	40.0	3.4
172.386	50.6	-27.7	12.8	35.7	50	156	Hori.	40.0	4.3
187.723	46.4	-27.5	12.4	31.3	40	153	Hori.	40.0	8.7
42.054	44.1	-28.7	14.8	30.2	5	100	Vert.	40.0	9.8

## Conditions

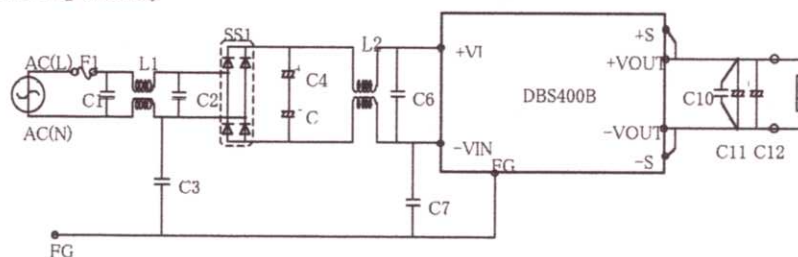
Date 2000/8/11

Test : RADIATED EMISSION  
Model Name : DBS400B

## ○Photographs of Test Set-Up



## ○Testing circuitry



- F1 : CES15 (SOC:15A 250V)  
 C1、C2 : CFJC22E474M (NITSUKO:0.47  $\mu$ F 250V)  
 C6 : CFJC22E224M (NITSUKO:0.22  $\mu$ F 250V)  
 C4、C5 : LGQ2E102M (NICHICON:1000  $\mu$ F 250V)  
 C3、C7 : DE1207-2E332M-KH (MURATA:3300pF 250V)  
 L1 : SC-05-20J (TOKIN:2.0mH min 5.0A)  
 L2 : SS28H-25045 (TOKIN:4.5mH min 2.5A)  
 SS1 : D25XB60 (SINDENGEN:25A 600V)  
 C10 : MDD21H104M5 (NITSUKO:0.1  $\mu$ F 50V)  
 C11、C12 : Table 1 (NIPPON CHEMI-CON)

Table 1

MODEL	C11	C12
DBS400B03	LZX10VB3300MK25	LZX10VB3300MK25
DBS400B05, 07	LZX10VB2200MK20	LZX10VB2200MK20
DBS400B12	LZX25VB1000MK20	LZX25VB1000MK20
DBS400B15, 18	LZX35VB1000MK25	LZX35VB1000MK25
DBS400B24, 28	LZY50VB820MK40	-

Fig 1. Testing circuitry



# LINE CONDUCTION

Model Name : DBS400B28

Model No. :

Serial No. :

Detector : PEAK/QP/Ave.

Points : 5

Line Mode : VA/VB

Limit1: [EN 55022] Class B(QP)

Limit2: [EN 55022] Class B(Ave.)

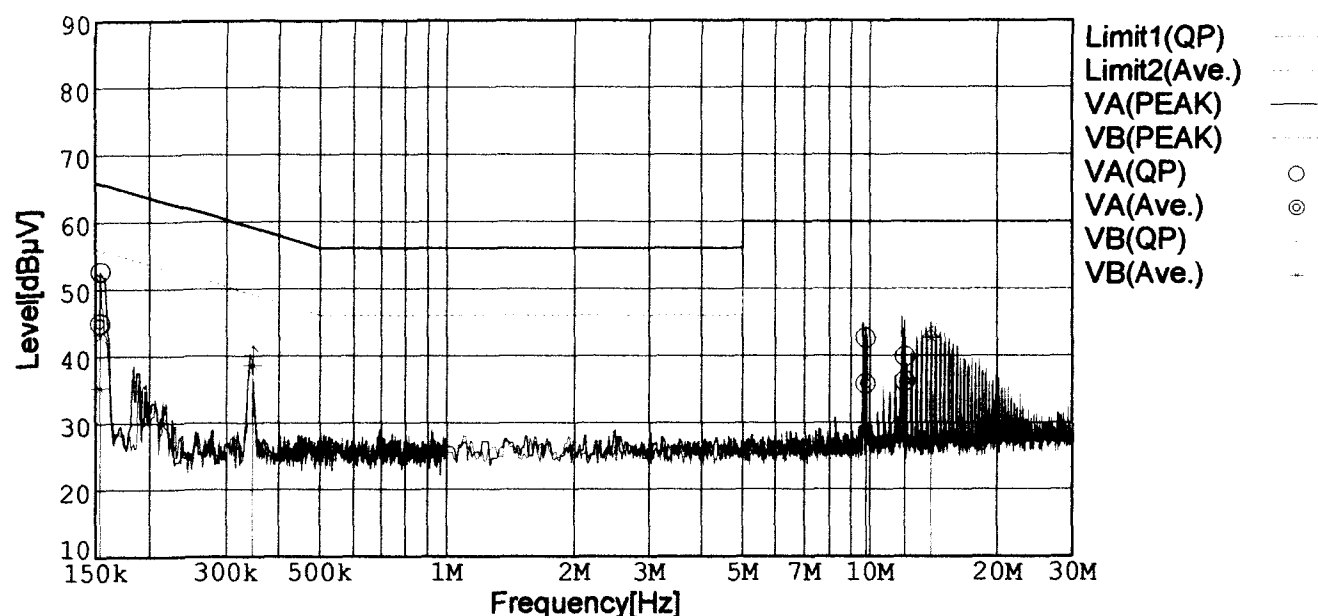
Temperature : 25deg C

Humidity : 45%

Comment : Vin=AC230V, Io=100%

Date : 2000/7/19 19:46

EMI Receiver(s) : R3261A,ESPC



Frequency [MHz]	Meter Reading (QP) [dBμV]	Meter Reading (Ave.) [dBμV]	Factor [dB]	Level (QP) [dBμV]	Level (Ave.) [dBμV]	Line	Limit (QP) [dBμV]	Limit (Ave.) [dBμV]	Margin (QP)[dB]	Margin (Ave.) [dB]
0.1535	42.3	34.6	10.3	52.6	44.9	VA	65.8	55.8	13.2	10.9
9.7511	32.2	25.3	10.4	42.6	35.7	VA	60.0	50.0	17.4	14.3
12.0639	29.3	25.6	10.5	39.8	36.1	VA	60.0	50.0	20.2	13.9
0.3457	31.1	28.2	10.3	41.4	38.5	VB	59.1	49.1	17.7	10.6
13.8810	33.3	32.0	10.6	43.9	42.6	VB	60.0	50.0	16.1	7.4

# Conditions

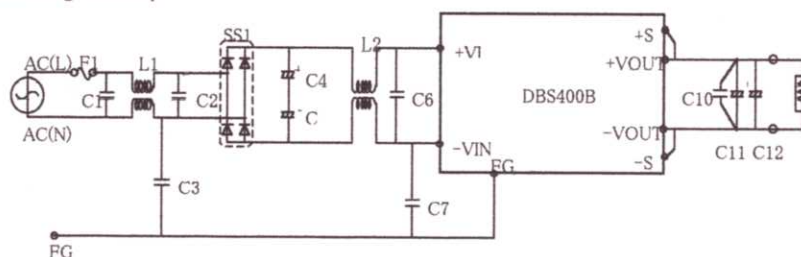
Date 2000/8/11

Test : LINE CONDUCTION  
Model Name : DBS400B

## Photographs of Test Set-Up



## Testing circuitry



- F1 : CES15 (SOC:15A 250V)  
C1、C2 : CFJC22E474M (NITSUKO:0.47  $\mu$ F 250V)  
C6 : CFJC22E224M (NITSUKO:0.22  $\mu$ F 250V)  
C4、C5 : LGQ2E102M (NICHICON:1000  $\mu$ F 250V)  
C3、C7 : DE1207-2E332M-KH (MURATA:3300pF 250V)  
L1 : SC-05-20J (TOKIN:2.0mH min 5.0A)  
L2 : SS28H-25045 (TOKIN:4.5mH min 2.5A)  
SS1 : D25XB60 (SINDENGEN:25A 600V)  
C10 : MDD21H104M5 (NITSUKO:0.1  $\mu$ F 50V)  
C11、C12 : Table 1(NIPPON CHEMI-CON)

Table 1

MODEL	C11	C12
DBS400B03	LZX10VB3300MK25	LZX10VB3300MK25
DBS400B05, 07	LZX10VB2200MK20	LZX10VB2200MK20
DBS400B12	LZX25VB1000MK20	LZX25VB1000MK20
DBS400B15, 18	LZX35VB1000MK25	LZX35VB1000MK25
DBS400B24, 28	LZY50VB820MK40	-

Fig 1. Testing circuitry