



RADIATED EMISSION

Model Name : DBS400B05

Model No. :

Serial No. :

Detector : PEAK/QP

Points : 4

Polarization : Hori. & Vert.

Limit1: [EN 55022] Class B<3m>

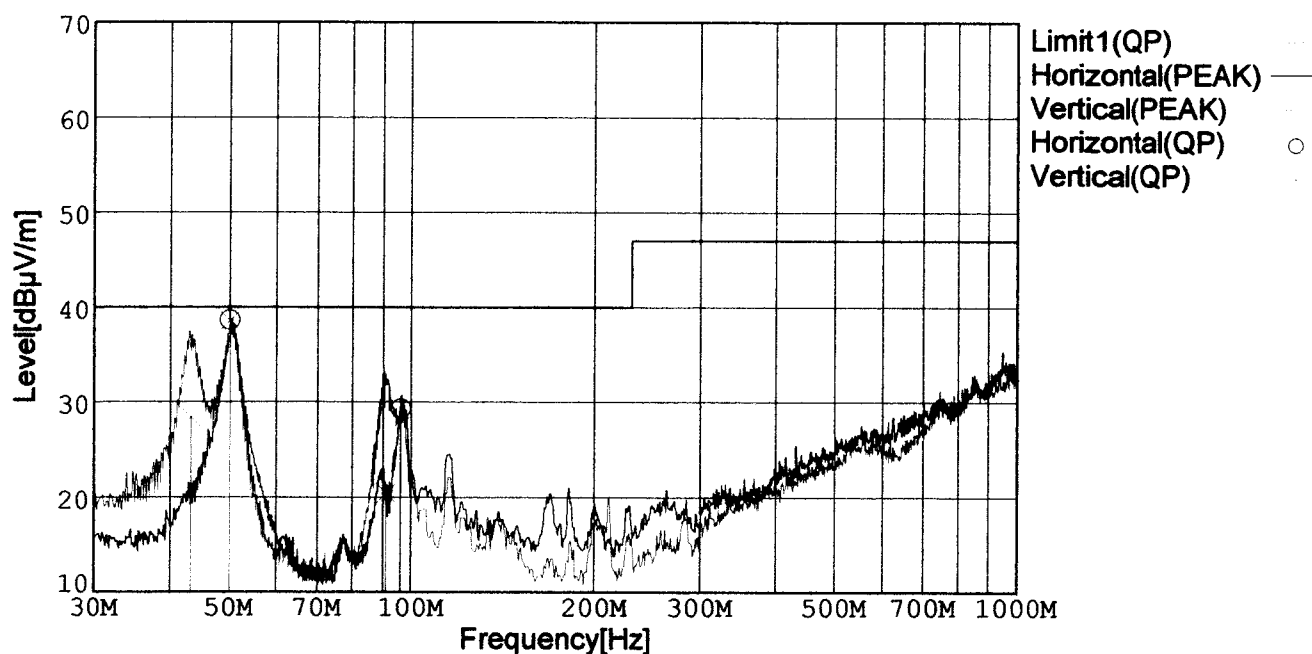
Temperature : 25deg C

Humidity : 45%

Comment : Vin=AC230V, Io=100%

Date : 2000/7/21 10:35

EMI Receiver(s) : R3261A,ESPC



Frequency [MHz]	Meter Reading [dBμV]	Antenna Factor[dB]	Cable Loss[dB]	Level [dBμV/m]	Angle[°]	Height [cm]	Pola.	Limit [dBμV/m]	Margin [dB]
49.970	56.9	-28.7	10.4	38.6	78	159	Hori.	40.0	1.4
95.992	43.9	-28.2	13.6	29.3	336	153	Hori.	40.0	10.7
49.970	55.0	-28.7	12.3	38.6	149	150	Vert.	40.0	1.4
43.291	42.7	-28.7	14.4	28.4	135	139	Vert.	40.0	11.6
90.946	36.5	-28.2	12.1	20.4	9	140	Vert.	40.0	19.6

Conditions

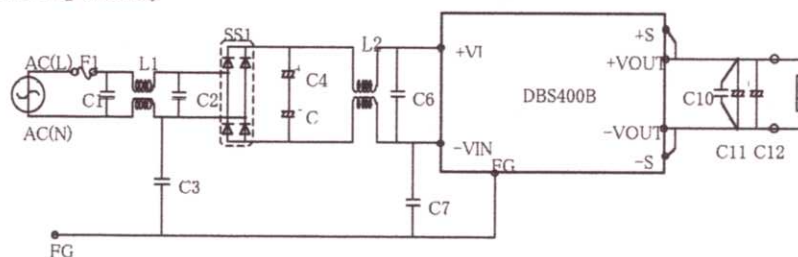
Date 2000/8/11

Test : RADIATED EMISSION
Model Name : DBS400B

○Photographs of Test Set-Up



○Testing circuitry



- F1 : CES15 (SOC:15A 250V)
- C1、C2 : CFJC22E474M (NITSUKO:0.47 μ F 250V)
- C6 : CFJC22E224M (NITSUKO:0.22 μ F 250V)
- C4、C5 : LGQ2E102M (NICHICON:1000 μ F 250V)
- C3、C7 : DE1207-2E332M-KH (MURATA:3300pF 250V)
- L1 : SC-05-20J (TOKIN:2.0mH min 5.0A)
- L2 : SS28H-25045 (TOKIN:4.5mH min 2.5A)
- SS1 : D25XB60 (SINDENGEN:25A 600V)
- C10 : MDD21H104M5 (NITSUKO:0.1 μ F 50V)
- C11、C12 : Table 1 (NIPPON CHEMI-CON)

Table 1

MODEL	C11	C12
DBS400B03	LZX10VB3300MK25	LZX10VB3300MK25
DBS400B05, 07	LZX10VB2200MK20	LZX10VB2200MK20
DBS400B12	LZX25VB1000MK20	LZX25VB1000MK20
DBS400B15, 18	LZX35VB1000MK25	LZX35VB1000MK25
DBS400B24, 28	LZY50VB820MK40	-

Fig 1. Testing circuitry



LINE CONDUCTION

Model Name : DBS400B05

Model No. :

Serial No. :

Detector : PEAK/QP/Ave.

Points : 3

Line Mode : VA/VB

Limit1: [EN 55022] Class B(QP)

Limit2: [EN 55022] Class B(Ave.)

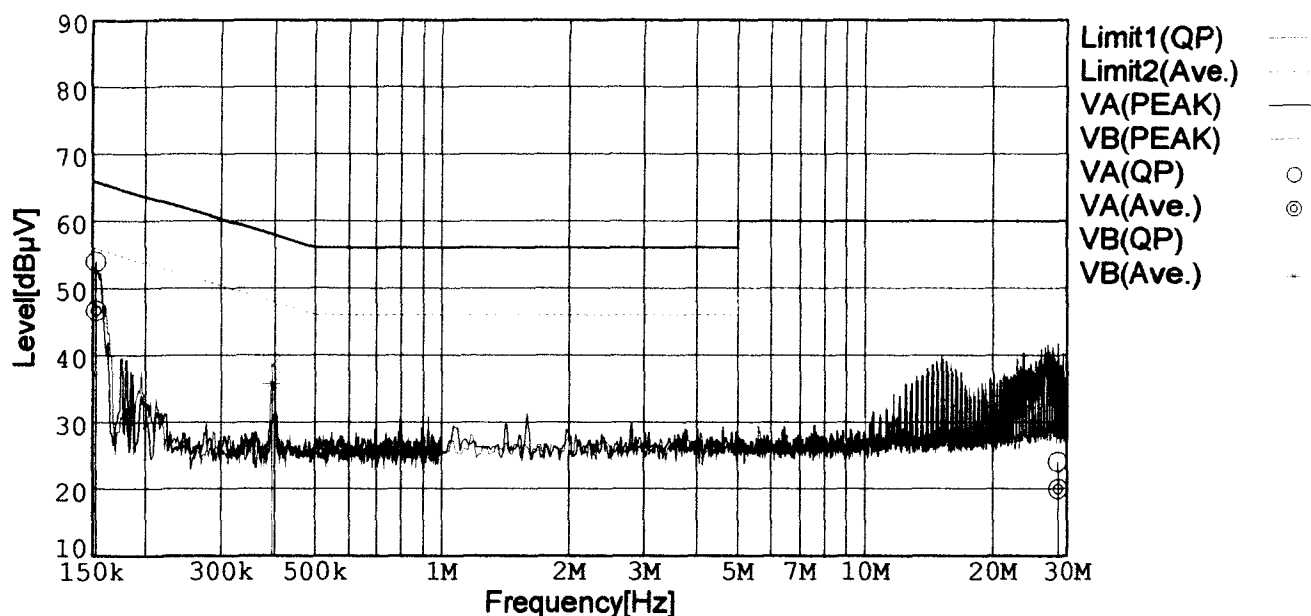
Temperature : 25deg C

Humidity : 45%

Comment : Vin=AC230V, Io=100%

Date : 2000/7/21 11:33

EMI Receiver(s) : R3261A,ESPC



Frequency [MHz]	Meter Reading (QP) [dBμV]	Meter Reading (Ave.) [dBμV]	Factor [dB]	Level (QP) [dBμV]	Level (Ave.) [dBμV]	Line	Limit (QP) [dBμV]	Limit (Ave.) [dBμV]	Margin (QP)[dB]	Margin (Ave.) [dB]
0.1523	43.6	36.3	10.3	53.9	46.6	VA	65.9	55.9	12.0	9.3
28.4519	13.1	9.0	11.0	24.1	20.0	VA	60.0	50.0	35.9	30.0
0.3920	28.3	25.5	10.2	38.5	35.7	VB	58.0	48.0	19.5	12.3

Conditions

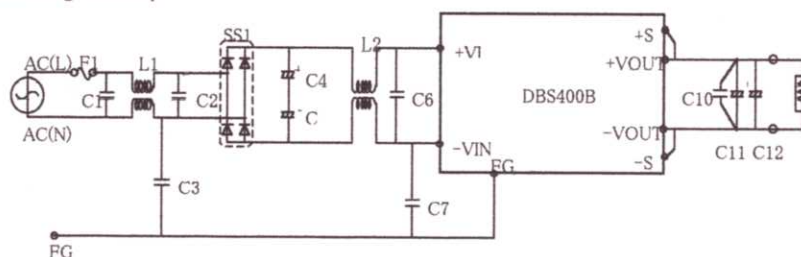
Date 2000/8/11

Test : LINE CONDUCTION
Model Name : DBS400B

Photographs of Test Set-Up



Testing circuitry



- F1 : CES15 (SOC:15A 250V)
C1、C2 : CFJC22E474M (NITSUKO:0.47 μ F 250V)
C6 : CFJC22E224M (NITSUKO:0.22 μ F 250V)
C4、C5 : LGQ2E102M (NICHICON:1000 μ F 250V)
C3、C7 : DE1207-2E332M-KH (MURATA:3300pF 250V)
L1 : SC-05-20J (TOKIN:2.0mH min 5.0A)
L2 : SS28H-25045 (TOKIN:4.5mH min 2.5A)
SS1 : D25XB60 (SINDENGEN:25A 600V)
C10 : MDD21H104M5 (NITSUKO:0.1 μ F 50V)
C11、C12 : Table 1(NIPPON CHEMI-CON)

Table 1

MODEL	C11	C12
DBS400B03	LZX10VB3300MK25	LZX10VB3300MK25
DBS400B05, 07	LZX10VB2200MK20	LZX10VB2200MK20
DBS400B12	LZX25VB1000MK20	LZX25VB1000MK20
DBS400B15, 18	LZX35VB1000MK25	LZX35VB1000MK25
DBS400B24, 28	LZY50VB820MK40	-

Fig 1. Testing circuitry