

RADIATED EMISSION

Model Name : DBS200B07

Model No. :

Serial No. :

Temperature : 25deg C

Detector : PEAK/QP

Points : 6

Polarization : Hori. & Vert.

Limit1: [EN 55022] Class B<3m>

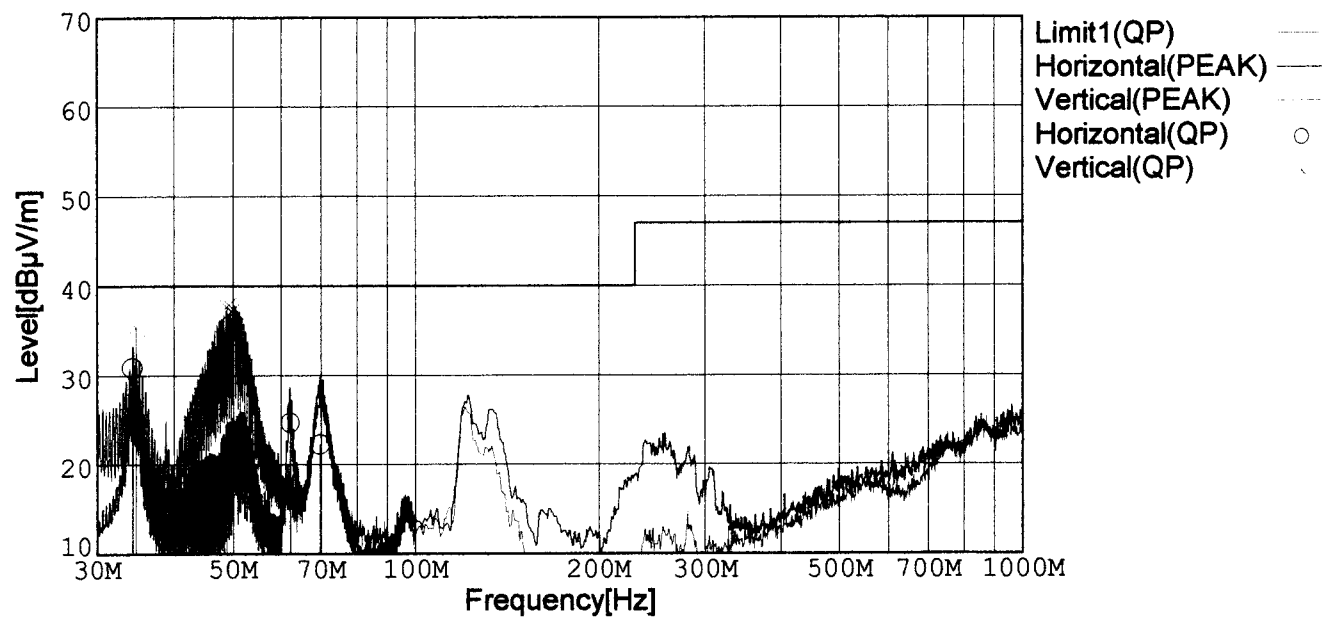
Humidity : 40%

Comment : AC230V Io=100%

Tested by : J.HATAGISHI

Date : 1999/4/9 21:17

EMI Receiver(s) : R3261A,ESPC



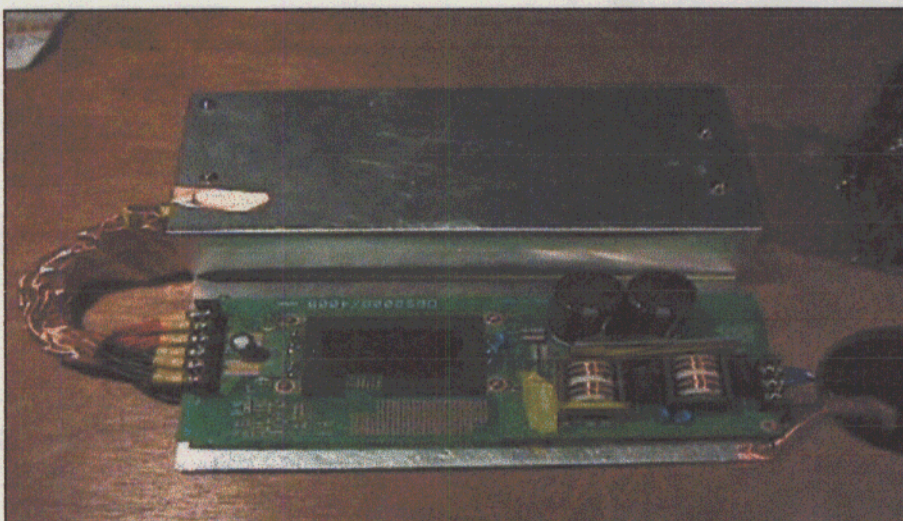
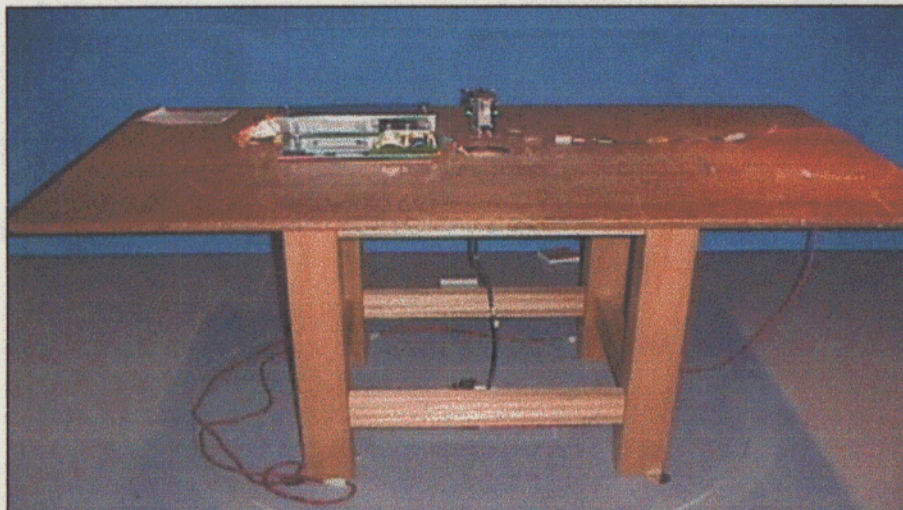
Frequency [MHz]	Meter Reading [dBμV]	Antenna Factor[dB]	Cable Loss[dB]	Level [dBμV/m]	Angle[°]	Height [cm]	Pola.	Limit [dBμV/m]	Margin [dB]
34.256	45.9	15.7	-30.8	30.8	255	122	Hori.	40.0	9.2
62.055	44.4	4.6	-24.3	24.7	299	151	Hori.	40.0	15.3
69.700	41.6	5.3	-24.6	22.3	188	158	Hori.	40.0	17.7
49.959	53.8	7.6	-24.0	37.4	126	112	Vert.	40.0	2.6
34.684	48.0	15.5	-28.1	35.4	287	105	Vert.	40.0	4.6
48.756	53.7	8.2	-24.3	37.6	169	108	Vert.	40.0	2.4

Conditions

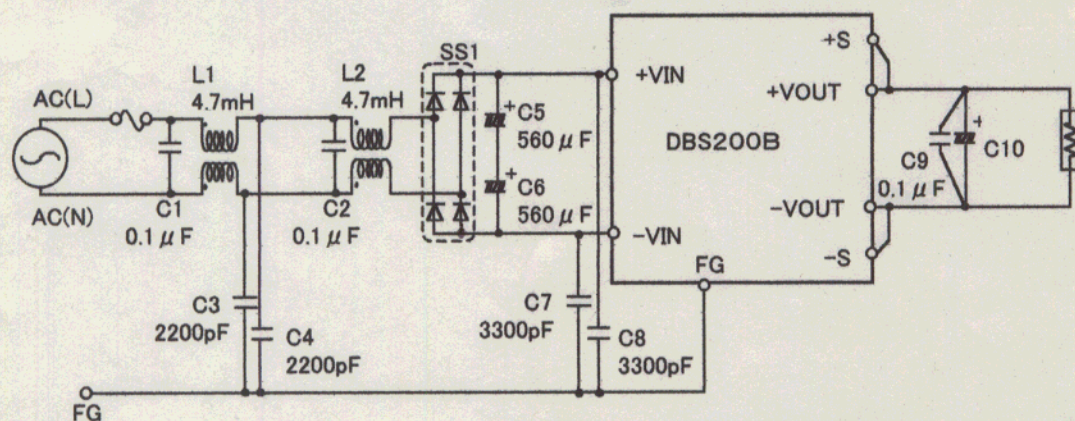
Date 1999/4/9

Test : RADIATED EMISSION
Model Name : DBS200B

○Photographs of Test Set-Up



○Testing circuitry



- L1, L2 : SS35H-35047 (TOKIN)
- C5, C6 : 250V 560 μ F (NICHICON:GQseries)
- C10 : 10V 2200 μ F (DBS200B03,05,07)
25V 1000 μ F (DBS200B12)
- SS1 : D10XB60 (SINDENG)

Fig. Testing circuitry



LINE CONDUCTION

Model Name : DBS 200B07

Model No. :

Serial No. :

Temperature : 25deg C

Detector : PEAK/QP/Ave.

Points : 6

Line Mode : VA/VB

Limit1: [EN 55022] Class B(QP)

Limit2: [EN 55022] Class B(Ave.)

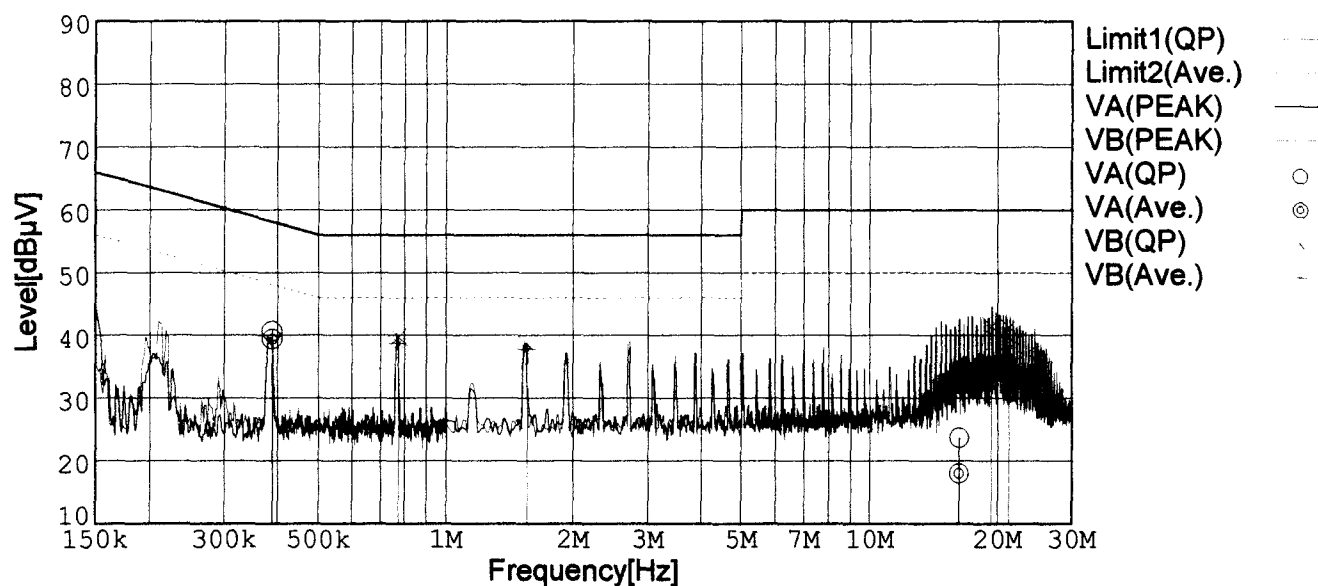
Humidity : 40%

Comment : AC230V Io=100%

Tested by : J.HATAGISHI

Date : 1999/4/9 20:58

EMI Receiver(s) : R3261A,ESPC



Frequency [MHz]	Meter Reading (QP) [dBμV]	Meter Reading (Ave.) [dBμV]	Factor [dB]	Level (QP) [dBμV]	Level (Ave.) [dBμV]	Line	Limit (QP) [dBμV]	Limit (Ave.) [dBμV]	Margin (QP)[dB]	Margin (Ave.) [dB]
0.3876	30.5	29.2	10.2	40.7	39.4	VA	58.1	48.1	17.4	8.7
0.7717	29.7	28.7	10.1	39.8	38.8	VB	56.0	46.0	16.2	7.2
1.5467	28.5	27.7	10.1	38.6	37.8	VB	56.0	46.0	17.4	8.2
19.3140	30.7	25.3	10.8	41.5	36.1	VB	60.0	50.0	18.5	13.9
21.2374	30.5	25.6	10.8	41.3	36.4	VB	60.0	50.0	18.7	13.6

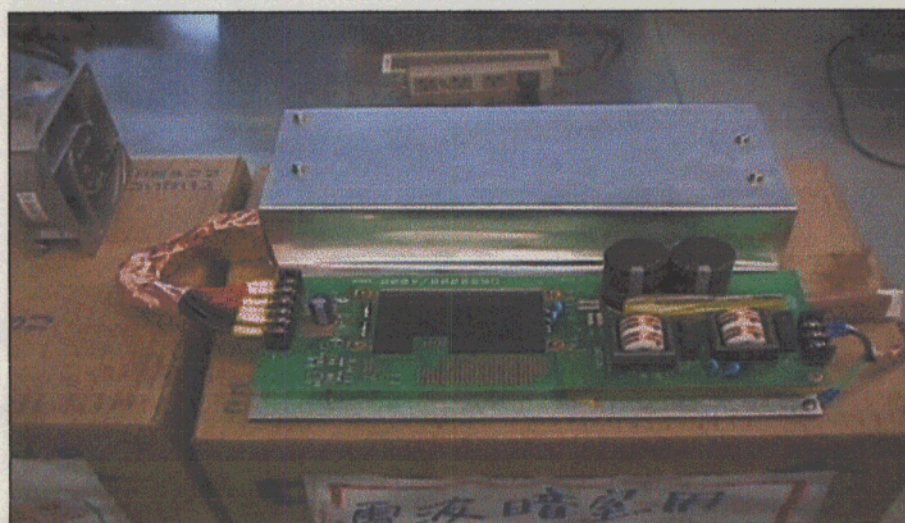
Conditions

Date 1999/4/9

Test : LINE CONDUCTION

Model Name : DBS200B

○Photographs of Test Set-Up



○Testing circuitry

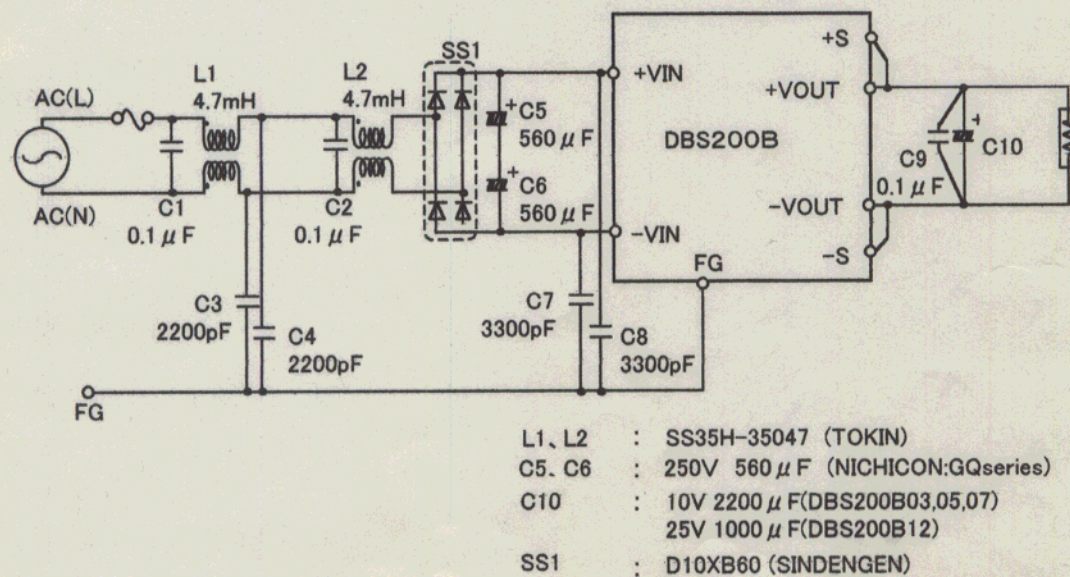


Fig. Testing circuitry