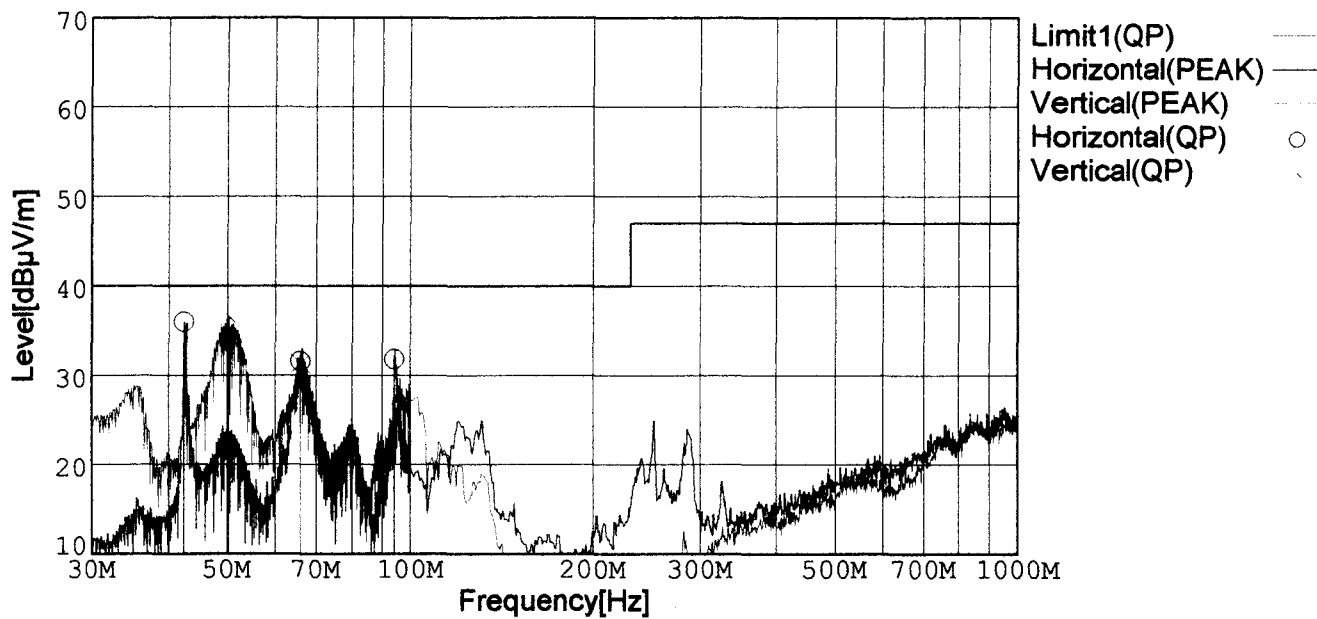


## RADIATED EMISSION

Model Name : DBS200B05  
 Model No. :  
 Serial No. :  
 Temperature : 25deg C  
 Detector : PEAK/QP  
 Points : 4  
 Polarization : Hori. & Vert.  
 Limit1: [EN 55022] Class B<3m>

Humidity : 40%  
 Comment : AC230V Io=100%  
 Tested by : J.HATAGISHI  
 Date : 1999/4/9 22:18  
 EMI Receiver(s) : R3261A,ESPC



| Frequency [MHz] | Meter Reading [dBμV] | Antenna Factor [dB] | Cable Loss [dB] | Level [dBμV/m] | Angle [°] | Height [cm] | Pola. | Limit [dBμV/m] | Margin [dB] |
|-----------------|----------------------|---------------------|-----------------|----------------|-----------|-------------|-------|----------------|-------------|
| 42.343          | 52.3                 | 11.5                | -27.9           | 35.9           | 284       | 113         | Hori. | 40.0           | 4.1         |
| 65.982          | 50.9                 | 4.8                 | -24.2           | 31.5           | 120       | 140         | Hori. | 40.0           | 8.5         |
| 94.098          | 47.3                 | 9.1                 | -24.6           | 31.8           | 232       | 131         | Hori. | 40.0           | 8.2         |
| 50.211          | 53.0                 | 7.5                 | -24.0           | 36.5           | 110       | 110         | Vert. | 40.0           | 3.5         |
| 65.982          | 49.8                 | 4.8                 | -23.3           | 31.3           | 5         | 151         | Vert. | 40.0           | 8.7         |

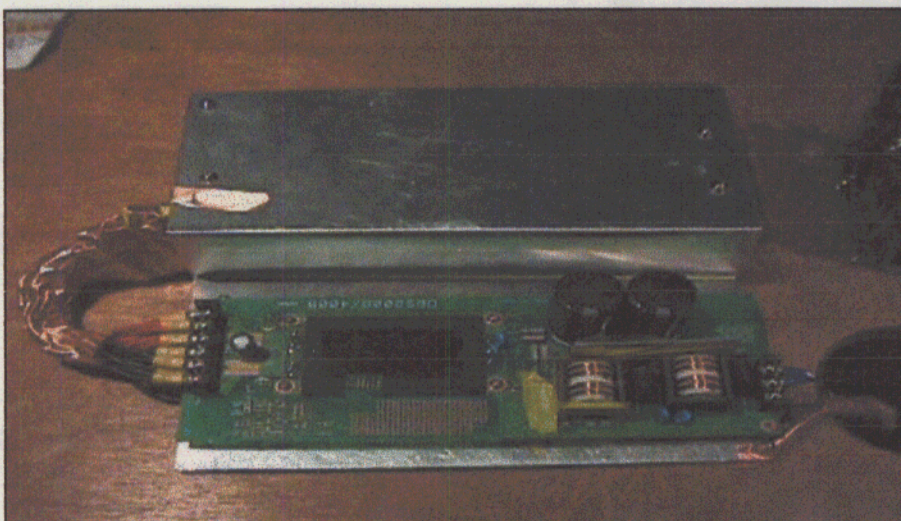
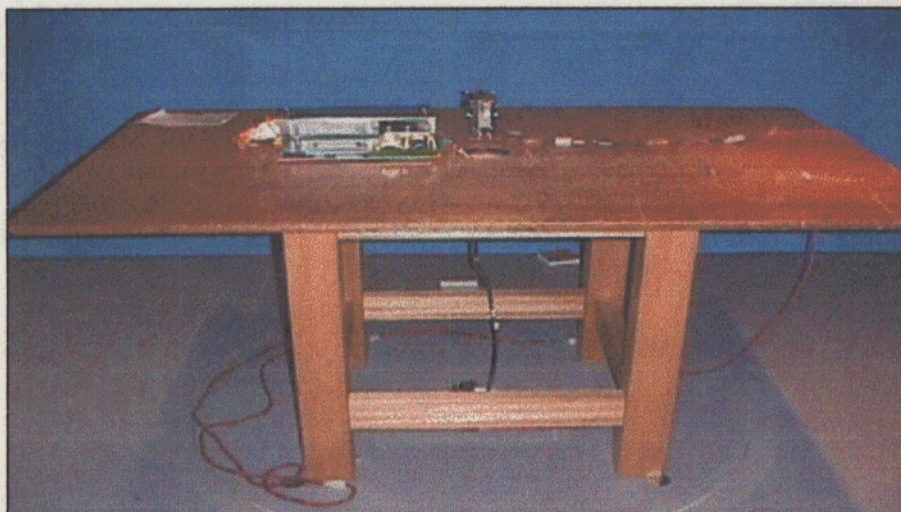


# Conditions

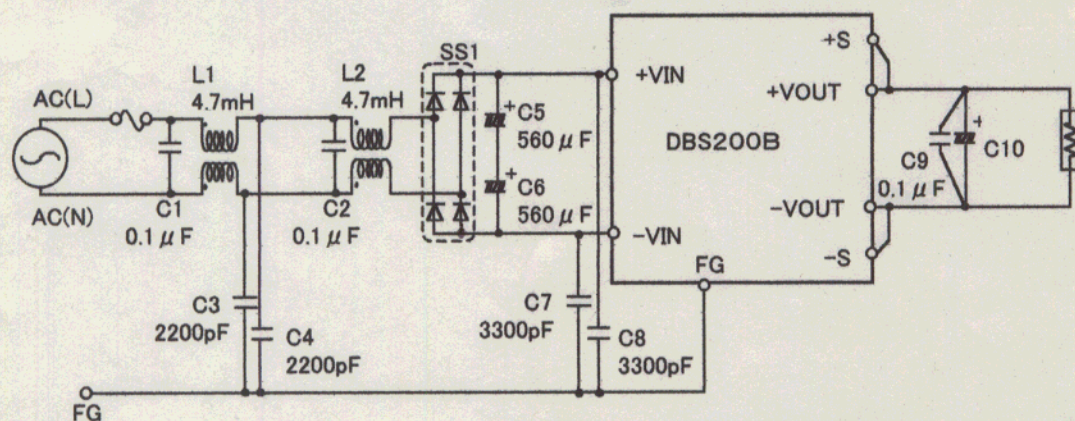
Date 1999/4/9

Test : RADIATED EMISSION  
Model Name : DBS200B

## Photographs of Test Set-Up



## Testing circuitry



- L1, L2 : SS35H-35047 (TOKIN)
- C5, C6 : 250V 560  $\mu$ F (NICHICON:GQseries)
- C10 : 10V 2200  $\mu$ F (DBS200B03,05,07)  
25V 1000  $\mu$ F (DBS200B12)
- SS1 : D10XB60 (SINDENG)

Fig. Testing circuitry



## LINE CONDUCTION

Model Name : DBS200B05

Model No. :

Serial No. :

Temperature : 25deg C

Detector : PEAK/QP/Ave.

Points : 5

Line Mode : VA/VB

Limit1: [EN 55022] Class B(QP)

Limit2: [EN 55022] Class B(Ave.)

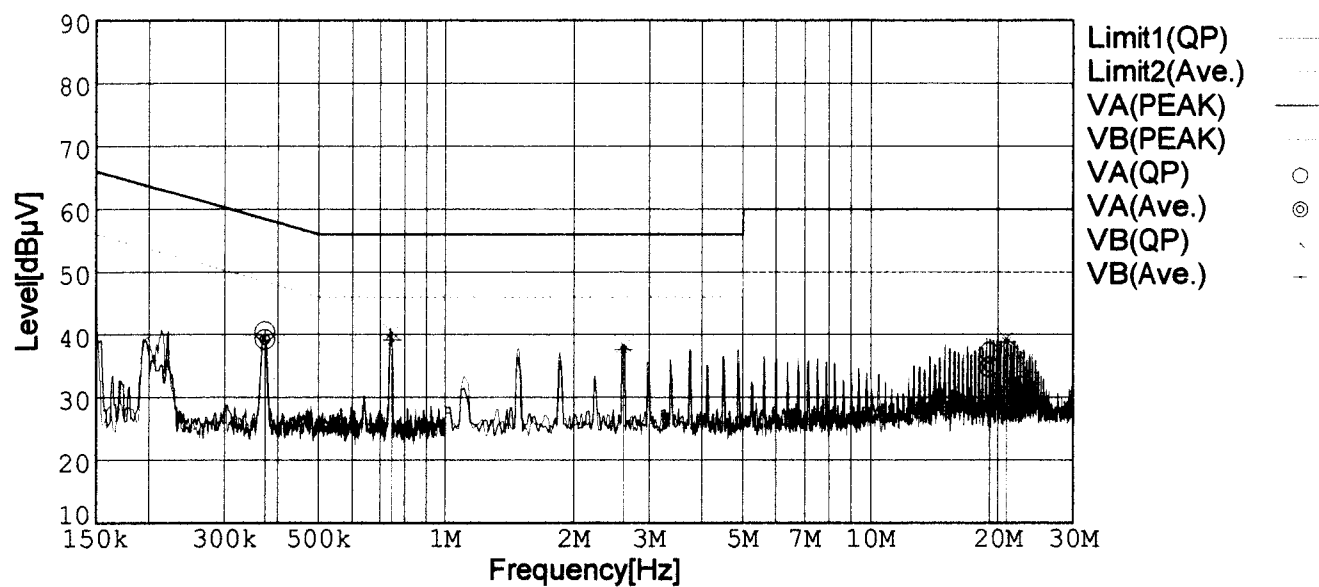
Humidity : 40%

Comment : AC230V Io=100%

Tested by : J.HATAGISHI

Date : 1999/4/9 21:55

EMI Receiver(s) : R3261A,ESPC



| Frequency [MHz] | Meter Reading (QP) [dBμV] | Meter Reading (Ave.) [dBμV] | Factor [dB] | Level (QP) [dBμV] | Level (Ave.) [dBμV] | Line | Limit (QP) [dBμV] | Limit (Ave.) [dBμV] | Margin (QP)[dB] | Margin (Ave.) [dB] |
|-----------------|---------------------------|-----------------------------|-------------|-------------------|---------------------|------|-------------------|---------------------|-----------------|--------------------|
| 0.3723          | 30.3                      | 29.0                        | 10.2        | 40.5              | 39.2                | VA   | 58.4              | 48.4                | 17.9            | 9.2                |
| 19.0617         | 26.5                      | 24.1                        | 10.7        | 37.2              | 34.8                | VA   | 60.0              | 50.0                | 22.8            | 15.2               |
| 0.7460          | 30.2                      | 29.1                        | 10.1        | 40.3              | 39.2                | VB   | 56.0              | 46.0                | 15.7            | 6.8                |
| 2.6148          | 28.2                      | 27.6                        | 10.1        | 38.3              | 37.7                | VB   | 56.0              | 46.0                | 17.7            | 8.3                |
| 20.9194         | 28.6                      | 28.1                        | 10.8        | 39.4              | 38.9                | VB   | 60.0              | 50.0                | 20.6            | 11.1               |



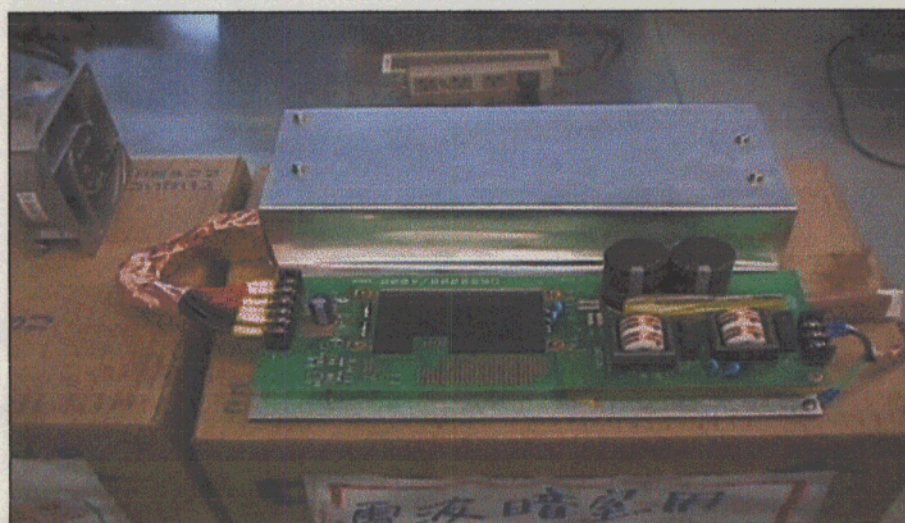
## Conditions

Date 1999/4/9

Test : LINE CONDUCTION

Model Name : DBS200B

○Photographs of Test Set-Up



○Testing circuitry

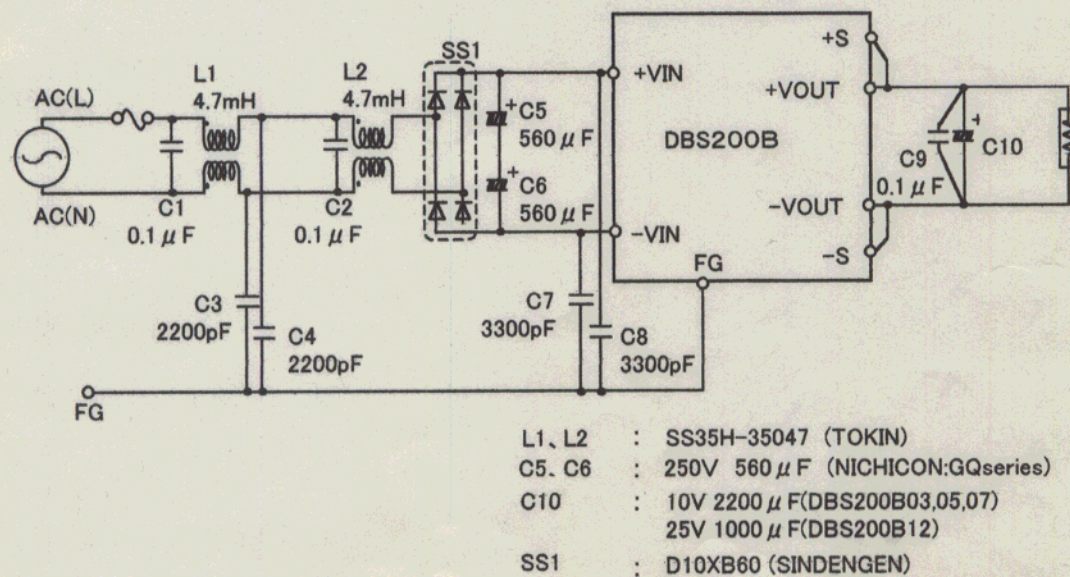


Fig. Testing circuitry