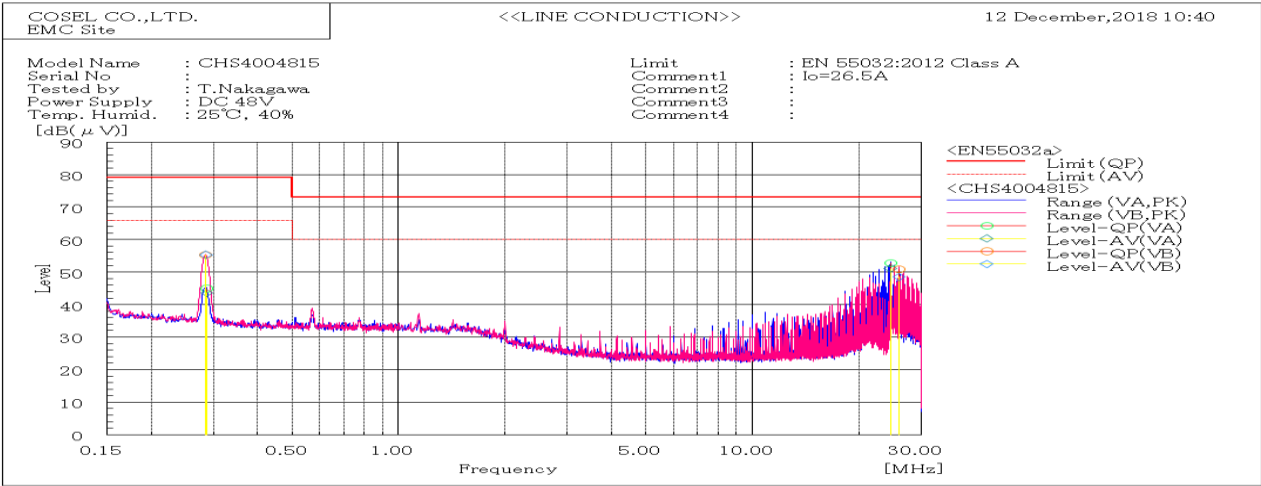
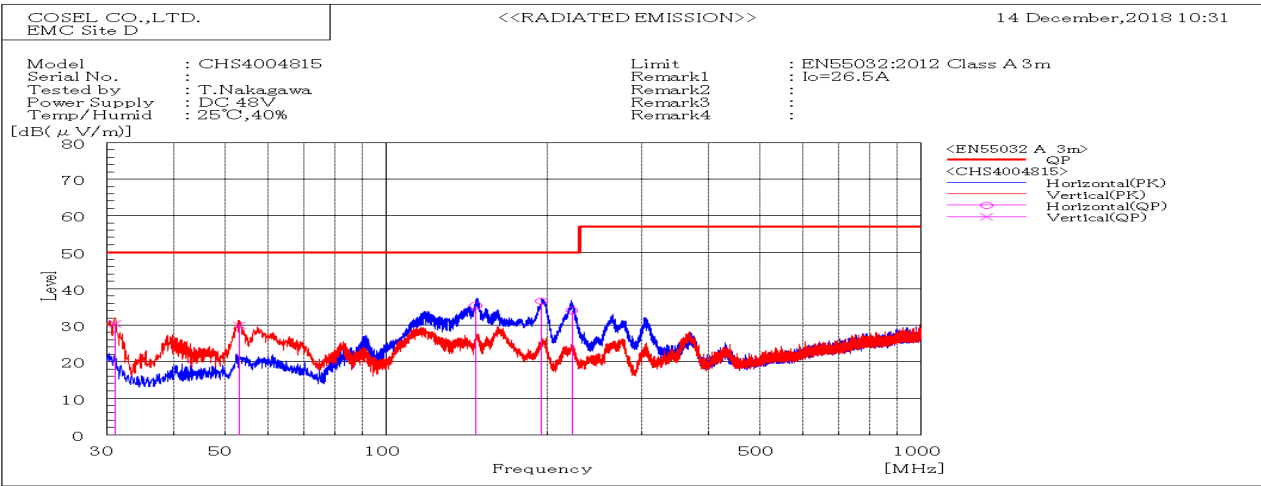


DATA SHEET		Date	19-Jan-19
Model	CHS4004815	Temp.	25 degreeC
Test	EMI Line conduction & Radiated emission	Humid.	40 %RH
		Tested by	T.Nakagawa



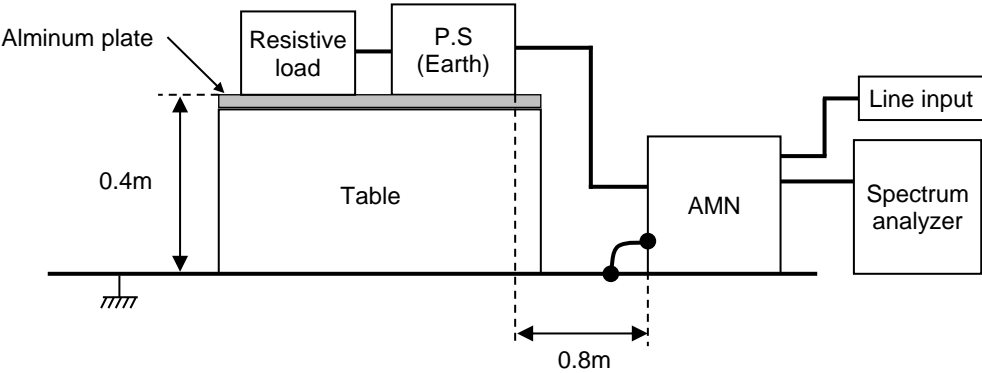
Frequency MHz	Line Phase	Level dB(μV)		Limit dB(μV)		Margin dB		Pass/Fail	Remark
		QP	AV	QP	AV	QP	AV		
0.288	LA	44.9	43.6	79.0	66.0	34.1	22.4	Pass	
24.583	LA	52.7	51.2	73.0	60.0	20.3	8.8	Pass	
0.286	LB	55.3	55.4	79.0	66.0	23.7	10.6	Pass	
26.011	LB	50.9	48.5	73.0	60.0	22.1	11.5	Pass	



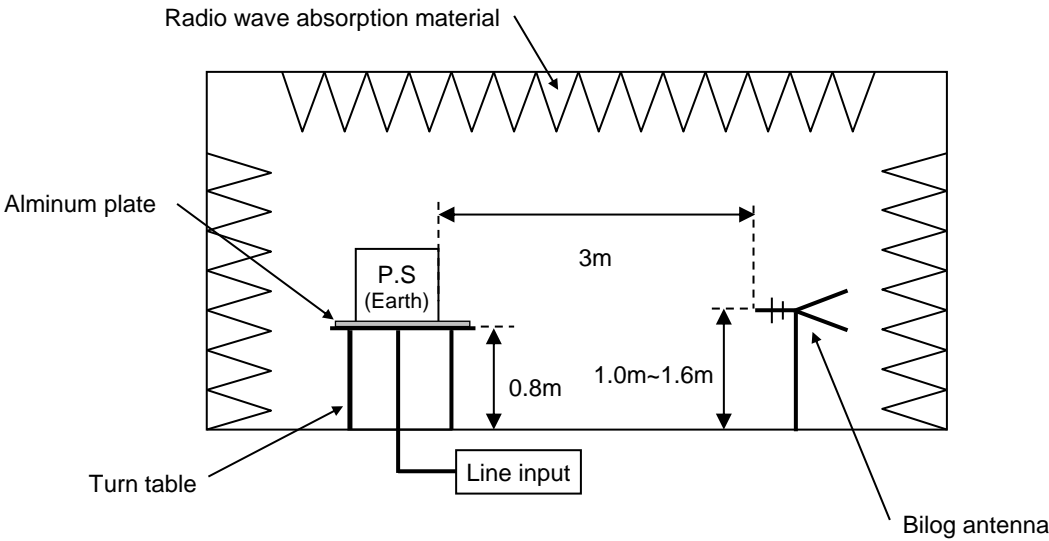
Frequency MHz	Polarization	Stability	Level dB(μV/m)	Limit dB(μV/m)	Margin dB	Pass/Fail	Height cm	Angle deg	Remark
			QP	QP	QP				
147.160	H	Stable	35.4	50.0	14.6	Pass	200.0	113.0	
194.756	H	Stable	36.6	50.0	13.4	Pass	196.6	357.9	
222.259	H	Stable	34.0	50.0	16.0	Pass	105.3	117.8	
31.038	V	Stable	30.4	50.0	19.6	Pass	100.0	0.0	
52.918	V	Stable	30.0	50.0	20.0	Pass	100.0	29.8	

DATA SHEET		Date	19-Jan-19
Model	Circuit used for measurement	Temp.	25 degreeC
Test	EMI Line conduction & Radiated emission	Humid.	40 %RH
		Tested by	T.Nakagawa

1. Line conduction



2. Radiated emission



Conditions

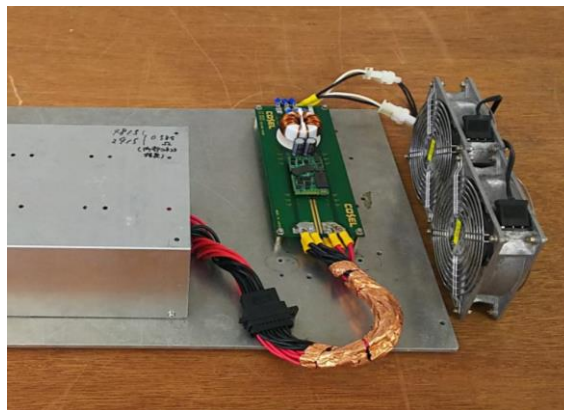
Test : EMI
Model Name : CHS40048□

○Photographs of Test Set-Up

LINE CONDUCTION



RADIATED EMISSION



○Testing circuitry

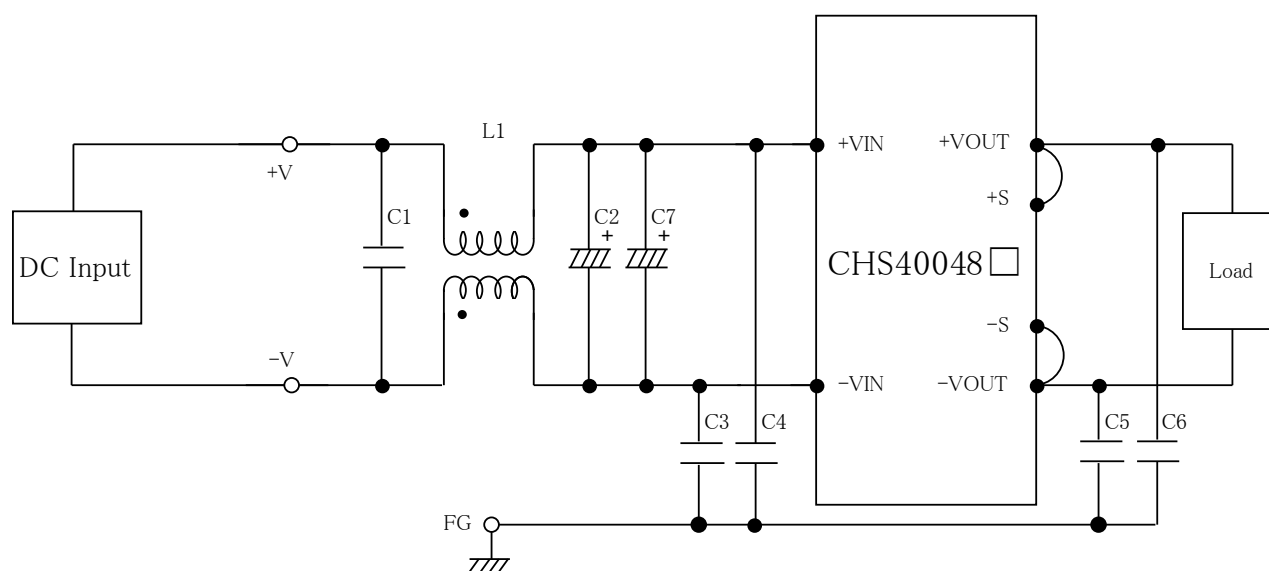


Fig.1 Testing circuitry

L1 : 1mH SC-20-10JH (TOKIN)
C1 : 250V 2.2 μ F FPD22E225J4 (NITSUKO)
C2,C7 : 100V 100 μ F PWseries (nichicon)
C3,C4 : 630V 0.068 μ F FPD22J683J4 (NITSUKO)
C5,C6 : 630V 0.033 μ F FPD22J333J4 (NITSUKO)