

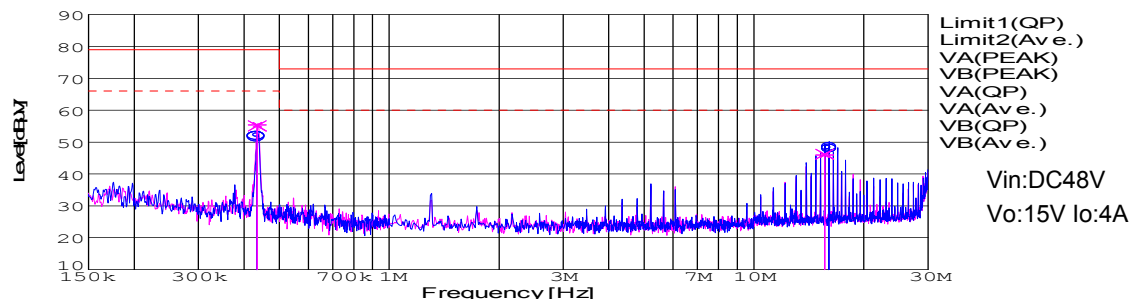
DATA SHEET

Model		CES48150-4	Date	23-May-08
Test		EMI Line conduction & Radiated emission	Temp.	25 degreeC
			Humid.	45 %RH
			Tested by	J.Hatagishi

LINE CONDUCTION

Model Name : CES48150-4
 Model No. :
 Serial No. :
 Points : 4
 Detector : PEAK/QP/Ave.
 Line Mode : VA/VB
 Power Supply :
 Limit1: [EN 55022] Class A(QP)
 Limit2: [EN 55022] Class A(Ave.)

Temp. : 25degC
 Humi. : 45%
 Date : 2008/5/23 18:41
 Test Equip. : R3132,ESPC
 Load Line :
 Comment :

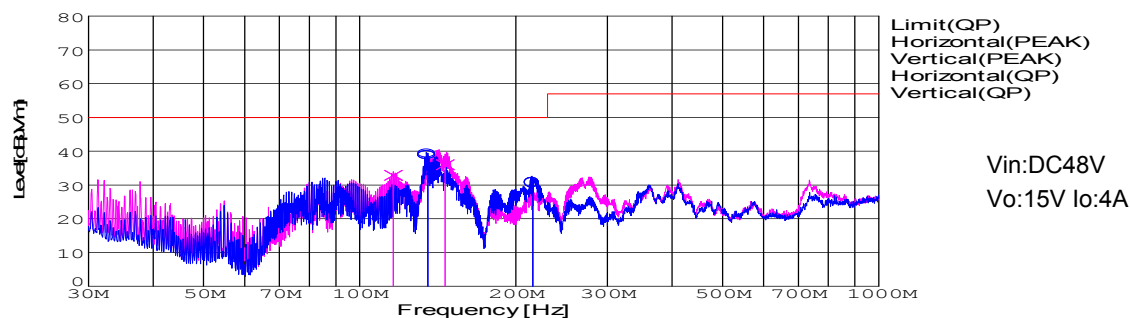


Frequency [MHz]	Meter Reading (Ave.) [dBuV]	Meter Reading (QP) [dBuV]	Factor [dB]	Level(Ave.) [dBuV]	Level(QP) [dBuV]	Line	Limit(Ave.) [dBuV]	Limit(QP) [dBuV]	Margin(Ave.) [dB]	Margin(QP) [dB]
0.4343	42.1	41.8	9.9	52	51.7	VA	66	79	14	27.3
16.0619	37.8	38.2	10.2	48	48.4	VA	60	73	12	24.6
0.4347	45.5	45.2	9.9	55.4	55.1	VB	66	79	10.6	23.9
15.629	35.7	36	10.2	45.9	46.2	VB	60	73	14.1	26.8

RADIATED EMISSION

Model Name : CES48150-4
 Model No. :
 Serial No. :
 Points : 5
 Detector : PEAK/QP
 Polarization : Hori. & Vert.
 Power Supply :
 Limit: [EN 55022] Class A<3m>

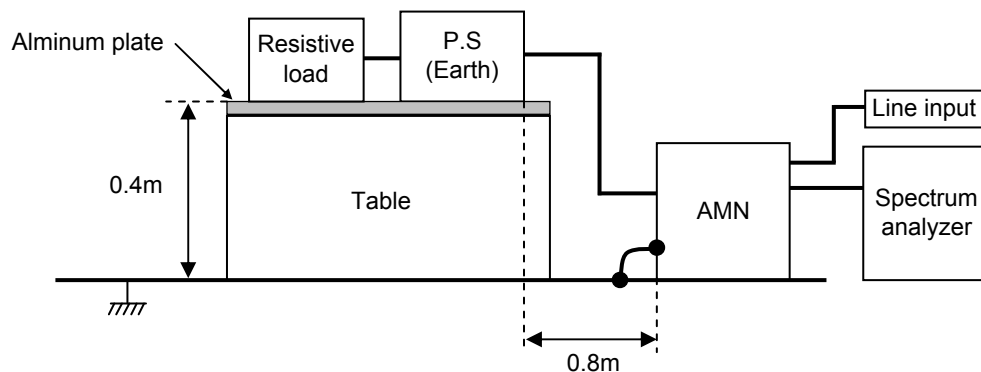
Temp. : 25degC
 Humi. : 45%
 Date : 2008/5/23 18:19
 Test Equip. : R3132,ESPC
 Load Line :
 Comment :



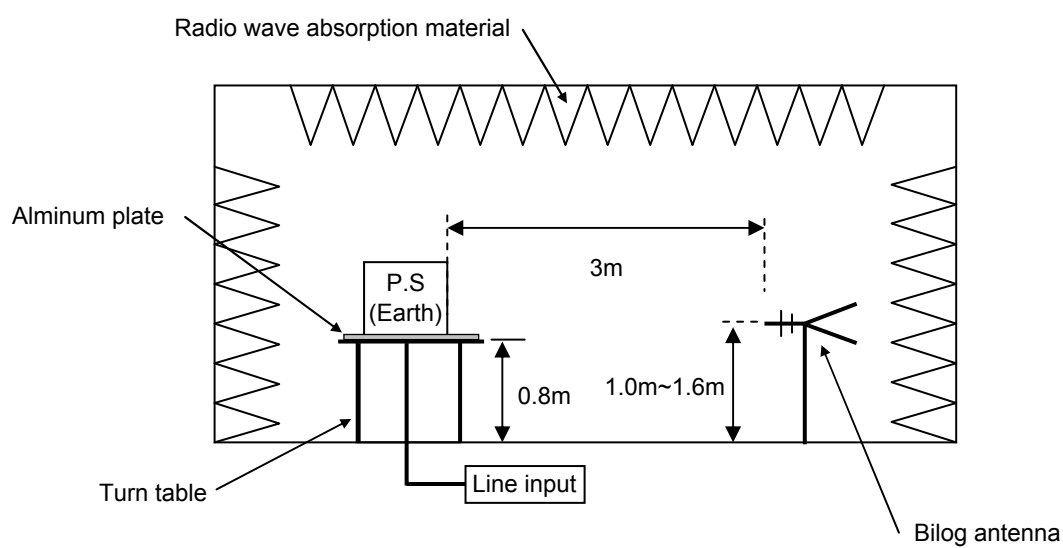
Frequency [MHz]	MeterReading (QP) [dBuV]	Ant. Type	Antenna Factor [dB/m]	Cable & Preamp [dB]	Level(QP) [dBuV/m]	Angle [°]	Height [cm]	Polar.	Limit [dBuV/m]	Margin [dB]
135.199	59.9	BL	11	-31.6	39.3	84	154	Hori.	50	10.7
135.189	59.3	BL	11	-31.6	38.7	84	154	Hori.	50	11.3
215.602	53	BL	8.8	-31.2	30.6	76	157	Hori.	50	19.4
116.06	53.6	BL	10.9	-31.7	32.8	1	154	Vert.	50	17.2
146.12	56.9	BL	10.7	-31.6	36	10	145	Vert.	50	14

DATA SHEET		Date	23-May-08
Model	Circuit used for measurement	Temp.	25 degreeC
Test	EMI Line conduction & Radiated emission	Humid.	45 %RH
		Tested by	J.Hatagishi

1. Line conduction



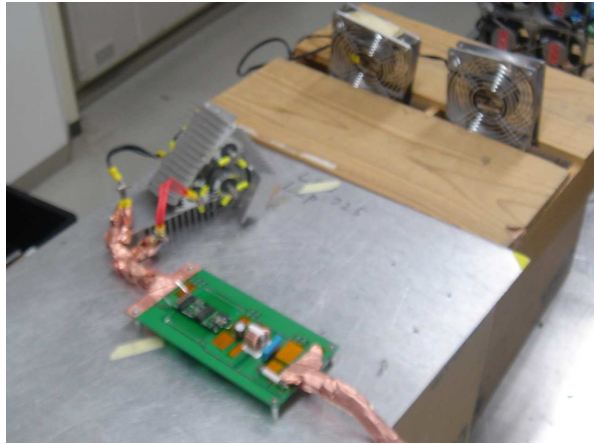
2. Radiated emission



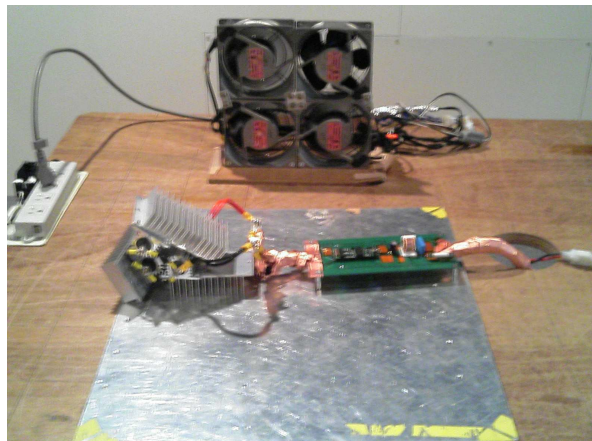
TEST : EMI
Model Name : CES48150-4

Date 2008/5/23

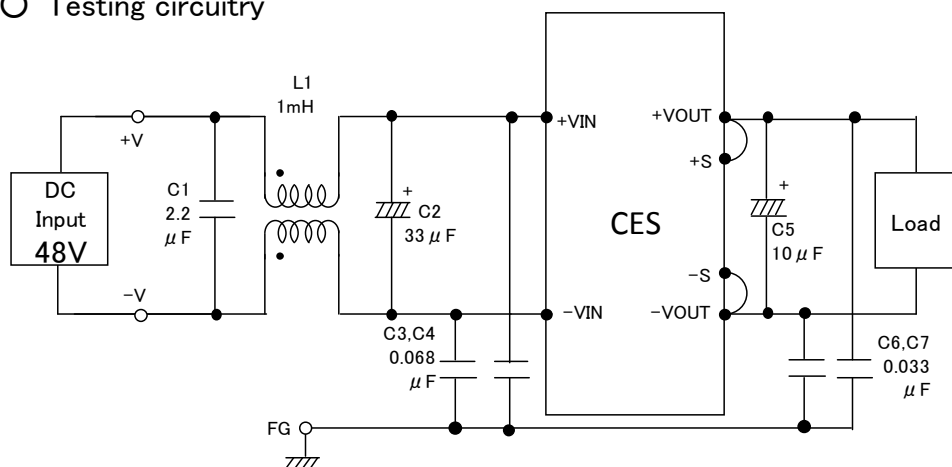
○ Photographs of Test Set-Up
LINE CONDUCTION



RADIATED EMISSION



○ Testing circuitry



L1 : 1mH 5A Inductor
C1 : 2.2 μ F Film capacitor
C2 : 100V 33 μ F Electric capacitor
C3,4 : 630V 0.068 μ F Film capacitor
C5 : 25V 10 μ F Electric capacitor
C6,7 : 630V 0.033 μ F Film capacitor