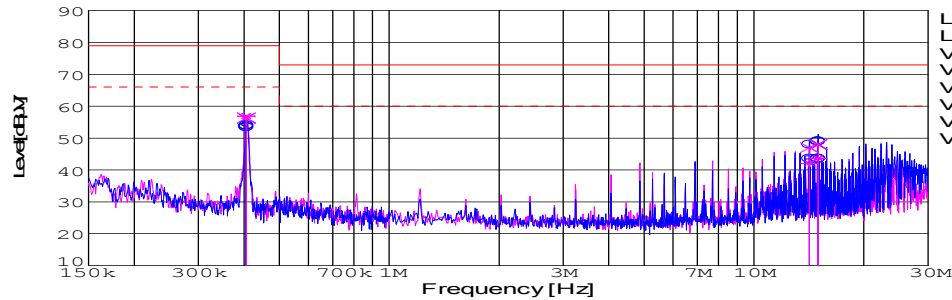


DATA SHEET		Date	11-Oct-08
Model	CES48033-30P	Temp.	25 degreeC
Test	EMI Line conduction & Radiated emission	Humid.	45 %RH
		Tested by	J.Hatagishi

LINE CONDUCTION

Model Name : CES48033-30P
Model No. :
Serial No. :
Points : 3
Detector : PEAK/QP/Ave.
Line Mode : VA/VB
Power Supply : DC 48V
Limit1: [EN 55022] Class A(QP)
Limit2: [EN 55022] Class A(Ave.)

Temp. : 25degC
Humi. : 45%
Date : 2008/10/11 10:24
Test Equip. : R3132,ESPC
Load Line :
Comment :



Limit1(QP) :
Limit2(Ave.) :
VA(PEAK) :
VB(PEAK) :
VA(QP) :
VA(Ave.) :
VB(QP) :
VB(Ave.) :

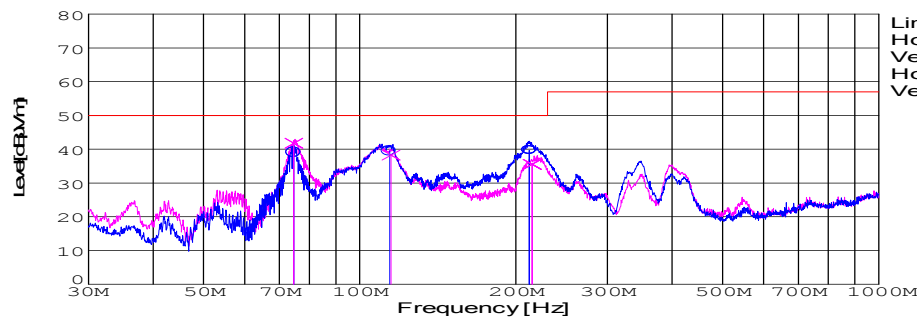
Vin:DC48V
Vo:3.3V Io:30A

Frequency [MHz]	Meter Reading (Ave.) [dBuV]	Meter Reading (QP) [dBuV]	Factor [dB]	Level(Ave.) [dBuV]	Level(QP) [dBuV]	Line	Limit(Ave.) [dBuV]	Limit(QP) [dBuV]	Margin(Ave.) [dB]	Margin(QP) [dB]
0.4054	44.1	43.5	9.9	54	53.4	VA	66	79	12	25.6
14.1926	33.4	37.7	10.2	43.6	47.9	VA	60	73	16.4	25.1
15.0023	33.4	38.7	10.2	43.6	48.9	VA	60	73	16.4	24.1
0.4057	47	46.4	9.9	56.9	56.3	VB	66	79	9.1	22.7
14.1923	31.9	36.8	10.2	42.1	47	VB	60	73	17.9	26
15.0022	33.5	37.8	10.2	43.7	48	VB	60	73	16.3	25

RADIATED EMISSION

Model Name : CES48033-30P
Model No. :
Serial No. :
Points : 3
Detector : PEAK/QP
Polarization : Hori. & Vert.
Power Supply :
Limit: [EN 55022] Class A<3m>

Temp. : 25degC
Humi. : 45%
Date : 2008/10/11 13:22
Test Equip. : R3132,ESPC
Load Line :
Comment :



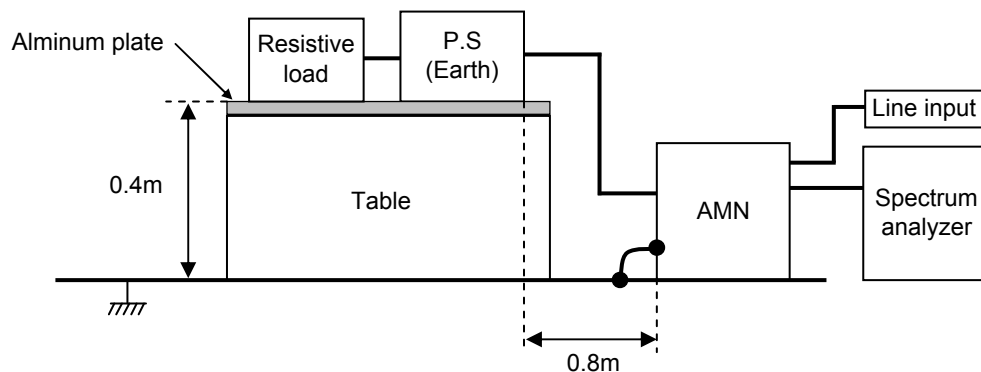
Limit(QP) :
Horizontal(PEAK) :
Vertical(PEAK) :
Horizontal(QP) :
Vertical(QP) :

Vin:DC48V
Vo:3.3V Io:30A

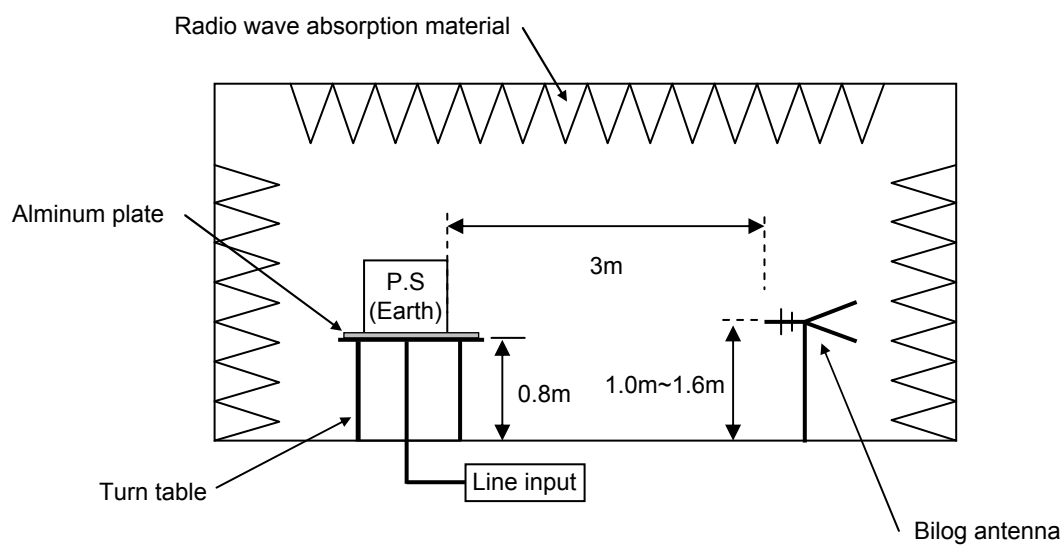
Frequency [MHz]	MeterReading (QP) [dBuV]	Ant. Type	Antenna Factor [dB/m]	Cable & Preamp [dB]	Level(QP) [dBuV/m]	Angle [°]	Height [cm]	Polar.	Limit [dBuV/m]	Margin [dB]
74.635	64.6	BL	6.3	-31.9	39	165	152	Hori.	50	11
114.129	60.3	BL	10.8	-31.7	39.4	169	156	Hori.	50	10.6
211.989	62.2	BL	8.7	-31.3	39.6	141	151	Hori.	50	10.4
74.626	67.3	BL	6.3	-31.9	41.7	57	132	Vert.	50	8.3
114.894	59.1	BL	10.8	-31.7	38.2	279	156	Vert.	50	11.8
214.945	57.9	BL	8.8	-31.2	35.5	122	142	Vert.	50	14.5

DATA SHEET		Date	11-Oct-08
Model	Circuit used for measurement	Temp.	25 degreeC
Test	EMI Line conduction & Radiated emission	Humid.	45 %RH
		Tested by	J.Hatagishi

1. Line conduction



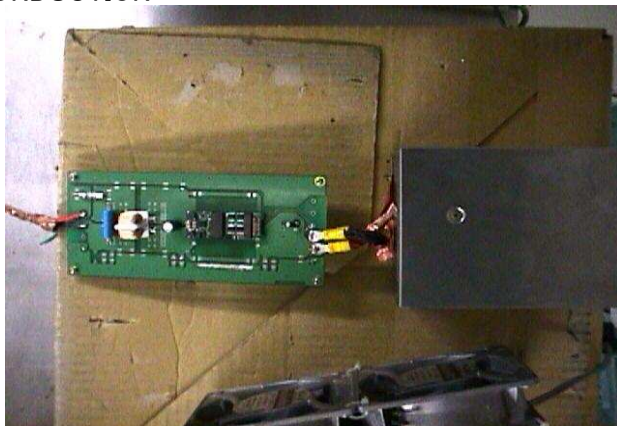
2. Radiated emission



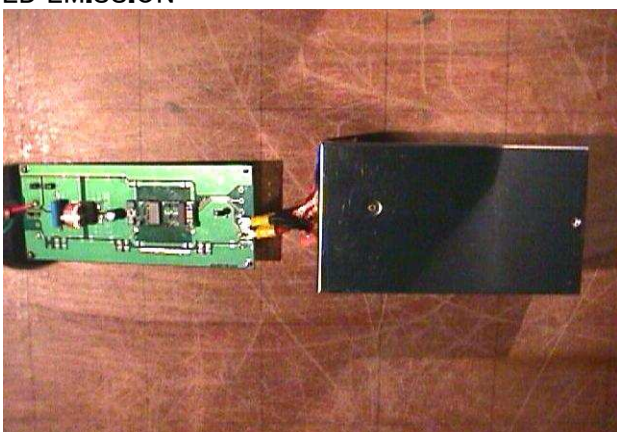
TEST : EMI
Model Name : CES480.33-30P

Date 2008/10/11

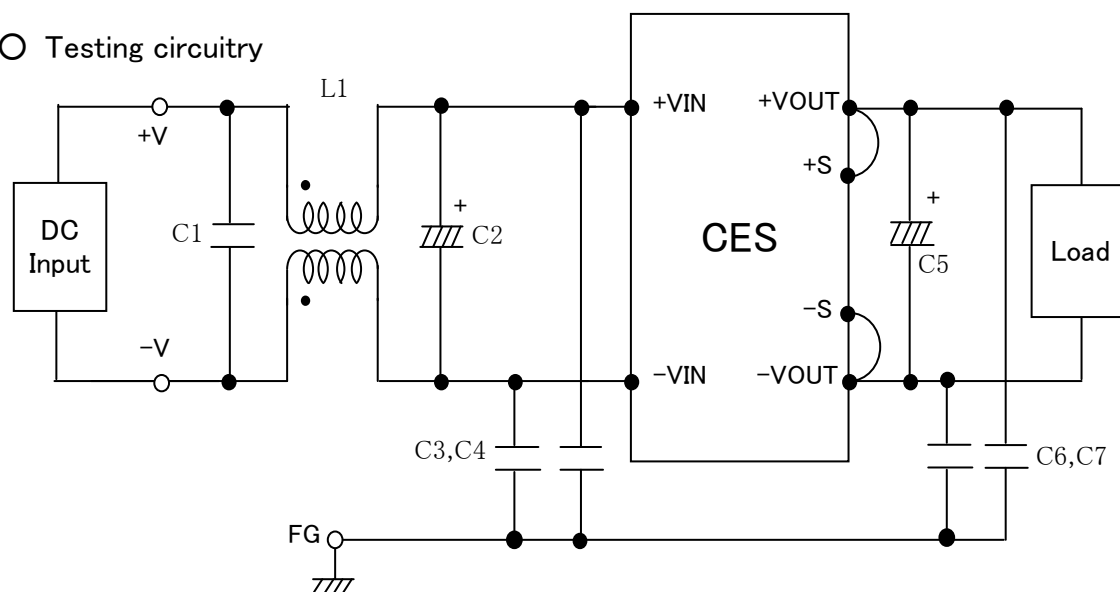
○ Photographs of Test Set-Up
LINE CONDUCTION



RADIATED EMISSION



○ Testing circuitry



L1 : 1mH 5A Inductor
C1 : 2.2 μ F Film capacitor
C2 : 100V 47 μ F Electric capacitor
C3,4 : 630V 0.068 μ F Film capacitor
C5 : 10V 10 μ F Electric capacitor
C6,7 : 630V 0.033 μ F Film capacitor