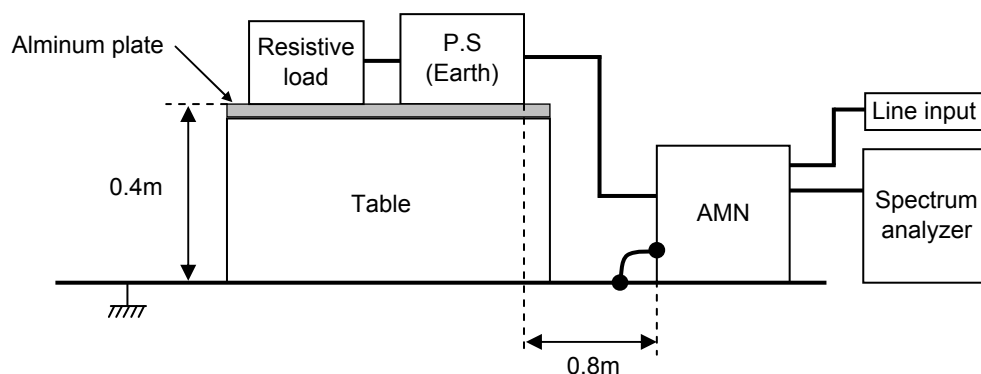


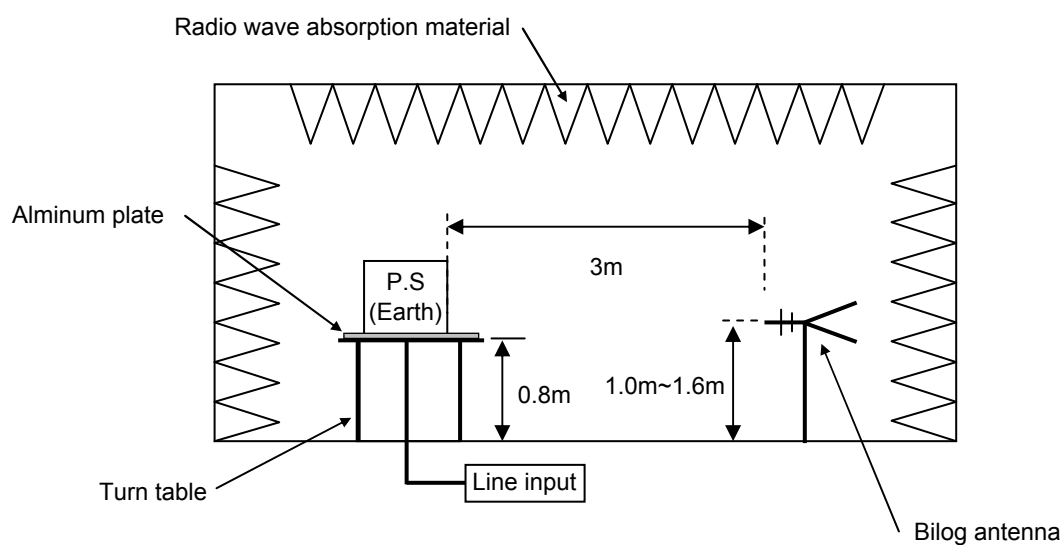
DATA SHEET							Date	Aug 6,2007																																																																															
Model	CES24120-6						Temp.	25 degreeC																																																																															
Test	EMI Line conduction & Radiated emission						Humid.	45 %RH																																																																															
							Tested by	T.Mizuhara																																																																															
LINE CONDUCTION																																																																																							
Model Name : CES24120-6			Temp. : 25degC																																																																																				
Model No. :			Humi. : 45%Rh																																																																																				
Serial No. :			Date : 2007/8/6 19:00																																																																																				
Points : 6			Test Equip. : R3132,ESPC																																																																																				
Detector : PEAK/QP/Ave.			Load Line :																																																																																				
Line Mode : VA/VB			Comment :																																																																																				
Power Supply : DC 24V																																																																																							
Limit1: [EN 55022] Class A(QP)																																																																																							
Limit2: [EN 55022] Class A(Ave.)																																																																																							
							Vin:DC24V Vo:12V Io:6A																																																																																
<table><tr><th>Frequency [MHz]</th><th>Meter Reading (Ave.) [dBuV]</th><th>Meter Reading (QP) [dBuV]</th><th>Factor [dB]</th><th>Level(Ave.) [dBuV]</th><th>Level(QP) [dBuV]</th><th>Line</th><th>Limit(Ave.) [dBuV]</th><th>Limit(QP) [dBuV]</th><th>Margin(Ave.) [dB]</th><th>Margin(QP) [dB]</th></tr><tr><td>15.4599</td><td>38.9</td><td>39.1</td><td>10.2</td><td>49.1</td><td>49.3</td><td>VA</td><td>60</td><td>73</td><td>10.9</td><td>23.7</td></tr><tr><td>16.3687</td><td>41.2</td><td>41.7</td><td>10.2</td><td>51.4</td><td>51.9</td><td>VA</td><td>60</td><td>73</td><td>8.6</td><td>21.1</td></tr><tr><td>0.2082</td><td>22.2</td><td>29</td><td>9.8</td><td>32</td><td>38.8</td><td>VB</td><td>66</td><td>79</td><td>34</td><td>40.2</td></tr><tr><td>0.455</td><td>28.6</td><td>29.2</td><td>9.9</td><td>38.5</td><td>39.1</td><td>VB</td><td>66</td><td>79</td><td>27.5</td><td>39.9</td></tr><tr><td>14.0981</td><td>38.7</td><td>38.3</td><td>10.2</td><td>48.9</td><td>48.5</td><td>VB</td><td>60</td><td>73</td><td>11.1</td><td>24.5</td></tr><tr><td>15.0066</td><td>39.6</td><td>39.2</td><td>10.2</td><td>49.8</td><td>49.4</td><td>VB</td><td>60</td><td>73</td><td>10.2</td><td>23.6</td></tr></table>											Frequency [MHz]	Meter Reading (Ave.) [dBuV]	Meter Reading (QP) [dBuV]	Factor [dB]	Level(Ave.) [dBuV]	Level(QP) [dBuV]	Line	Limit(Ave.) [dBuV]	Limit(QP) [dBuV]	Margin(Ave.) [dB]	Margin(QP) [dB]	15.4599	38.9	39.1	10.2	49.1	49.3	VA	60	73	10.9	23.7	16.3687	41.2	41.7	10.2	51.4	51.9	VA	60	73	8.6	21.1	0.2082	22.2	29	9.8	32	38.8	VB	66	79	34	40.2	0.455	28.6	29.2	9.9	38.5	39.1	VB	66	79	27.5	39.9	14.0981	38.7	38.3	10.2	48.9	48.5	VB	60	73	11.1	24.5	15.0066	39.6	39.2	10.2	49.8	49.4	VB	60	73	10.2	23.6
Frequency [MHz]	Meter Reading (Ave.) [dBuV]	Meter Reading (QP) [dBuV]	Factor [dB]	Level(Ave.) [dBuV]	Level(QP) [dBuV]	Line	Limit(Ave.) [dBuV]	Limit(QP) [dBuV]	Margin(Ave.) [dB]	Margin(QP) [dB]																																																																													
15.4599	38.9	39.1	10.2	49.1	49.3	VA	60	73	10.9	23.7																																																																													
16.3687	41.2	41.7	10.2	51.4	51.9	VA	60	73	8.6	21.1																																																																													
0.2082	22.2	29	9.8	32	38.8	VB	66	79	34	40.2																																																																													
0.455	28.6	29.2	9.9	38.5	39.1	VB	66	79	27.5	39.9																																																																													
14.0981	38.7	38.3	10.2	48.9	48.5	VB	60	73	11.1	24.5																																																																													
15.0066	39.6	39.2	10.2	49.8	49.4	VB	60	73	10.2	23.6																																																																													
RADIATED EMISSION																																																																																							
Model Name : CES24120-6			Temp. : 25degC																																																																																				
Model No. :			Humi. : 45%																																																																																				
Serial No. :			Date : 2007/8/6 18:17																																																																																				
Points : 5			Test Equip. : R3132,ESPC																																																																																				
Detector : PEAK/QP			Load Line :																																																																																				
Polarization : Hori. & Vert.			Comment :																																																																																				
Power Supply : DC 24V																																																																																							
Limit: [EN 55022] Class A<3m>																																																																																							
							Vin:DC24V Vo:12V Io:6A																																																																																
<table><tr><th>Frequency [MHz]</th><th>MeterReading (QP) [dBuV]</th><th>Ant. Type</th><th>Antenna Factor [dB/m]</th><th>Cable & Preamp [dB]</th><th>Level(QP) [dBuV/m]</th><th>Angle [°]</th><th>Height [cm]</th><th>Polar.</th><th>Limit [dBuV/m]</th><th>Margin [dB]</th></tr><tr><td>146.788</td><td>51.1</td><td>BL</td><td>10.7</td><td>-28.2</td><td>33.6</td><td>2</td><td>160</td><td>Hori.</td><td>50</td><td>16.4</td></tr><tr><td>158.596</td><td>50.6</td><td>BL</td><td>10</td><td>-27.1</td><td>33.5</td><td>3</td><td>159</td><td>Hori.</td><td>50</td><td>16.5</td></tr><tr><td>48.629</td><td>53.7</td><td>BL</td><td>8.4</td><td>-27.3</td><td>34.8</td><td>80</td><td>112</td><td>Vert.</td><td>50</td><td>15.2</td></tr><tr><td>47.721</td><td>50.1</td><td>BL</td><td>8.8</td><td>-27.5</td><td>31.4</td><td>81</td><td>100</td><td>Vert.</td><td>50</td><td>18.6</td></tr><tr><td>54.085</td><td>52.2</td><td>BL</td><td>6</td><td>-26.3</td><td>31.9</td><td>63</td><td>115</td><td>Vert.</td><td>50</td><td>18.1</td></tr></table>											Frequency [MHz]	MeterReading (QP) [dBuV]	Ant. Type	Antenna Factor [dB/m]	Cable & Preamp [dB]	Level(QP) [dBuV/m]	Angle [°]	Height [cm]	Polar.	Limit [dBuV/m]	Margin [dB]	146.788	51.1	BL	10.7	-28.2	33.6	2	160	Hori.	50	16.4	158.596	50.6	BL	10	-27.1	33.5	3	159	Hori.	50	16.5	48.629	53.7	BL	8.4	-27.3	34.8	80	112	Vert.	50	15.2	47.721	50.1	BL	8.8	-27.5	31.4	81	100	Vert.	50	18.6	54.085	52.2	BL	6	-26.3	31.9	63	115	Vert.	50	18.1											
Frequency [MHz]	MeterReading (QP) [dBuV]	Ant. Type	Antenna Factor [dB/m]	Cable & Preamp [dB]	Level(QP) [dBuV/m]	Angle [°]	Height [cm]	Polar.	Limit [dBuV/m]	Margin [dB]																																																																													
146.788	51.1	BL	10.7	-28.2	33.6	2	160	Hori.	50	16.4																																																																													
158.596	50.6	BL	10	-27.1	33.5	3	159	Hori.	50	16.5																																																																													
48.629	53.7	BL	8.4	-27.3	34.8	80	112	Vert.	50	15.2																																																																													
47.721	50.1	BL	8.8	-27.5	31.4	81	100	Vert.	50	18.6																																																																													
54.085	52.2	BL	6	-26.3	31.9	63	115	Vert.	50	18.1																																																																													

DATA SHEET		Date	Aug 6,2007
Model	Circuit used for measurement	Temp.	25 degreeC
Test	EMI Line conduction & Radiated emission	Humid.	45 %RH
		Tested by	T.Mizuhara

1. Line conduction



2. Radiated emission



Conditions

Test : EMI

Model Name : CES24

Photographs of Test Set-Up

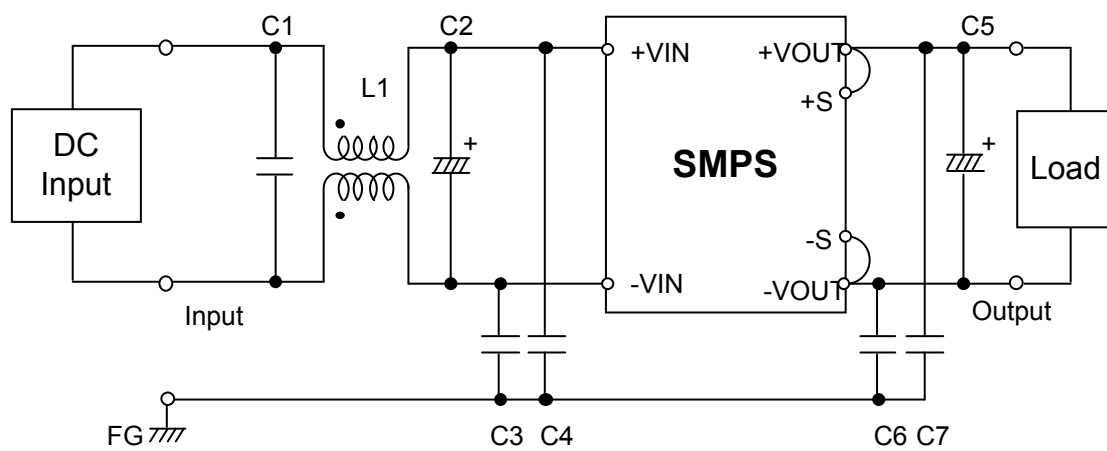
LINE CONDUCTION



RADIATED EMISSION



Testing circuitry



L1	: SC-10-10J	NEC/TOKIN	or equivalent.
C1	: 2.2 μ F 100V	Film capacitor	
C2	: 220 μ F 50V	Electric capacitor	
C3,4	: 0.068 μ F 630V	Film capacitor	
C5	: 10 μ F 25V	Electric capacitor	
C6,7	: 0.033 μ F 630V	Film capacitor	