

## RADIATED EMISSION

Model Name : CBS504824

Model No. :

Serial No. :

Points : 4

Detector : PEAK/QP

Polarization : Hori. &amp; Vert.

Tested by : K.Kinoshita

Temp. : 25degC

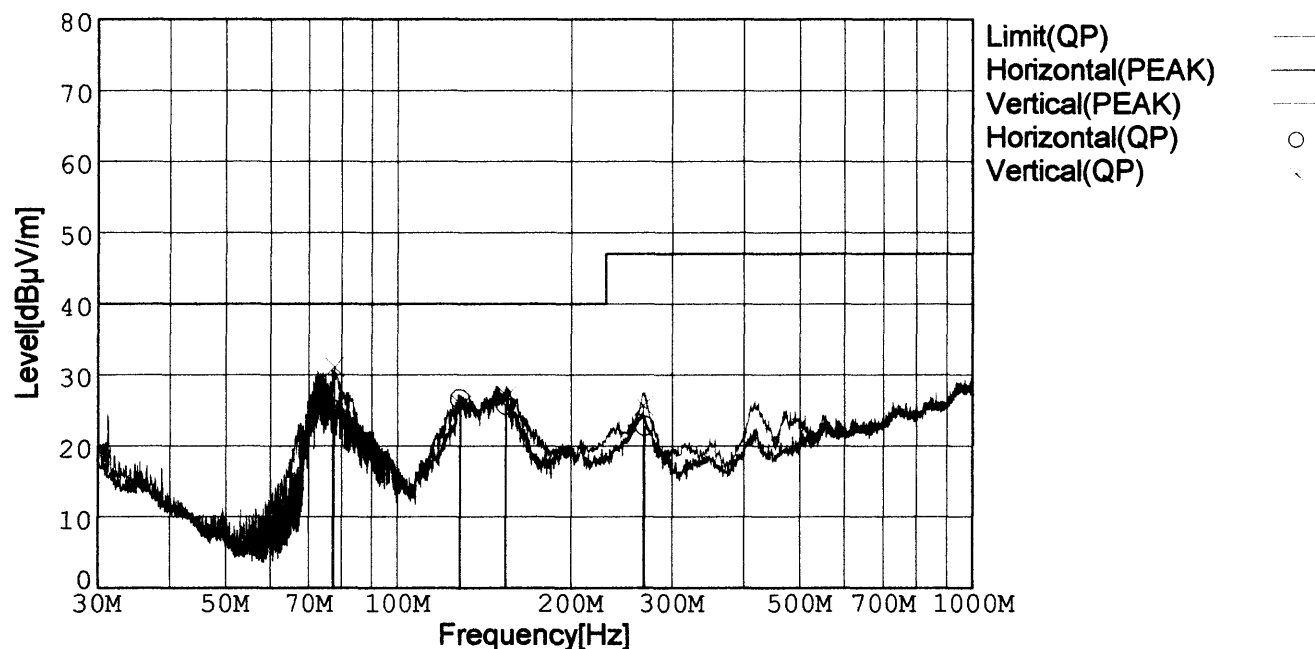
Humi. : 40%

Date : 2001/3/6 18:10

Test Equip. : R3132,ESPC

Comment : DC48V Io=2.1A

Limit: [EN 55022] Class B&lt;3m&gt;



Frequency [MHz]	Meter Reading (QP) [dBμV]	Ant. Type	Antenna Factor [dB/m]	Cable & Preamp [dB]	Level (QP) [dBμV/m]	Angle[°]	Height [cm]	Polar.	Limit [dBμV/m]	Margin [dB]
77.050	50.2	BL	6.6	-31.7	25.1	266	158	Hori.	40.0	14.9
128.454	46.8	BL	11.2	-31.5	26.5	287	156	Hori.	40.0	13.5
153.977	46.9	BL	10.3	-31.4	25.8	304	155	Hori.	40.0	14.2
268.702	41.0	BL	12.7	-30.9	22.8	103	100	Hori.	47.0	24.2
77.627	56.1	BL	6.7	-31.7	31.1	174	130	Vert.	40.0	8.9
129.068	46.0	BL	11.2	-31.5	25.7	355	152	Vert.	40.0	14.3
154.615	48.1	BL	10.3	-31.4	27.0	327	147	Vert.	40.0	13.0
267.461	43.8	BL	12.8	-30.9	25.7	162	135	Vert.	47.0	21.3

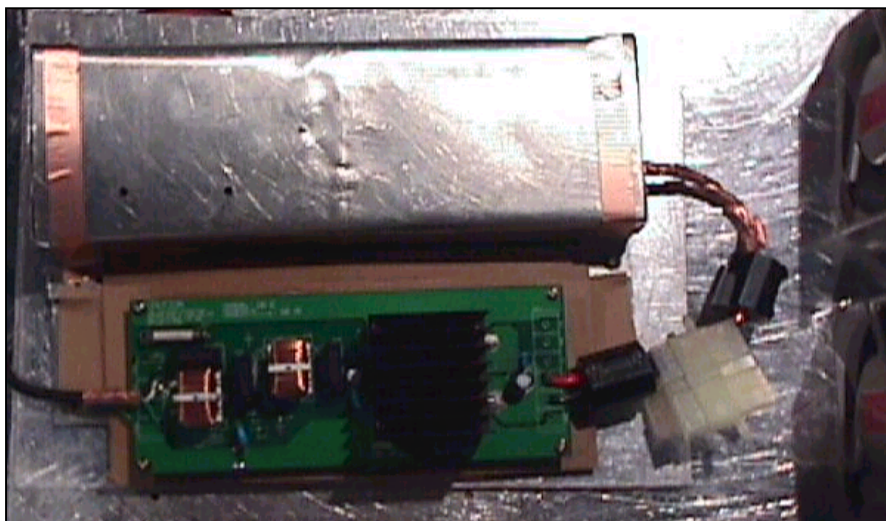
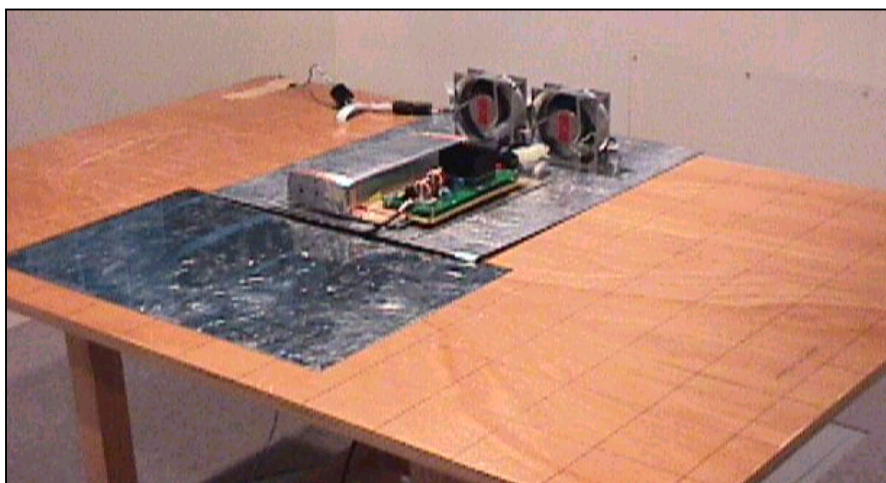
BL: Biconi-Log

## Conditions

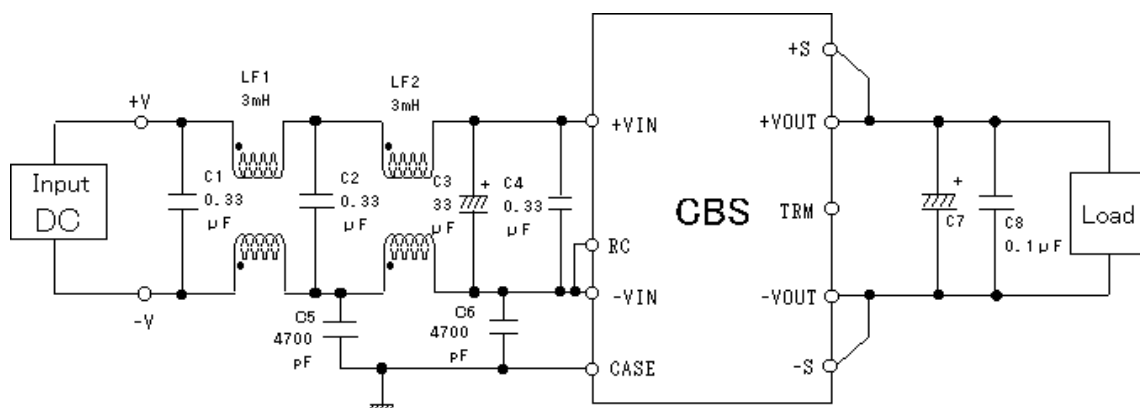
Date 2001/3/7

Test : RADIATED EMISSION  
 Model Name : CBS5048

## ○Photographs of Test Set-Up



## ○Testing circuitry



L1, L2 : SC-05-30J (TOKIN)  
 C1, C2, C4 : CFJC22E334M (Nitsuko)  
 C3 : 100V 33 μF PMseries (nichicon)  
 C5, C6 : DE1307-640E472M-KH (MURATA)  
 C7 : CBS504803,05 10V 2200 μF LXZseries (NIPPON CHEMI-CON)  
       CBS504812,15 25V 470 μF LXZseries (NIPPON CHEMI-CON)  
       CBS504824,28 35V 220 μF LXZseries (NIPPON CHEMI-CON)  
 C8 : MDD21H104M (Nitsuko)

Fig. Testing circuitry



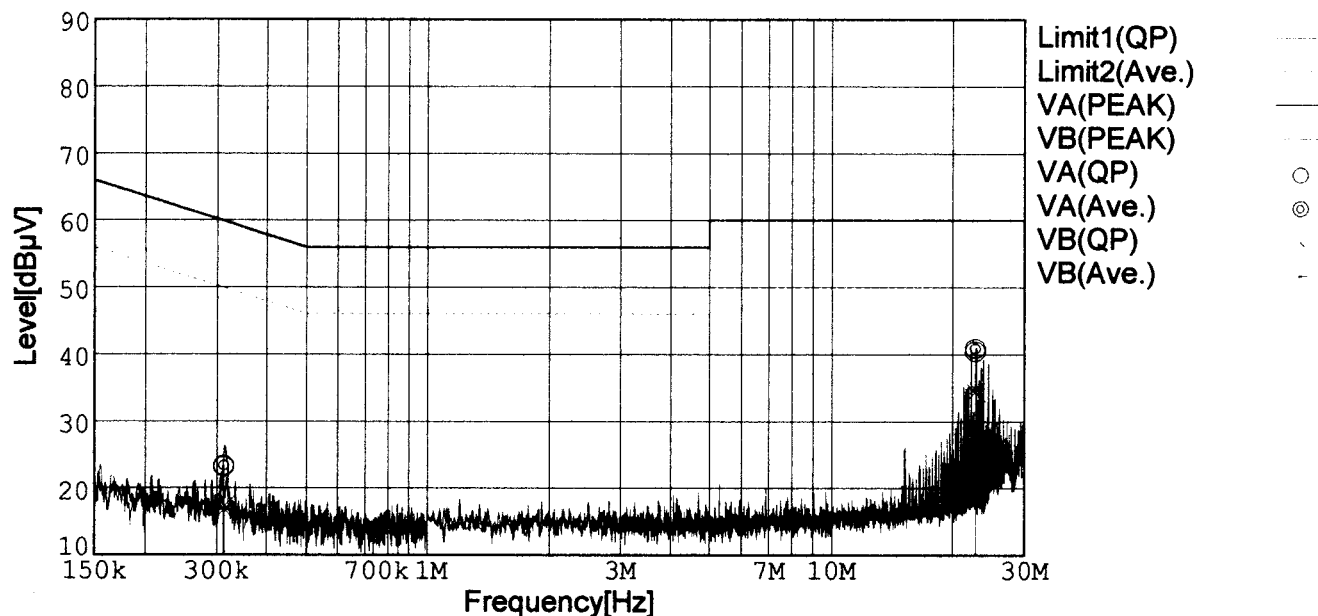
# LINE CONDUCTION

Model Name : CBS504824  
 Model No. :  
 Serial No. :  
 Points : 2  
 Detector : PEAK/QP/Ave.  
 Line Mode : VA/VB

Tested by : K.Kinoshita  
 Temp. : 25degC  
 Humi. : 40%  
 Date : 2001/3/6 18:58  
 Test Equip. : R3132,ESPC  
 Comment : DC48V Io=2.1A

Limit1: [EN 55022] Class B(QP)

Limit2: [EN 55022] Class B(Ave.)



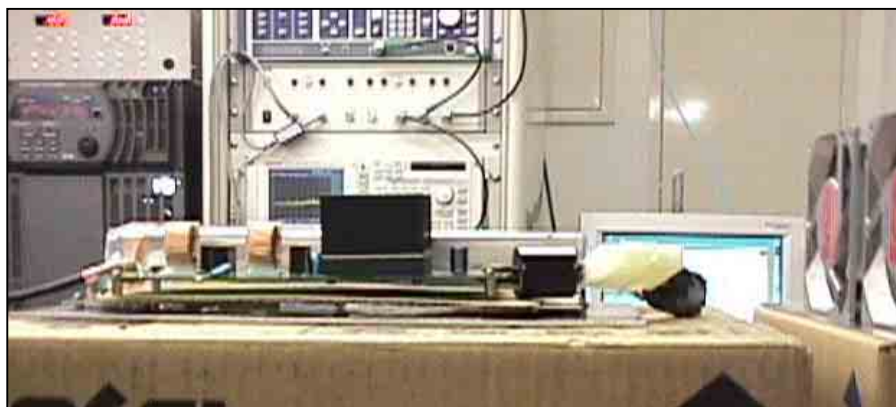
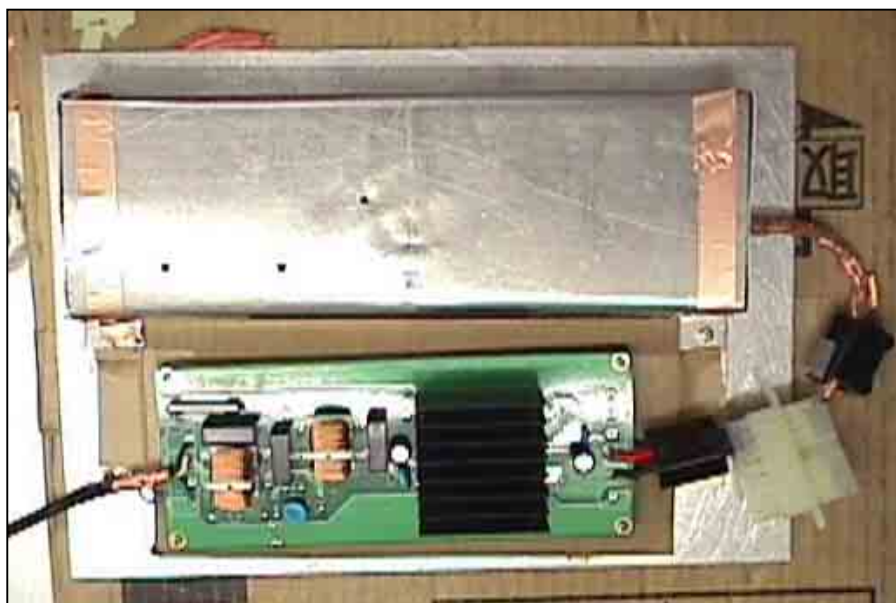
Frequency [MHz]	Meter Reading (QP) [dBμV]	Meter Reading (Ave.) [dBμV]	Factor [dB]	Level (QP) [dBμV]	Level (Ave.) [dBμV]	Line	Limit (QP) [dBμV]	Limit (Ave.) [dBμV]	Margin (QP)[dB]	Margin (Ave.) [dB]
0.3116	13.4	13.6	9.8	23.2	23.4	VA	59.9	49.9	36.7	26.5
22.7344	30.1	30.6	10.3	40.4	40.9	VA	60.0	50.0	19.6	9.1
0.3125	7.5	6.9	9.8	17.3	16.7	VB	59.9	49.9	42.6	33.2
22.7320	24.1	24.6	10.3	34.4	34.9	VB	60.0	50.0	25.6	15.1

# Conditions

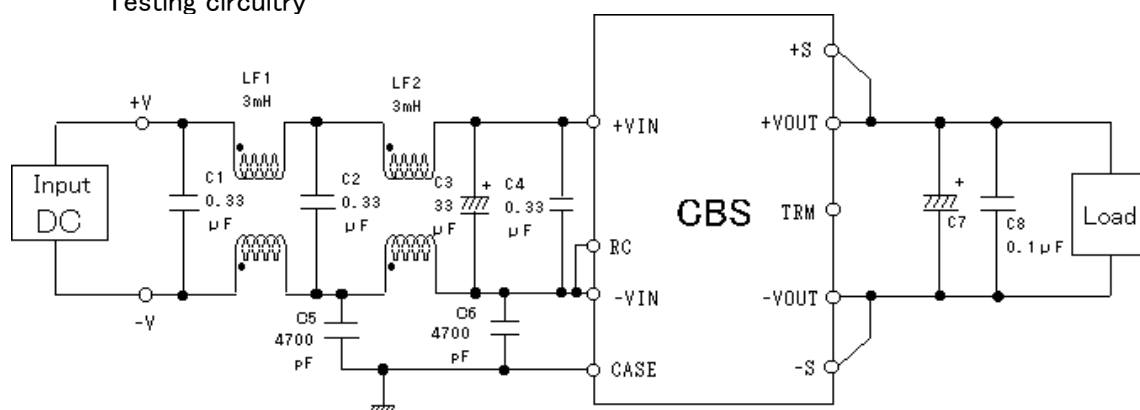
Date 2001/3/7

Test : LINE CONDUCTION  
Model Name : CBS5048

## Photographs of Test Set-Up



## Testing circuitry



L1, L2 : SC-05-30J (TOKIN)  
C1, C2, C4 : CFJC22E334M (Nitsuko)  
C3 : 100V 33 $\mu$ F PMseries (nichicon)  
C5, C6 : DE1307-640E472M-KH (MURATA)  
C7 : CBS504803,05 10V 2200 $\mu$ F LXZseries (NIPPON CHEMI-CON)  
CBS504812,15 25V 470 $\mu$ F LXZseries (NIPPON CHEMI-CON)  
CBS504824,28 35V 220 $\mu$ F LXZseries (NIPPON CHEMI-CON)  
C8 : MDD21H104M (Nitsuko)

Fig. Testing circuitry