



RADIATED EMISSION

Model Name : CBS504815

Model No. :

Serial No. :

Points : 3

Detector : PEAK/QP

Polarization : Hori. & Vert.

Limit: [EN 55022] Class B<3m>

Tested by : K.Kinoshita

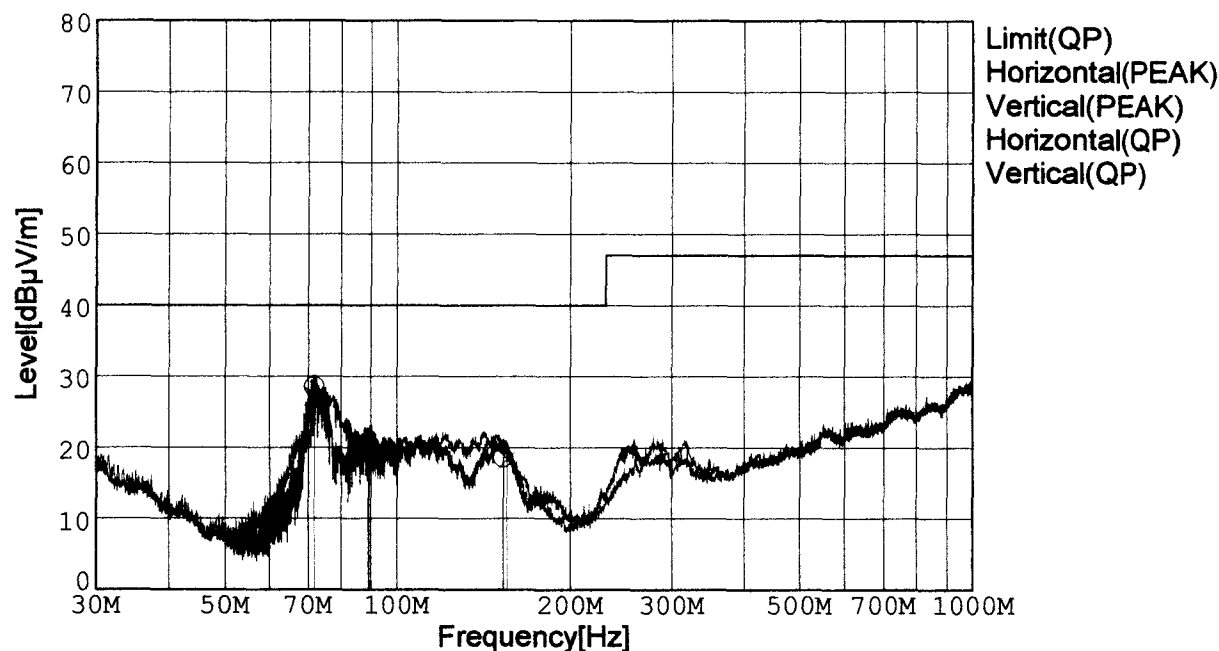
Temp. : 25degC

Humi. : 40%

Date : 2001/3/7 14:24

Test Equip. : R3132,ESPC

Comment : DC48V Io=3.4A



Frequency [MHz]	Meter Reading (QP) [dBμV]	Ant. Type	Antenna Factor [dB/m]	Cable & Preamp [dB]	Level (QP) [dBμV/m]	Angle[°]	Height [cm]	Polar.	Limit [dBμV/m]	Margin [dB]
71.749	54.6	BL	5.7	-31.8	28.5	110	157	Hori.	40.0	11.5
89.377	43.6	BL	8.4	-31.7	20.3	78	152	Hori.	40.0	19.7
153.120	39.6	BL	10.4	-31.4	18.6	303	153	Hori.	40.0	21.4
71.694	53.3	BL	5.7	-31.8	27.2	359	107	Vert.	40.0	12.8
89.083	42.2	BL	8.4	-31.7	18.9	198	132	Vert.	40.0	21.1
155.553	39.4	BL	10.2	-31.3	18.3	354	159	Vert.	40.0	21.7

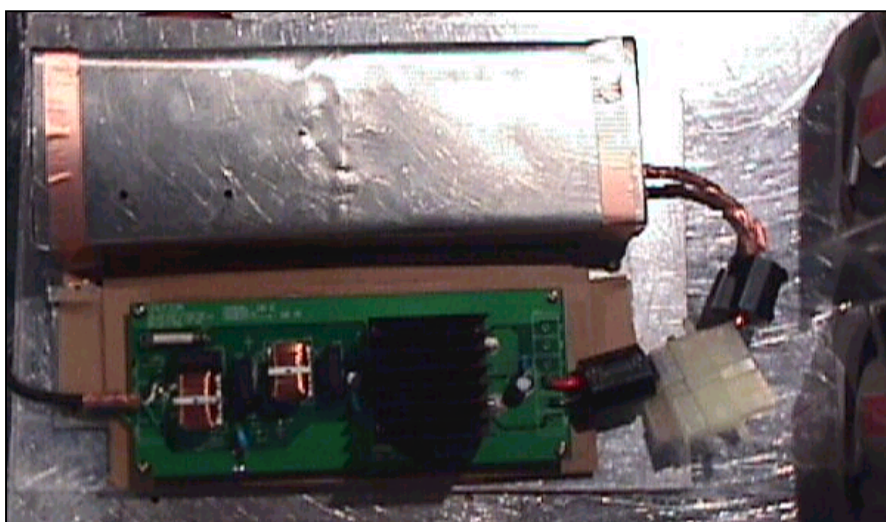
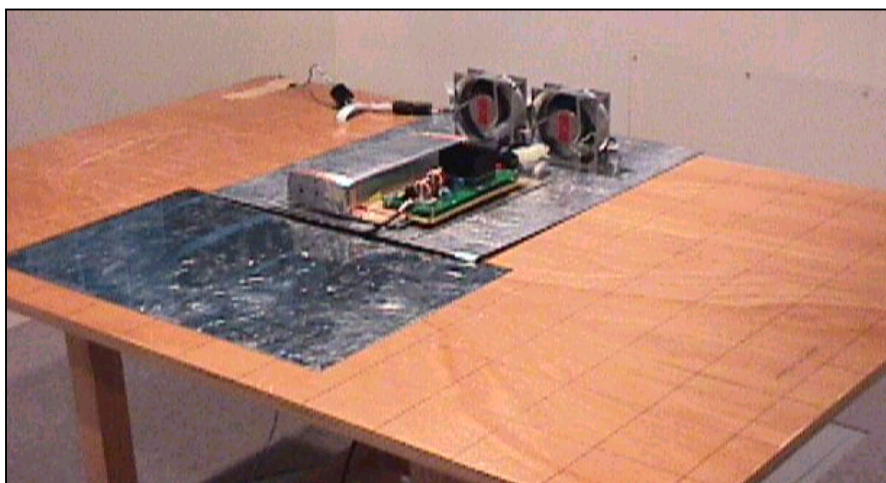
BL: Biconi-Log

Conditions

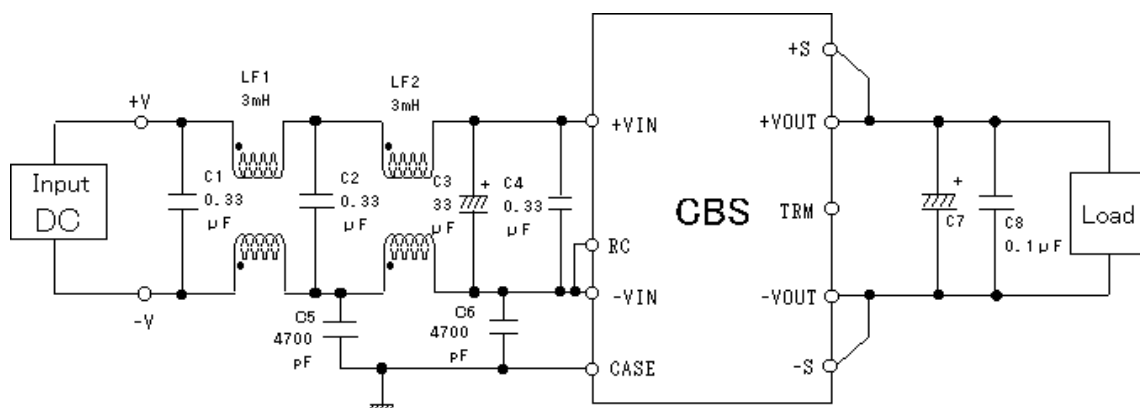
Date 2001/3/7

Test : RADIATED EMISSION
 Model Name : CBS5048

○Photographs of Test Set-Up



○Testing circuitry



L1, L2 : SC-05-30J (TOKIN)
 C1, C2, C4 : CFJC22E334M (Nitsuko)
 C3 : 100V 33 μF PMseries (nichicon)
 C5, C6 : DE1307-640E472M-KH (MURATA)
 C7 : CBS504803,05 10V 2200 μF LXZseries (NIPPON CHEMI-CON)
 CBS504812,15 25V 470 μF LXZseries (NIPPON CHEMI-CON)
 CBS504824,28 35V 220 μF LXZseries (NIPPON CHEMI-CON)
 C8 : MDD21H104M (Nitsuko)

Fig. Testing circuitry



LINE CONDUCTION

Model Name : CBS504815

Model No. :

Serial No. :

Points : 2

Detector : PEAK/QP/Ave.

Line Mode : VA/VB

Limit1: [EN 55022] Class B(QP)

Limit2: [EN 55022] Class B(Ave.)

Tested by : K.Kinoshita

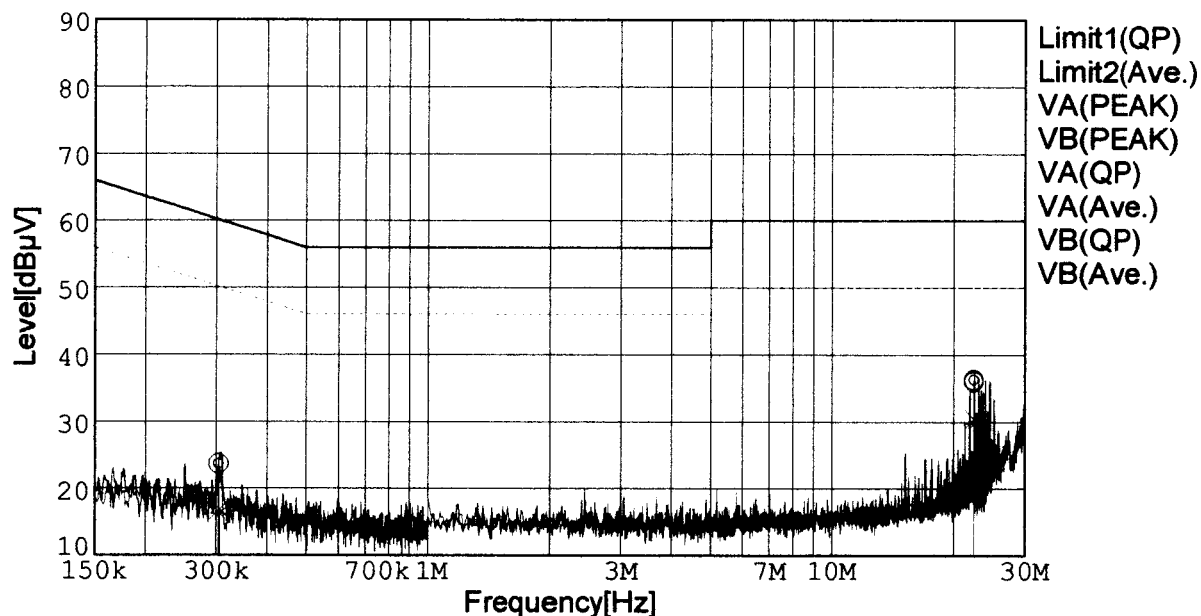
Temp. : 25degC

Humi. : 40%

Date : 2001/3/7 14:06

Test Equip. : R3132,ESPC

Comment : DC48V Io=3.4A



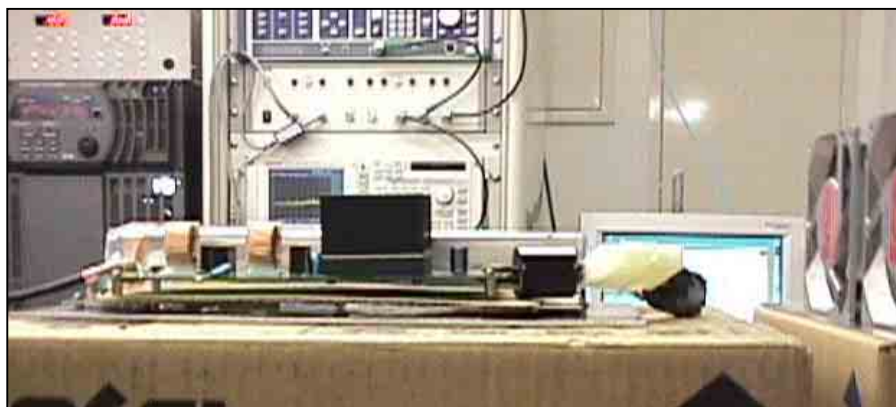
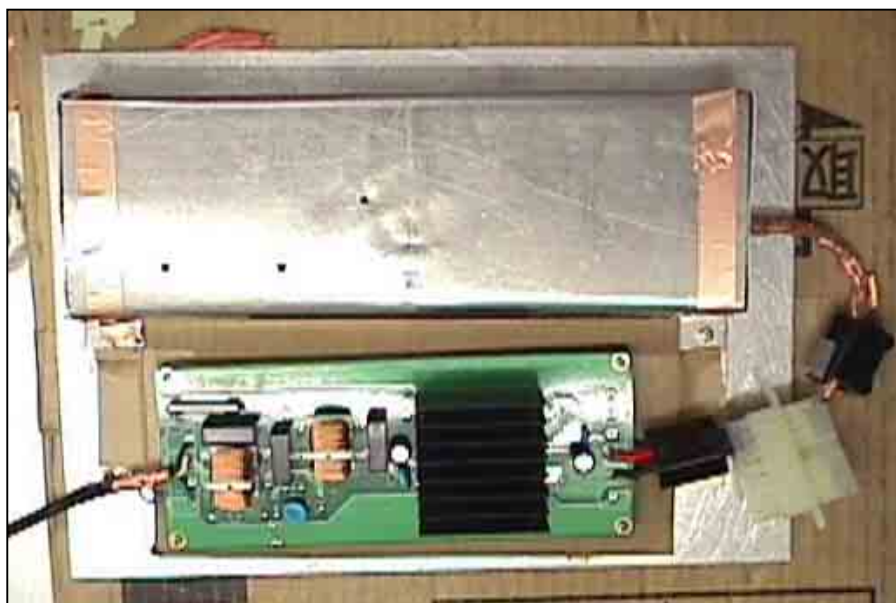
Frequency [MHz]	Meter Reading (QP) [dBμV]	Meter Reading (Ave.) [dBμV]	Factor [dB]	Level (QP) [dBμV]	Level (Ave.) [dBμV]	Line	Limit (QP) [dBμV]	Limit (Ave.) [dBμV]	Margin (QP)[dB]	Margin (Ave.) [dB]
0.3045	13.8	13.9	9.8	23.6	23.7	VA	60.1	50.1	36.5	26.4
22.5275	25.7	26.0	10.3	36.0	36.3	VA	60.0	50.0	24.0	13.7
0.3063	7.0	6.4	9.8	16.8	16.2	VB	60.1	50.1	43.3	33.9
22.5293	20.1	19.4	10.3	30.4	29.7	VB	60.0	50.0	29.6	20.3

Conditions

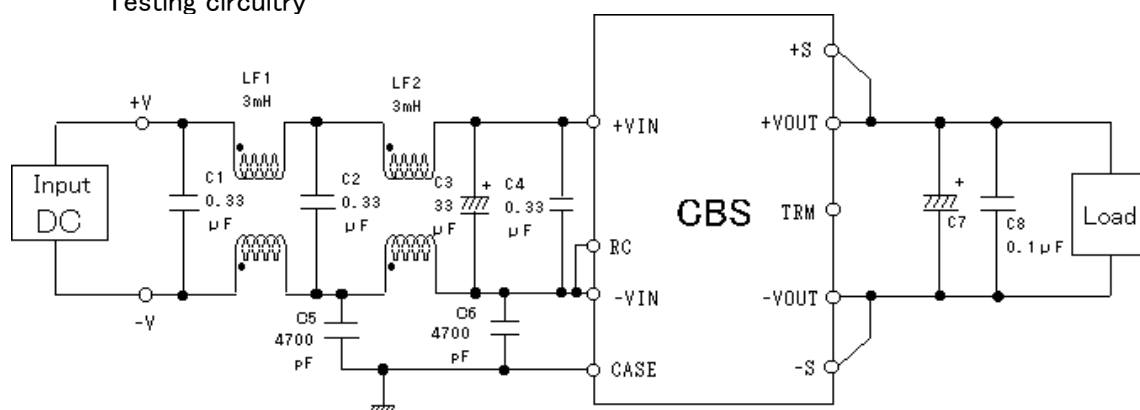
Date 2001/3/7

Test : LINE CONDUCTION
Model Name : CBS5048

Photographs of Test Set-Up



Testing circuitry



L1, L2 : SC-05-30J (TOKIN)
C1, C2, C4 : CFJC22E334M (Nitsuko)
C3 : 100V 33 μF PMseries (nichicon)
C5, C6 : DE1307-640E472M-KH (MURATA)
C7 : CBS504803,05 10V 2200 μF LXZseries (NIPPON CHEMI-CON)
CBS504812,15 25V 470 μF LXZseries (NIPPON CHEMI-CON)
CBS504824,28 35V 220 μF LXZseries (NIPPON CHEMI-CON)
C8 : MDD21H104M (Nitsuko)

Fig. Testing circuitry