



RADIATED EMISSION

Model Name : CBS504805

Model No. :

Serial No. :

Points : 4

Detector : PEAK/QP

Polarization : Hori. & Vert.

Tested by : K.Kinoshita

Temp. : 25degC

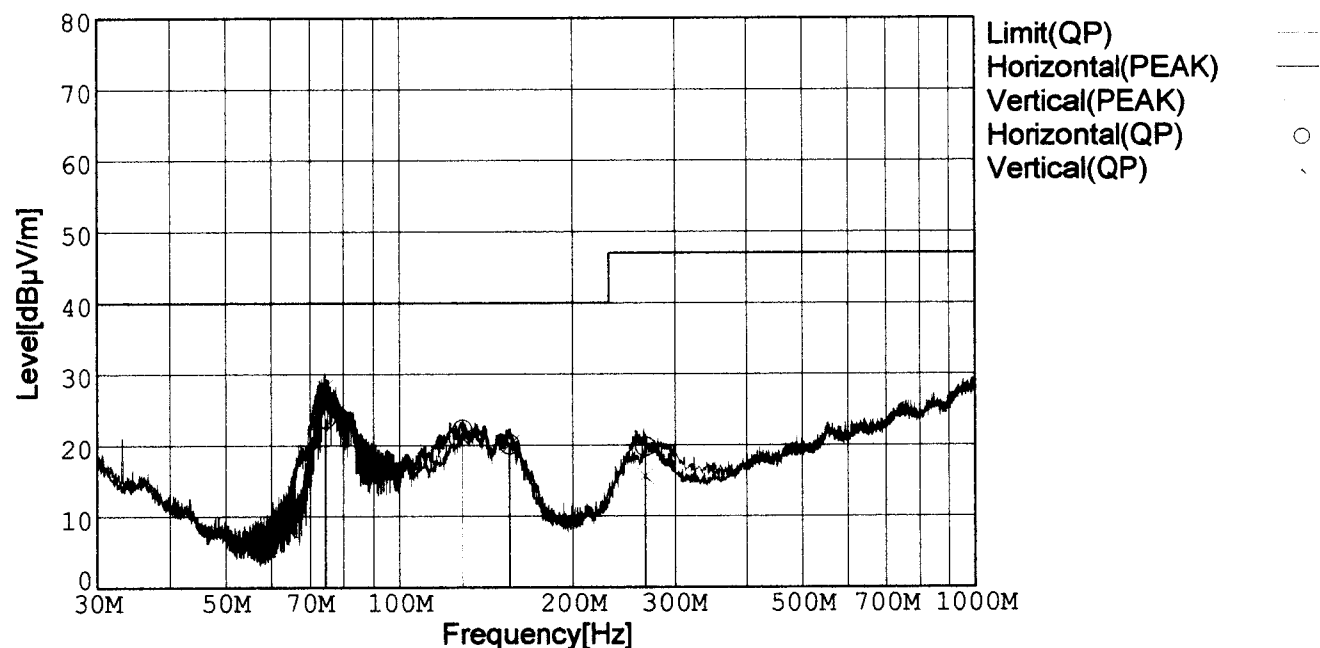
Humi. : 40%

Date : 2001/3/2 14:38

Test Equip. : R3132,ESPC

Comment : DC48V Io=10A

Limit: [EN 55022] Class B<3m>



Frequency [MHz]	Meter Reading (QP) [dBμV]	Ant. Type	Antenna Factor [dB/m]	Cable & Preamp [dB]	Level (QP) [dBμV/m]	Angle[°]	Height [cm]	Polar.	Limit [dBμV/m]	Margin [dB]
74.638	49.2	BL	6.3	-31.7	23.8	296	135	Hori.	40.0	16.2
128.387	42.5	BL	11.2	-31.5	22.2	103	154	Hori.	40.0	17.8
154.585	41.2	BL	10.3	-31.4	20.1	279	143	Hori.	40.0	19.9
267.684	37.9	BL	12.8	-30.9	19.8	268	104	Hori.	47.0	27.2
74.349	53.5	BL	6.3	-31.7	28.1	242	138	Vert.	40.0	11.9
128.389	41.3	BL	11.2	-31.5	21.0	358	158	Vert.	40.0	19.0
154.891	41.2	BL	10.3	-31.4	20.1	7	151	Vert.	40.0	19.9
267.313	33.7	BL	12.8	-30.9	15.6	300	146	Vert.	47.0	31.4

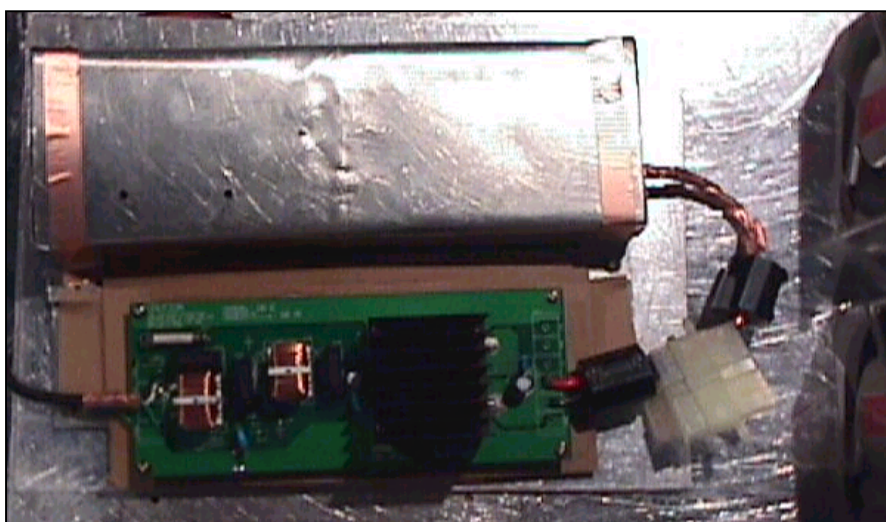
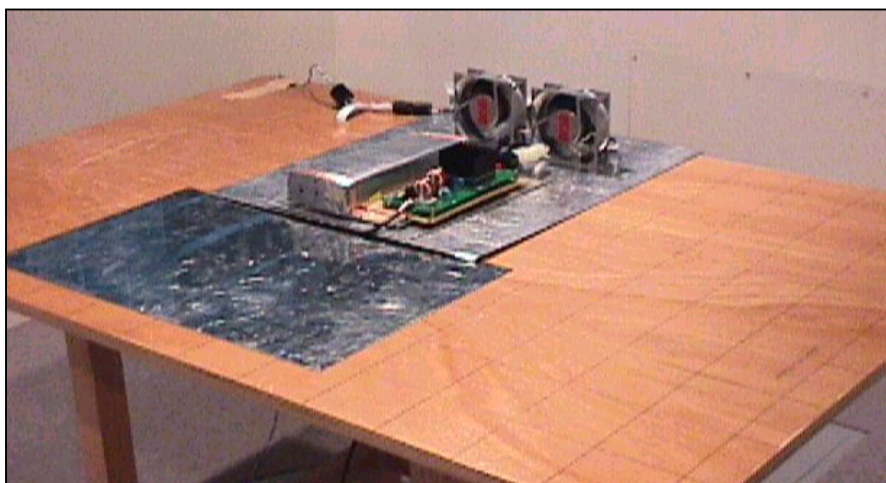
BL: Biconi-Log

Conditions

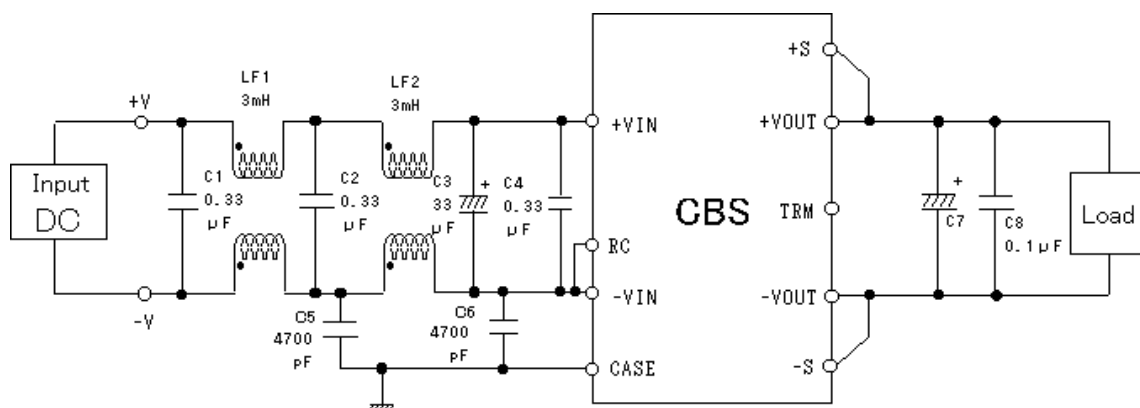
Date 2001/3/7

Test : RADIATED EMISSION
 Model Name : CBS5048

○Photographs of Test Set-Up



○Testing circuitry



L1, L2 : SC-05-30J (TOKIN)
 C1, C2, C4 : CFJC22E334M (Nitsuko)
 C3 : 100V 33 μF PMseries (nichicon)
 C5, C6 : DE1307-640E472M-KH (MURATA)
 C7 : CBS504803,05 10V 2200 μF LXZseries (NIPPON CHEMI-CON)
 CBS504812,15 25V 470 μF LXZseries (NIPPON CHEMI-CON)
 CBS504824,28 35V 220 μF LXZseries (NIPPON CHEMI-CON)
 C8 : MDD21H104M (Nitsuko)

Fig. Testing circuitry



LINE CONDUCTION

Model Name : CBS504805

Model No. :

Serial No. :

Points : 3

Detector : PEAK/QP/Ave.

Line Mode : VA/VB

Limit1: [EN 55022] Class B(QP)

Limit2: [EN 55022] Class B(Ave.)

Tested by : K.Kinoshita

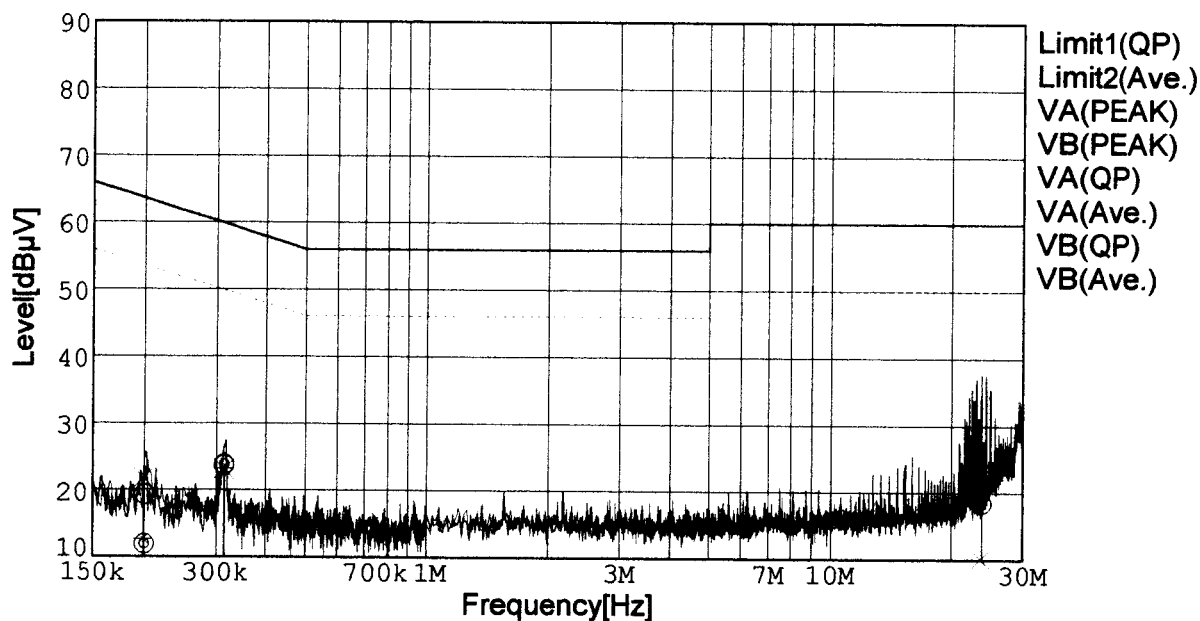
Temp. : 25degC

Humi. : 40%

Date : 2001/3/2 15:10

Test Equip. : R3132,ESPC

Comment : DC48V Io=10A



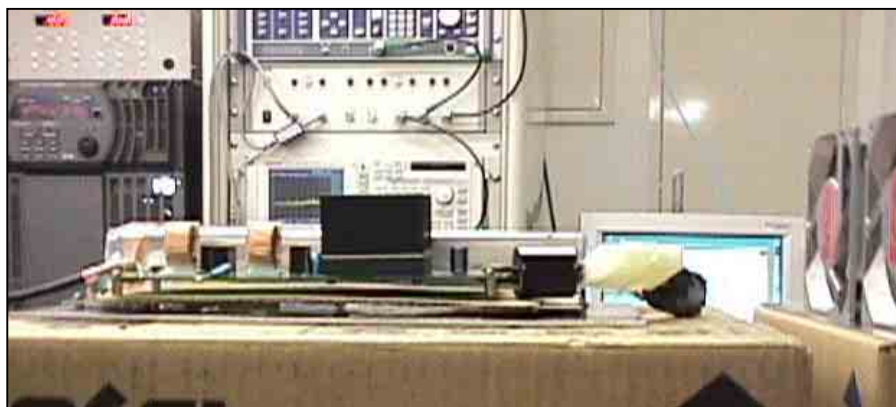
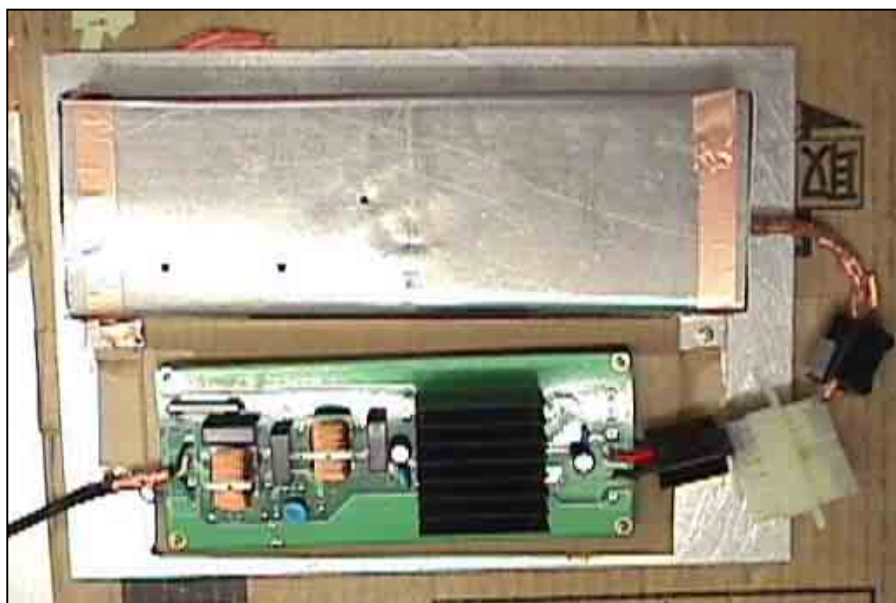
Frequency [MHz]	Meter Reading (QP) [dBμV]	Meter Reading (Ave.) [dBμV]	Factor [dB]	Level (QP) [dBμV]	Level (Ave.) [dBμV]	Line	Limit (QP) [dBμV]	Limit (Ave.) [dBμV]	Margin (QP) [dB]	Margin (Ave.) [dB]
0.2006	9.5	2.1	9.8	19.3	11.9	VA	63.6	53.6	44.3	41.7
0.3141	13.8	14.0	9.8	23.6	23.8	VA	59.9	49.9	36.3	26.1
23.8160	8.1	-1.5	10.3	18.4	8.8	VA	60.0	50.0	41.6	41.2
0.1991	12.0	2.8	9.8	21.8	12.6	VB	63.7	53.7	41.9	41.1
0.3130	13.3	13.4	9.8	23.1	23.2	VB	59.9	49.9	36.8	26.7
23.6398	-0.2	-5.3	10.3	10.1	5.0	VB	60.0	50.0	49.9	45.0

Conditions

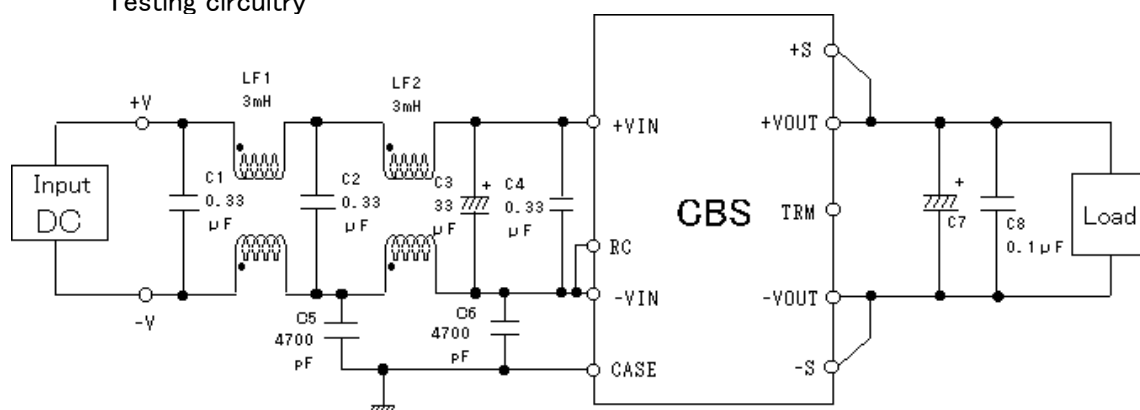
Date 2001/3/7

Test : LINE CONDUCTION
Model Name : CBS5048

Photographs of Test Set-Up



Testing circuitry



L1, L2 : SC-05-30J (TOKIN)
C1, C2, C4 : CFJC22E334M (Nitsuko)
C3 : 100V 33 μF PMseries (nichicon)
C5, C6 : DE1307-640E472M-KH (MURATA)
C7 : CBS504803,05 10V 2200 μF LXZseries (NIPPON CHEMI-CON)
CBS504812,15 25V 470 μF LXZseries (NIPPON CHEMI-CON)
CBS504824,28 35V 220 μF LXZseries (NIPPON CHEMI-CON)
C8 : MDD21H104M (Nitsuko)

Fig. Testing circuitry