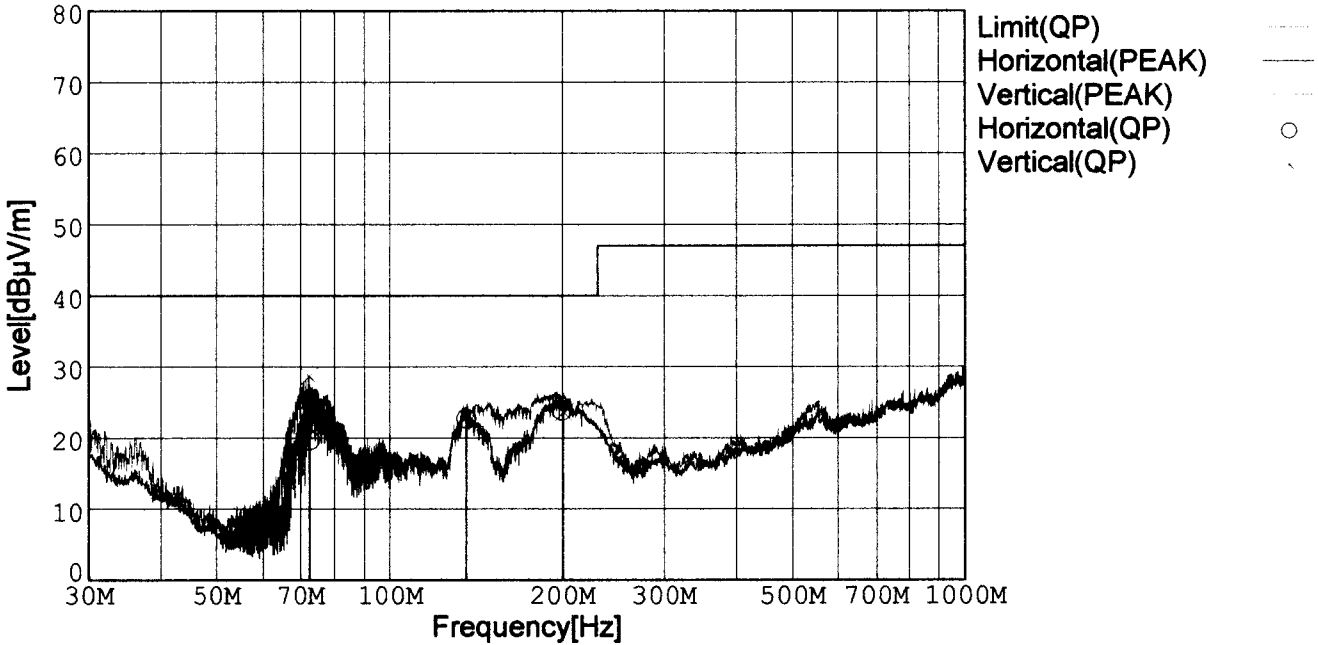




RADIATED EMISSION

Model Name	: CBS2004828	Tested by	: K.Kinoshita
Model No.	:	Temp.	: 25degC
Serial No.	:	Humi.	: 40%
Points	: 3	Date	: 2001/3/1 14:37
Detector	: PEAK/QP	Test Equip.	: R3132,ESPC
Polarization	: Hori. & Vert.	Comment	: DC48V Io=7.2A

Limit: [EN 55022] Class B<3m>



Frequency [MHz]	Meter Reading (QP) [dBμV]	Ant. Type	Antenna Factor [dB/m]	Cable & Preamp [dB]	Level (QP) [dBμV/m]	Angle[°]	Height [cm]	Polar.	Limit [dBμV/m]	Margin [dB]
72.795	45.4	BL	6.0	-31.7	19.7	263	157	Hori.	40.0	20.3
135.947	43.1	BL	11.0	-31.4	22.7	277	152	Hori.	40.0	17.3
199.856	46.5	BL	8.5	-31.2	23.8	165	160	Hori.	40.0	16.2
72.539	54.5	BL	5.9	-31.7	28.7	3	111	Vert.	40.0	11.3
135.461	43.3	BL	11.0	-31.4	22.9	113	131	Vert.	40.0	17.1
200.904	46.2	BL	8.5	-31.1	23.6	274	125	Vert.	40.0	16.4

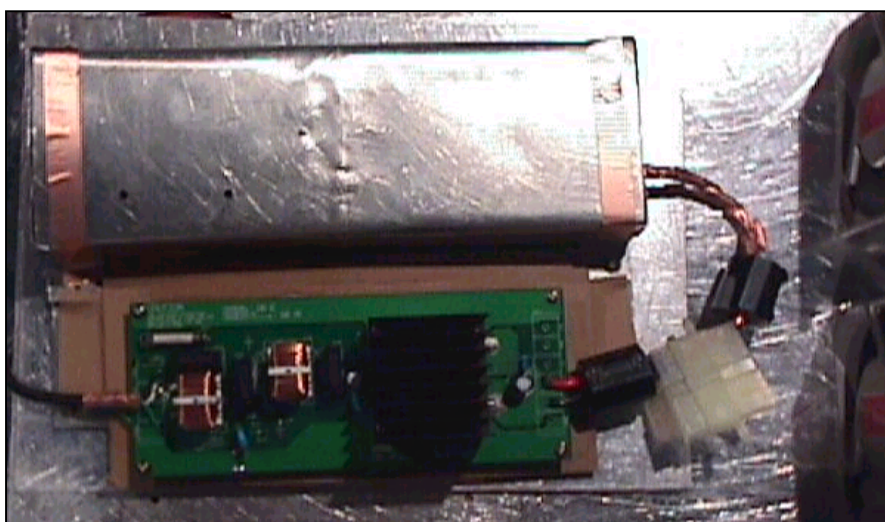
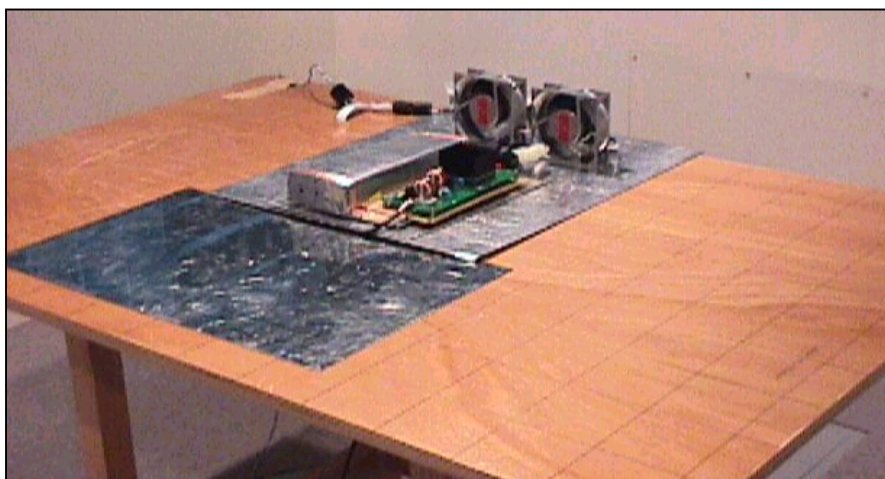
BL: Biconi-Log

Conditions

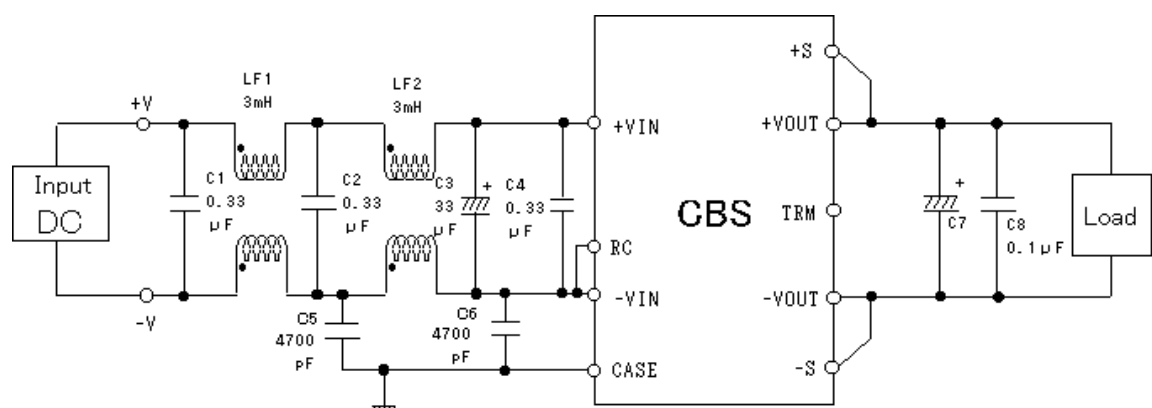
Date 2001/3/7

Test : RADIATED EMISSION
 Model Name : CBS20048

○Photographs of Test Set-Up



○Testing circuitry



L1, L2 : SC-05-30J (TOKIN)
 C1, C2, C4 : CFJC22E334M (Nitsuko)
 C3 : 100V 33 μF PMseries (nichicon)
 C5, C6 : DE1307-640E472M-KH (MURATA)
 C7 : CBS2004803,05 10V 2200 μF LXZseries (NIPPON CHEMI-CON)
 CBS2004812,15 25V 470 μF LXZseries (NIPPON CHEMI-CON)
 CBS2004824,28 35V 220 μF LXZseries (NIPPON CHEMI-CON)
 C8 : MDD21H104M (Nitsuko)

Fig. Testing circuitry

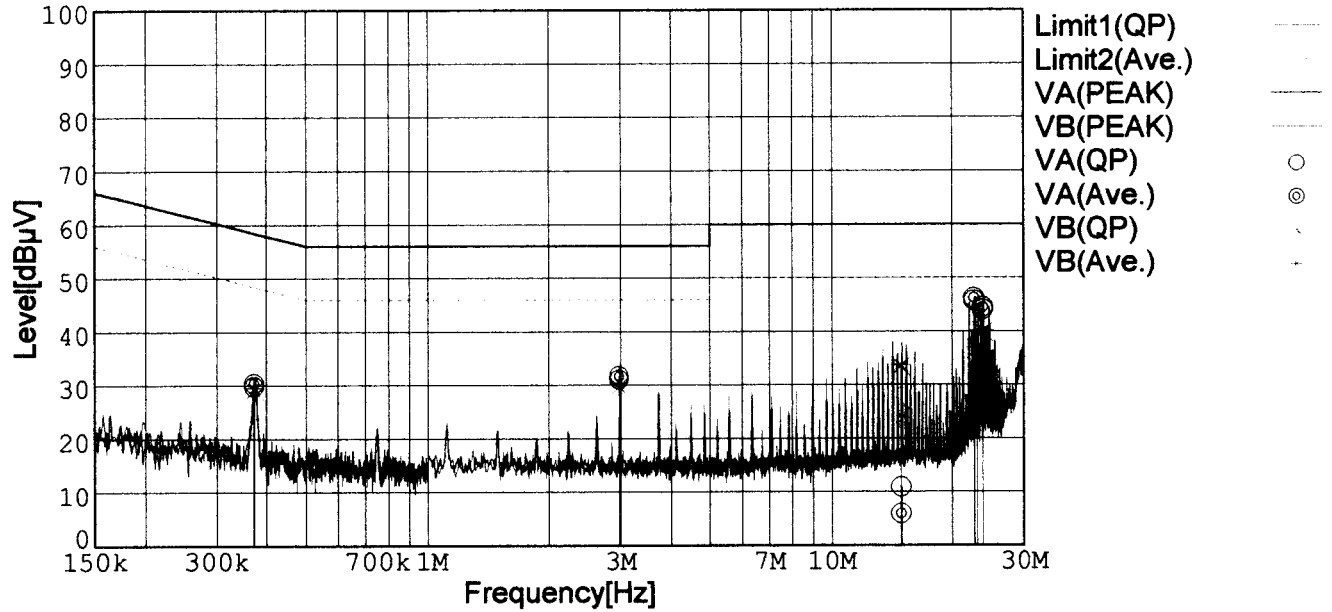


LINE CONDUCTION

Model Name : CBS2004828
 Model No. :
 Serial No. :
 Points : 5
 Detector : PEAK/QP/Ave.
 Line Mode : VA/VB

Tested by : K.Kinoshita
 Temp. : 25degC
 Humi. : 40%
 Date : 2001/3/1 22:45
 Test Equip. : R3132,ESPC
 Comment : DC48V Io=7.2A

Limit1: [EN 55022] Class B(QP)
 Limit2: [EN 55022] Class B(Ave.)



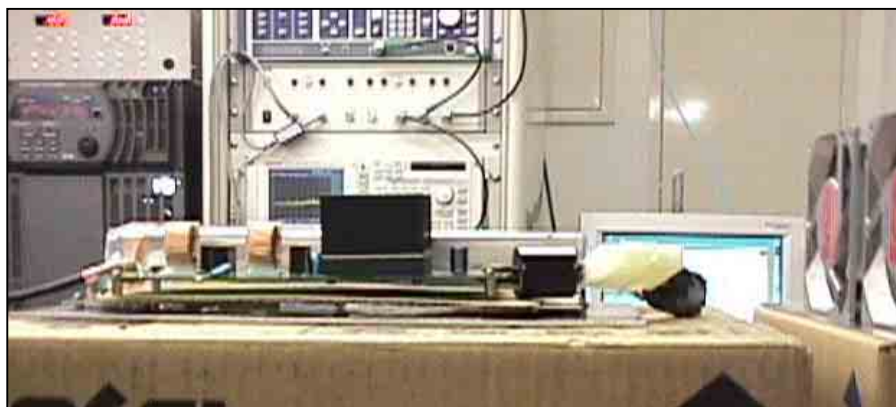
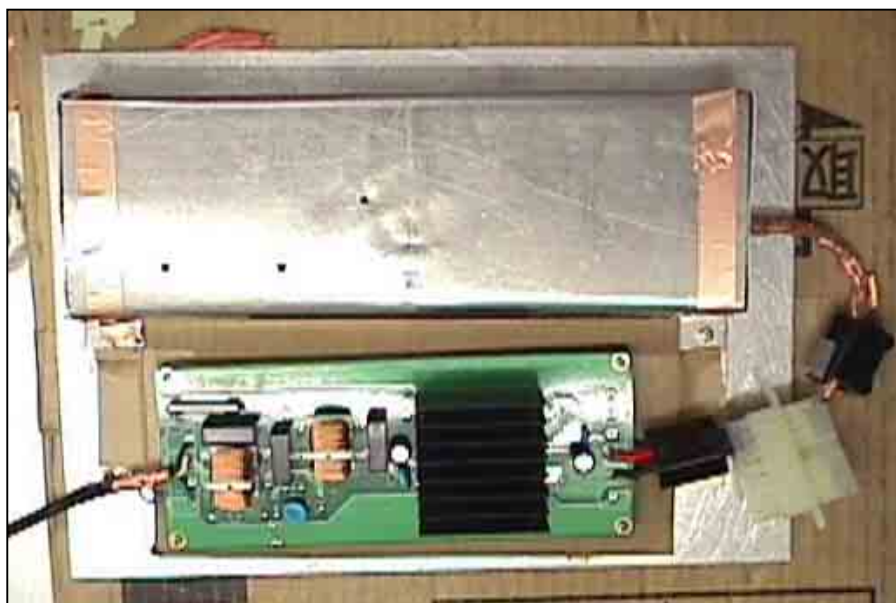
Frequency [MHz]	Meter Reading (QP) [dBμV]	Meter Reading (Ave.) [dBμV]	Factor [dB]	Level (QP) [dBμV]	Level (Ave.) [dBμV]	Line	Limit (QP) [dBμV]	Limit (Ave.) [dBμV]	Margin (QP)[dB]	Margin (Ave.) [dB]
22.5869	35.4	35.9	10.3	45.7	46.2	VA	60.0	50.0	14.3	3.8
23.6902	33.7	34.2	10.3	44.0	44.5	VA	60.0	50.0	16.0	5.5
2.9754	21.1	21.7	9.9	31.0	31.6	VA	56.0	46.0	25.0	14.4
0.3729	20.0	20.5	9.8	29.8	30.3	VA	58.4	48.4	28.6	18.1
14.8384	0.7	-4.3	10.2	10.9	5.9	VA	60.0	50.0	49.1	44.1
23.6902	29.5	29.8	10.3	39.8	40.1	VB	60.0	50.0	20.2	9.9
22.9527	26.4	26.6	10.3	36.7	36.9	VB	60.0	50.0	23.3	13.1
2.9714	19.8	20.5	9.9	29.7	30.4	VB	56.0	46.0	26.3	15.6
14.8173	23.2	23.5	10.2	33.4	33.7	VB	60.0	50.0	26.6	16.3
0.3731	19.3	19.8	9.8	29.1	29.6	VB	58.4	48.4	29.3	18.8

Conditions

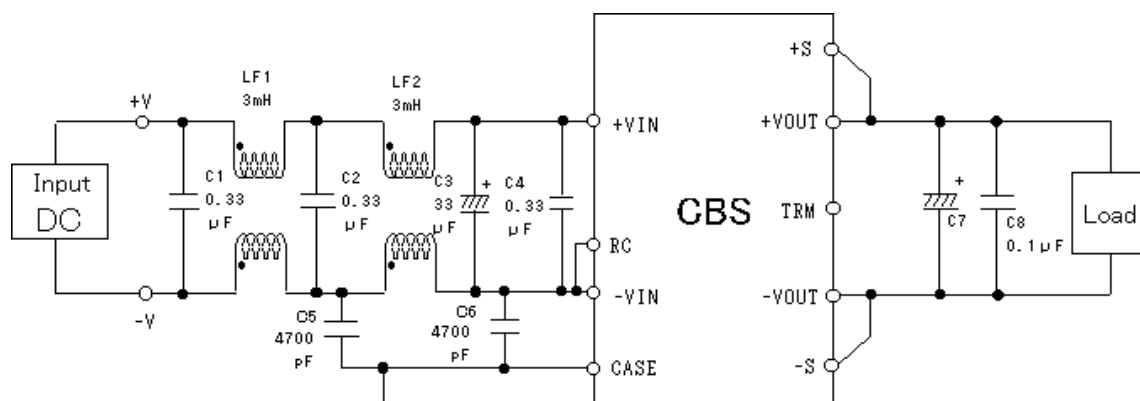
Date 2001/3/7

Test : LINE CONDUCTION
Model Name : CBS20048

Photographs of Test Set-Up



Testing circuitry



- L1, L2 : SC-05-30J (TOKIN)
C1, C2, C4 : CFJC22E334M (Nitsuko)
C3 : 100V 33 μ F PMseries (nichicon)
C5, C6 : DE1307-640E472M-KH (MURATA)
C7 : CBS2004803,05 10V 2200 μ F LXZseries (NIPPON CHEMI-CON)
CBS2004812,15 25V 1000 μ F LXZseries (NIPPON CHEMI-CON)
CBS2004824,28 35V 470 μ F LXZseries (NIPPON CHEMI-CON)
C8 : MDD21H104M (Nitsuko)

Fig. Testing circuitry