



RADIATED EMISSION

Model Name : CBS1002424

Model No. :

Serial No. :

Points : 3

Detector : PEAK/QP

Polarization : Hori. & Vert.

Limit: [EN 55022] Class B<3m>

Tested by : T.Oiwake

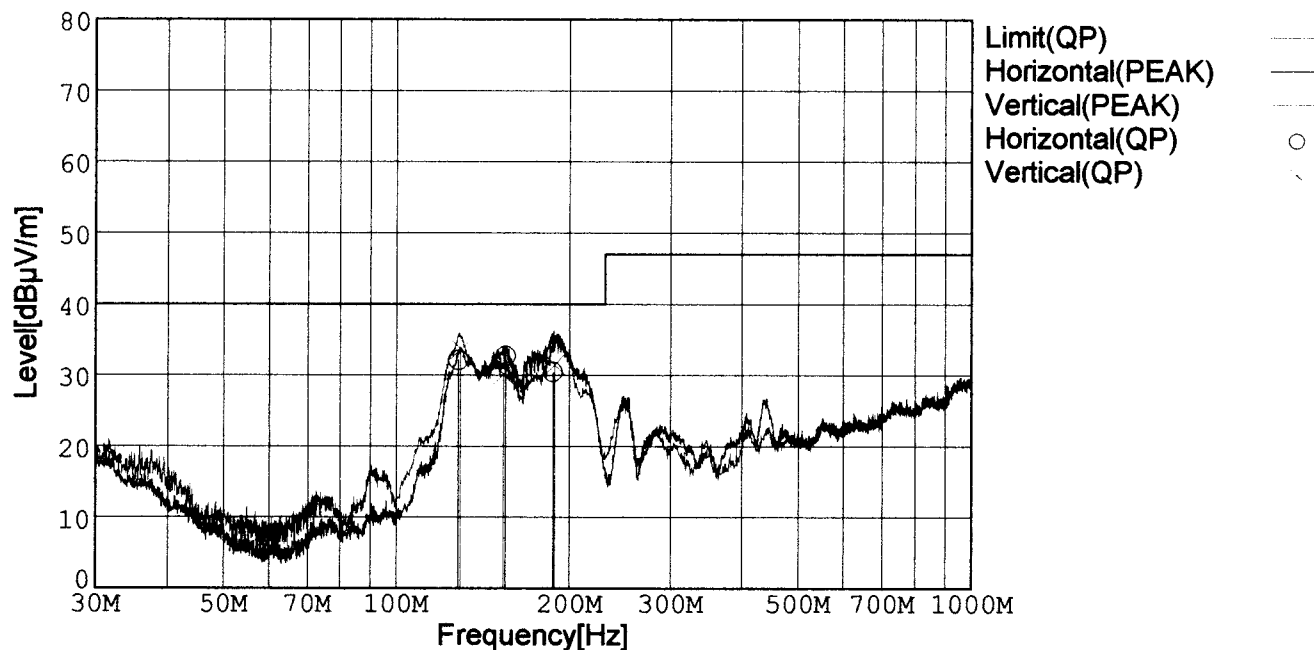
Temp. : 25degC

Humi. : 40%

Date : 2002/7/18 17:18

Test Equip. : R3132,ESPC

Comment : DC 24V, Io=4.2A



Frequency [MHz]	Meter Reading (QP) [dBμV]	Ant. Type	Antenna Factor [dB/m]	Cable & Preamp [dB]	Level (QP) [dBμV/m]	Angle[°]	Height [cm]	Polar.	Limit [dBμV/m]	Margin [dB]
127.933	52.5	BL	11.1	-31.5	32.1	298	160	Hori.	40.0	7.9
154.711	53.8	BL	10.3	-31.4	32.7	283	160	Hori.	40.0	7.3
187.131	53.3	BL	8.3	-31.2	30.4	276	159	Hori.	40.0	9.6
128.954	53.9	BL	11.2	-31.5	33.6	69	159	Vert.	40.0	6.4
153.208	51.1	BL	10.4	-31.4	30.1	85	158	Vert.	40.0	9.9
188.272	54.3	BL	8.3	-31.2	31.4	175	102	Vert.	40.0	8.6

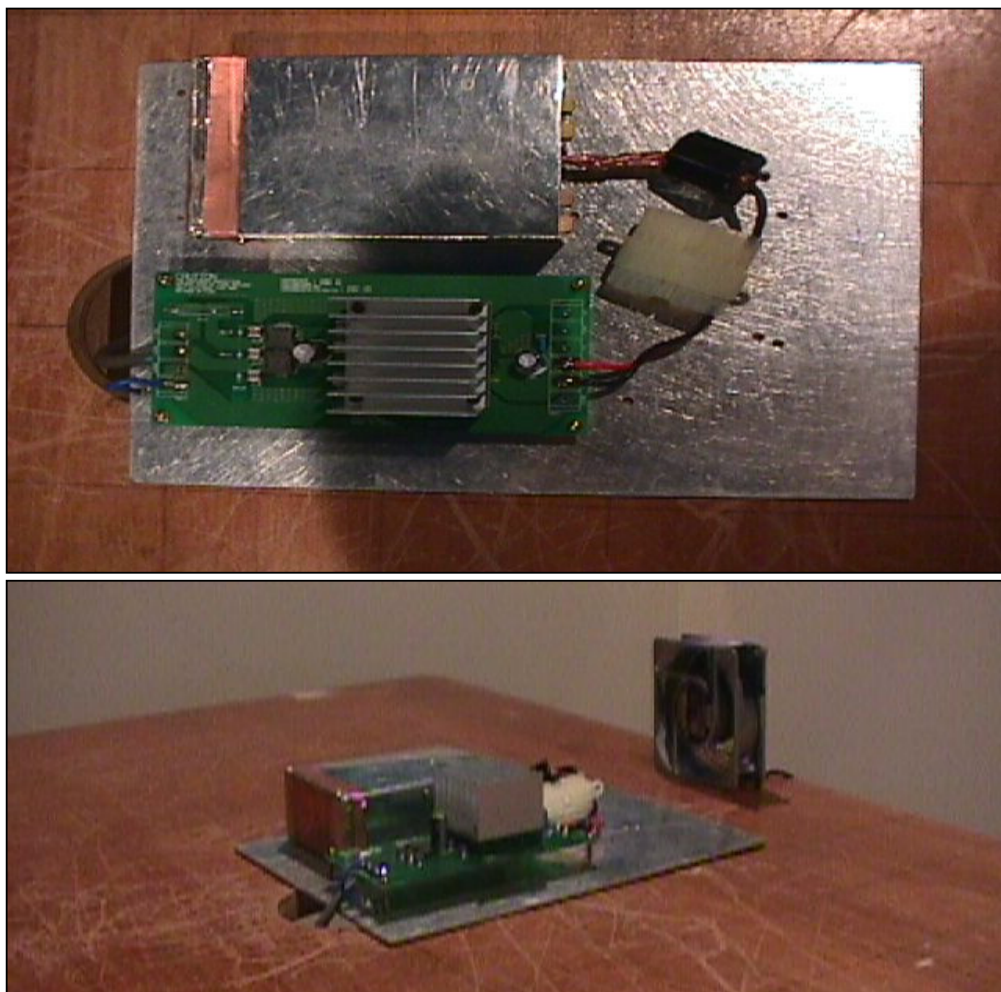
BL: Biconi-Log

Conditions

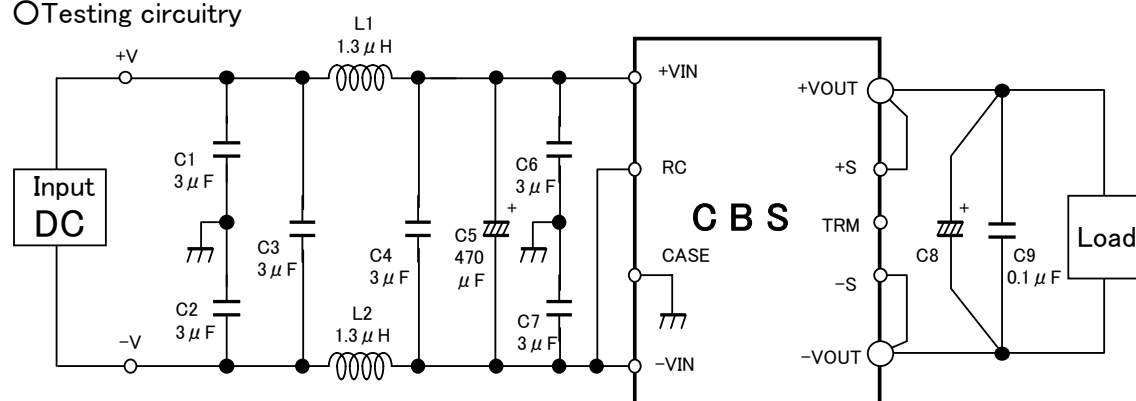
Date 2002/7/19

Test : RADIATED EMISSION
 Model Name : CBS1002403/15/24

○Photographs of Test Set-Up



○Testing circuitry



L1, L2 : ETQP6F1R3LFA (MATSUSHITA)

C1, C2, C3,

C4, C6, C7 : CY55Y5P2A305M (TOKIN)

C5 : 50V 470 μ F PMseries (nichicon)

C8 : CBS1002403 10V 2200 μ F LXZseries (NIPPON CHEMI-CON)

CBS1002415 25V 470 μ F LXZseries (NIPPON CHEMI-CON)

CBS1002424 35V 220 μ F LXZseries (NIPPON CHEMI-CON)

C9 : MDD21H104M (Nitsuko)

Fig. Testing circuitry



LINE CONDUCTION

Model Name : CBS1002424

Model No. :

Serial No. :

Points : 3

Detector : PEAK/QP/Ave.

Line Mode : VA/VB

Limit1: [EN 55022] Class B(QP)

Limit2: [EN 55022] Class B(Ave.)

Twsted by : T.Oiwake

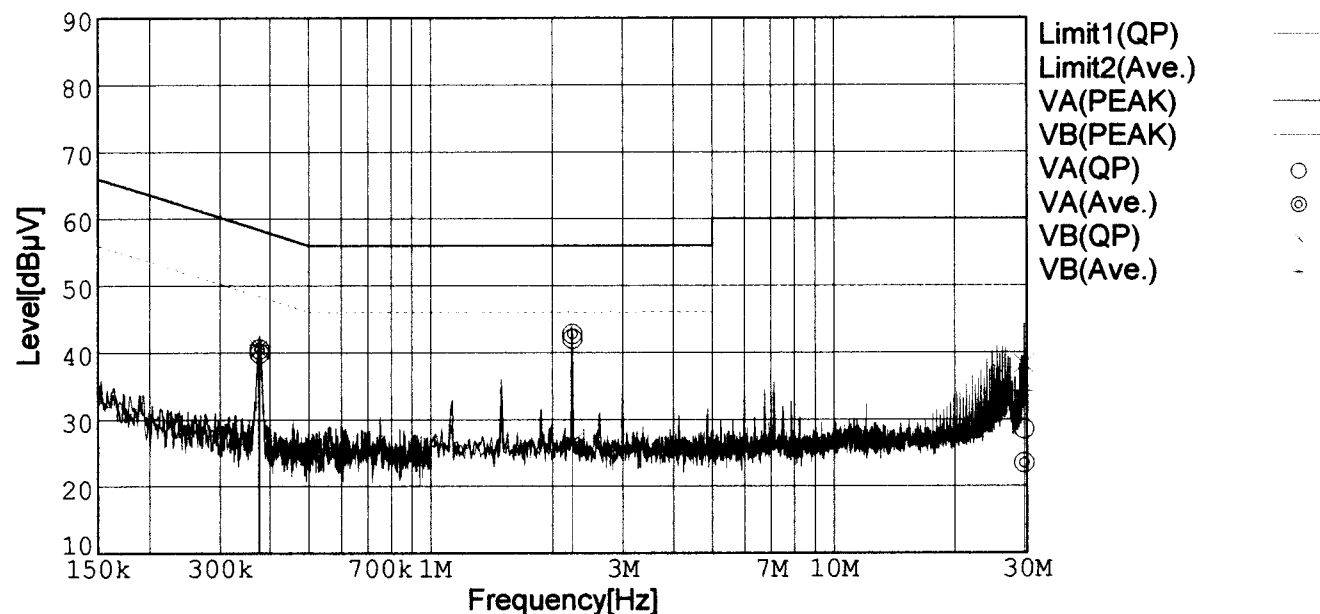
Temp. : 25degC

Humi. : 40%

Date : 2002/7/16 10:04

Test Equip. : R3132,ESPC

Comment : DC 24V, Io=4.2A



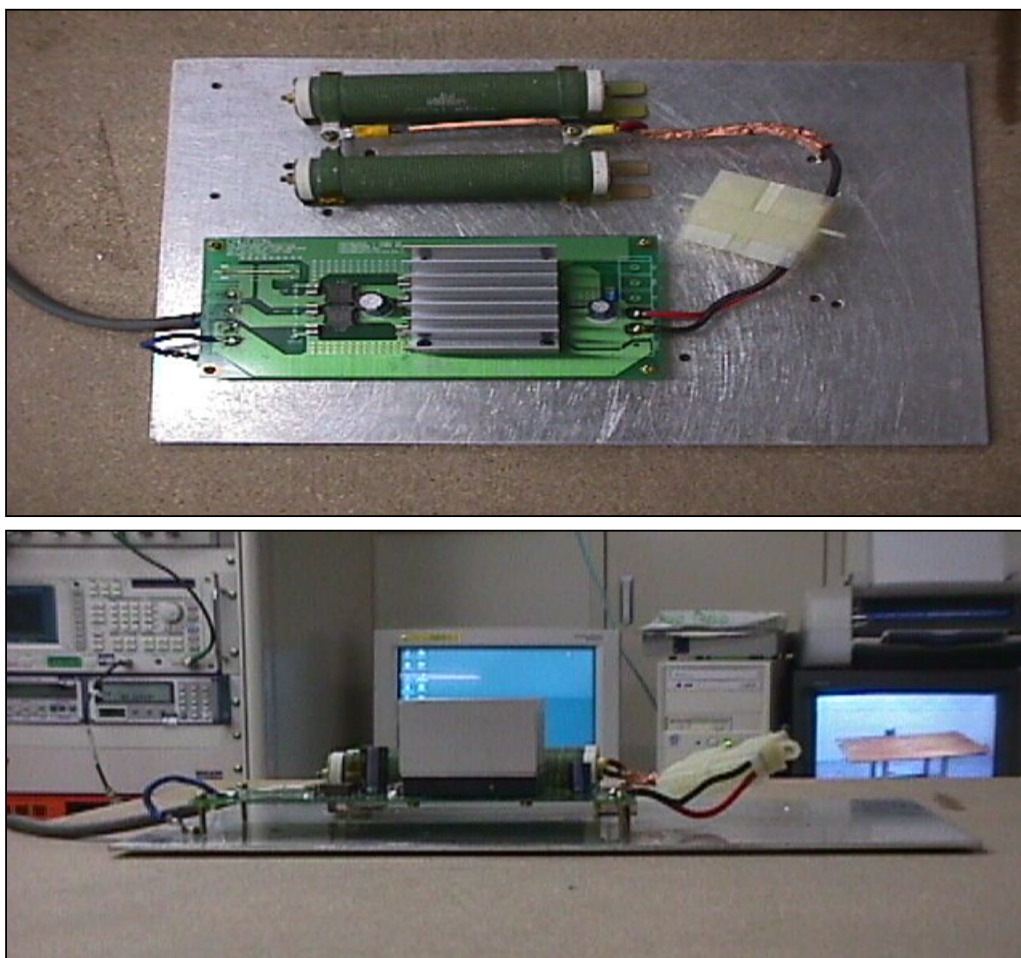
Frequency [MHz]	Meter Reading (QP) [dBμV]	Meter Reading (Ave.) [dBμV]	Factor [dB]	Level (QP) [dBμV]	Level (Ave.) [dBμV]	Line	Limit (QP) [dBμV]	Limit (Ave.) [dBμV]	Margin (QP)[dB]	Margin (Ave.) [dB]
0.3763	30.1	30.7	9.8	39.9	40.5	VA	58.4	48.4	18.5	7.9
2.2485	32.1	32.8	9.9	42.0	42.7	VA	56.0	46.0	14.0	3.3
29.5829	18.1	13.0	10.4	28.5	23.4	VA	60.0	50.0	31.5	26.6
0.3741	30.8	31.4	9.8	40.6	41.2	VB	58.4	48.4	17.8	7.2
2.2481	16.6	16.7	9.9	26.5	26.6	VB	56.0	46.0	29.5	19.4
29.5596	27.9	23.8	10.4	38.3	34.2	VB	60.0	50.0	21.7	15.8

Conditions

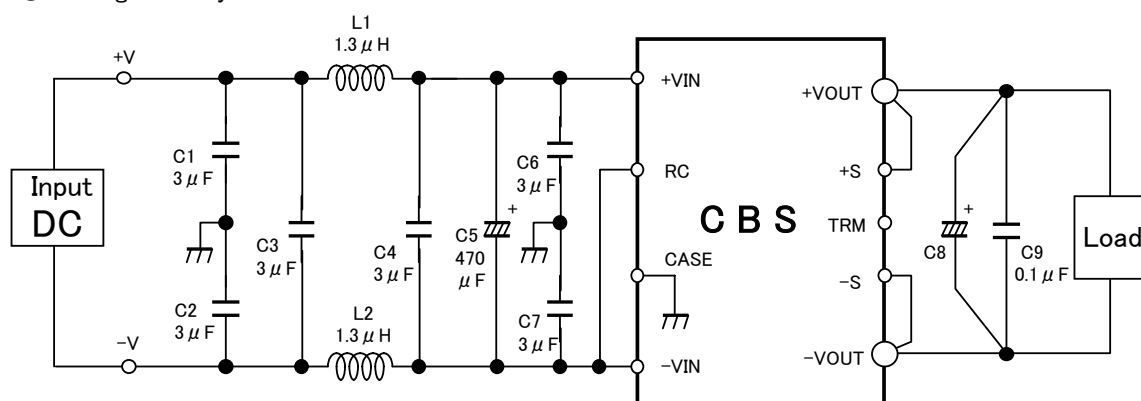
Date 2002/7/19

Test : LINE CONDUCTION
Model Name : CBS1002403/15/24

○Photographs of Test Set-Up



○Testing circuitry



L1, L2 : ETQP6F1R3LFA (MATSUSHITA)

C1, C2, C3,

C4, C6, C7 : CY55Y5P2A305M (TOKIN)

C5 : 50V 470 μ F PMseries (nichicon)

C8 : CBS1002403 10V 2200 μ F LXZseries (NIPPON CHEMI-CON)

CBS1002415 25V 470 μ F LXZseries (NIPPON CHEMI-CON)

CBS1002424 35V 220 μ F LXZseries (NIPPON CHEMI-CON)

C9 : MDD21H104M (Nitsuko)

Fig. Testing circuitry