



RADIATED EMISSION

Model Name : CBS1002405

Model No. :

Serial No. :

Points : 3

Detector : PEAK/QP

Polarization : Hori. & Vert.

Limit: [EN 55022] Class B<3m>

Power Supply :

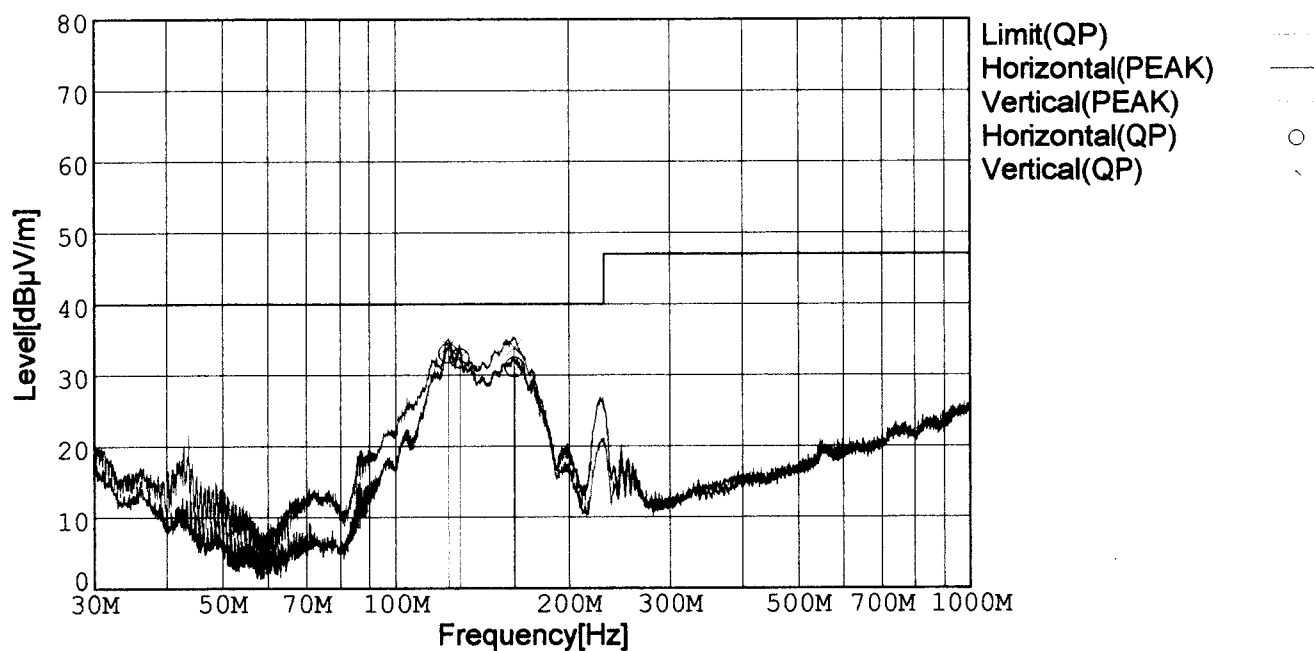
Temp. : 25degC

Humi. : 40%

Date : 2002/3/14 16:32

Test Equip. : R3132,ESPC

Comment : DC24V Io=20A



Frequency [MHz]	Meter Reading (QP) [dBμV]	Ant. Type	Antenna Factor [dB/m]	Cable & Preamp [dB]	Level (QP) [dBμV/m]	Angle[°]	Height [cm]	Polar.	Limit [dBμV/m]	Margin [dB]
123.389	53.6	BL	11.0	-31.5	33.1	244	158	Hori.	40.0	6.9
129.369	52.5	BL	11.2	-31.4	32.3	271	160	Hori.	40.0	7.7
160.993	52.6	BL	9.8	-31.3	31.1	251	159	Hori.	40.0	8.9
123.394	54.6	BL	11.0	-31.5	34.1	144	159	Vert.	40.0	5.9
129.343	52.6	BL	11.2	-31.4	32.4	161	158	Vert.	40.0	7.6
160.681	55.4	BL	9.8	-31.3	33.9	351	155	Vert.	40.0	6.1

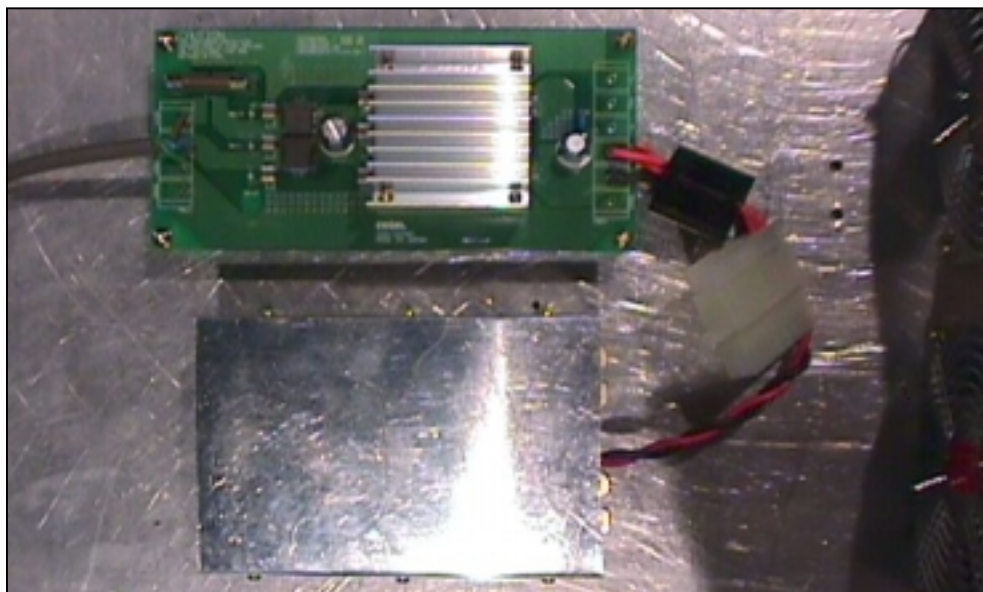
BL: Biconi-Log

Conditions

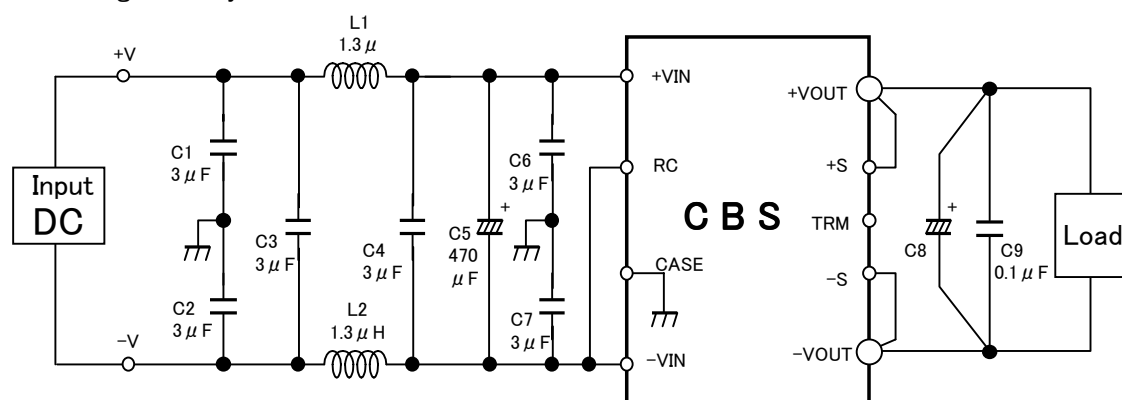
Date 2002/3/14

Test : RADIATED EMISSION
 Model Name : CBS1002405

○Photographs of Test Set-Up



○Testing circuitry



L1, L2 : ETQP6F1R3LFA (MATSUSHITA)
 C1, C2, C3, C4, C6, C7 : CY55Y5P2A305M (TOKIN)
 C5 : 50V 470 μ F PMseries (nichicon)
 C8 : 10V 2200 μ F LXZseries (NIPPON CHEMI-CON)
 C9 : MDD21H104M (Nitsuko)

Fig. Testing circuitry

LINE CONDUCTION

Model Name : CBS1002405

Model No. :

Serial No. :

Points : 3

Detector : PEAK/QP/Ave.

Line Mode : VA/VB

Limit1: [EN 55022] Class B(QP)

Limit2: [EN 55022] Class B(Ave.)

Power Supply :

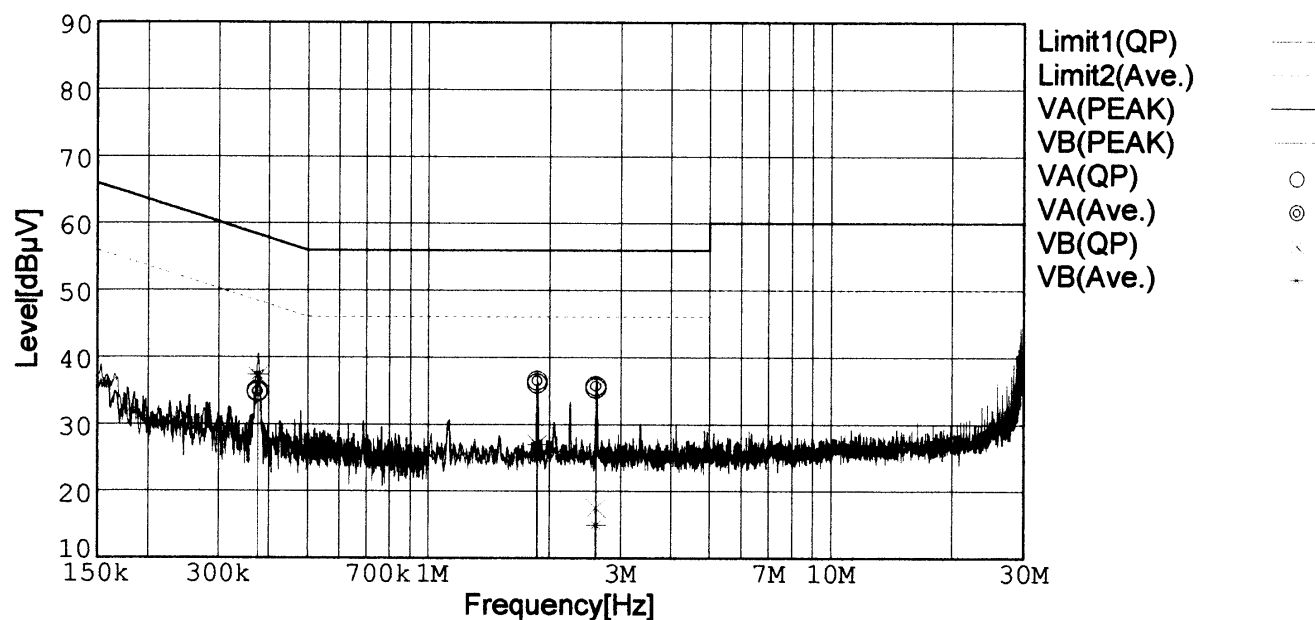
Temp. : 25degC

Humi. : 40%

Date : 2002/3/14 16:16

Test Equip. : R3132,ESPC

Comment : DC24V Io=20A



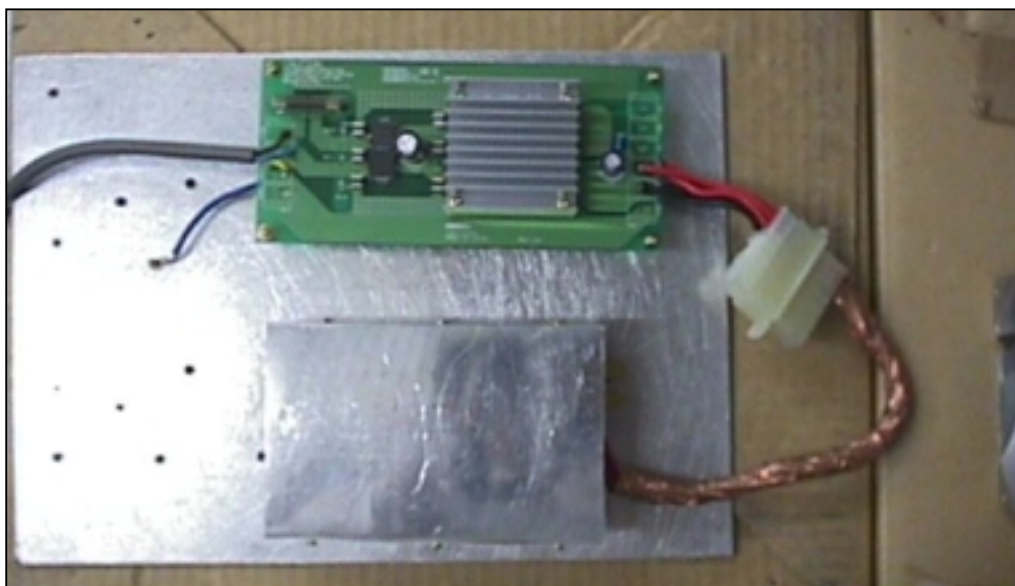
Frequency [MHz]	Meter Reading (QP) [dBμV]	Meter Reading (Ave.) [dBμV]	Factor [dB]	Level (QP) [dBμV]	Level (Ave.) [dBμV]	Line	Limit (QP) [dBμV]	Limit (Ave.) [dBμV]	Margin (QP)[dB]	Margin (Ave.) [dB]
0.3754	24.9	25.1	9.8	34.7	34.9	VA	58.4	48.4	23.7	13.5
1.8716	26.2	26.6	9.9	36.1	36.5	VA	56.0	46.0	19.9	9.5
2.6143	25.4	25.8	9.9	35.3	35.7	VA	56.0	46.0	20.7	10.3
0.3752	27.3	27.6	9.8	37.1	37.4	VB	58.4	48.4	21.3	11.0
1.8678	17.1	17.0	9.9	27.0	26.9	VB	56.0	46.0	29.0	19.1
2.6129	7.6	5.0	9.9	17.5	14.9	VB	56.0	46.0	38.5	31.1

Conditions

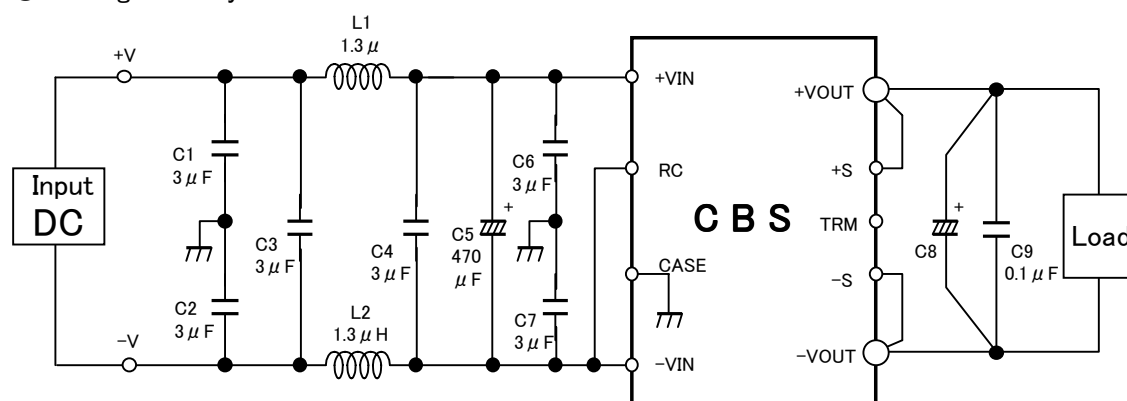
Date 2002/3/14

Test : LINE CONDUCTION
 Model Name : CBS1002405

○Photographs of Test Set-Up



○Testing circuitry



L1, L2 : ETQP6F1R3LFA (MATSUSHITA)
 C1, C2, C3, C4, C6, C7 : CY55Y5P2A305M (TOKIN)
 C5 : 50V 470 μ F PMseries (nichicon)
 C8 : 10V 2200 μ F LXZseries (NIPPON CHEMI-CON)
 C9 : MDD21H104M (Nitsuko)

Fig. Testing circuitry