

Apr.13,2007

Temperature increase of main components: 主要部品温度上昇

Cosel.co.,ltd.

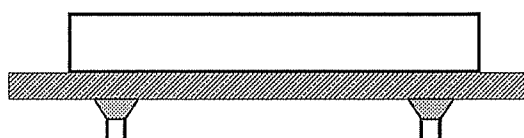
Model: ZUS1505/ZUW1505

1. Conditions

- (1) Input :DC 4.5 ~ 9 [V]
- (2) Output :Rated output
- (3) Mounting method :Shown as Fig.1.1

2. Result

No.	Parts name	Symbol No.	Increase (ΔT)				Rated temp. [°C]	Reference
			[deg]					
			5V	12V	$\pm 12V$	$\pm 15V$		
1	Transformer	T12	37	47	47	47	120	
2	Switching Transistor	TR16	54	65	59	59	150	Junction Temp.
3	Rectified Diode(Output)	SS71	44	47	48	48	150	Junction Temp.
4	Power Control Ic	IC11	32	38	41	41	125	Junction Temp.
5	Photocoupler	PC11	36	30	40	40	125	Junction Temp.
6	Output Choke	L71	32	36	41	41	120	
7	Output Capacitor	C73	31	32	-	-	125	
8	Output Capacitor	C72,C78	-	-	36	36	125	
9								
10								
11								
12								
13								
14								
15								
16								
17								
18								
19								
20								



(Side view)

Fig.1.1 Mounting method
(Normal position)