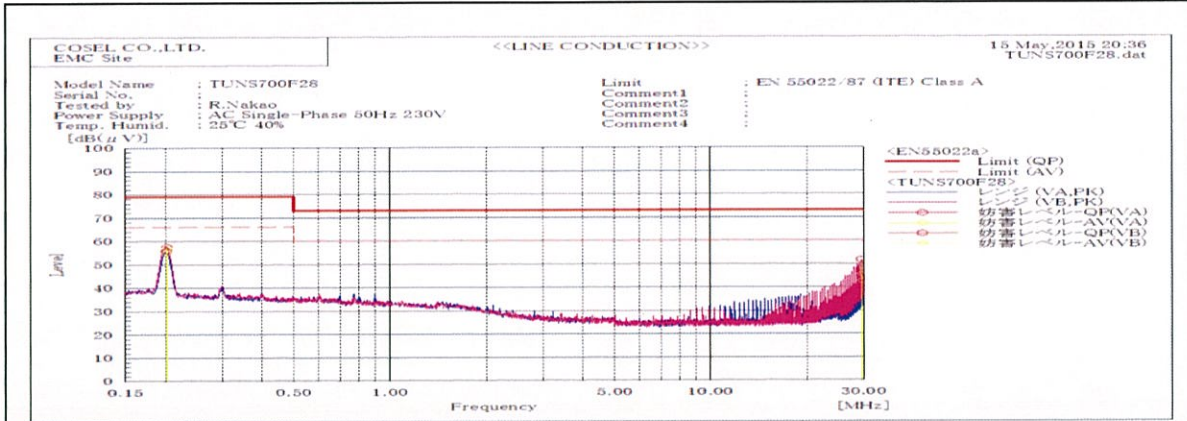
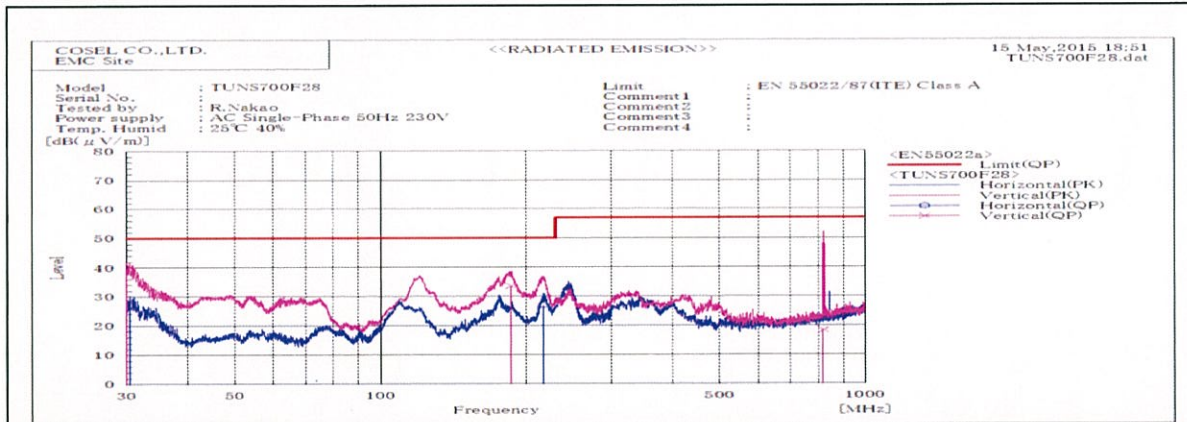




DATA SHEET		Date	25-May-15
Model	TUNS700F28	Temp.	25 degreeC
Test	EMI Line conduction & Radiated emission	Humid.	40 %RH
		Tested by	R.Nakao



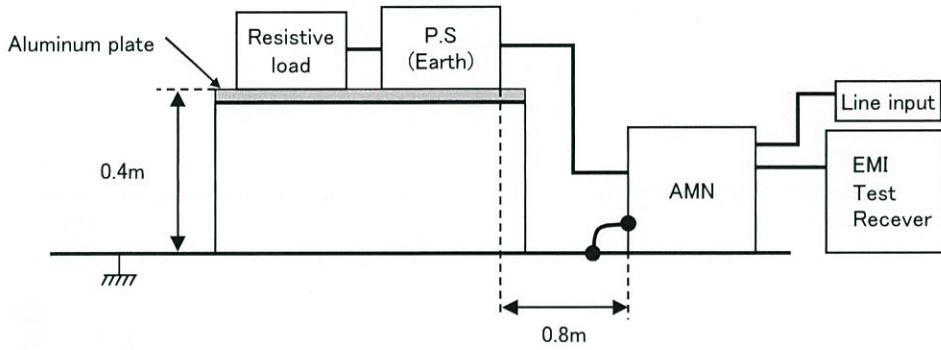
Frequency MHz	Harm	Line Phase	Reading dB(µV)		Factor dB	Level dB(µV)		Limit dB(µV)		Margin dB		Pass/ Fail	Remark
			QP	AV		QP	AV	QP	AV	QP	AV		
0.20239		VB	37.4	37.2	20.2	57.6	57.4	79.0	66.0	21.4	8.6	Pass	
0.20155		VA	35.8	35.2	20.2	56.0	55.4	79.0	66.0	23.0	10.6	Pass	
29.6391		VA	26.9	21.7	20.8	47.7	42.5	73.0	60.0	25.3	17.5	Pass	
29.636		VB	30.8	24.5	20.9	51.7	45.4	73.0	60.0	21.3	14.6	Pass	



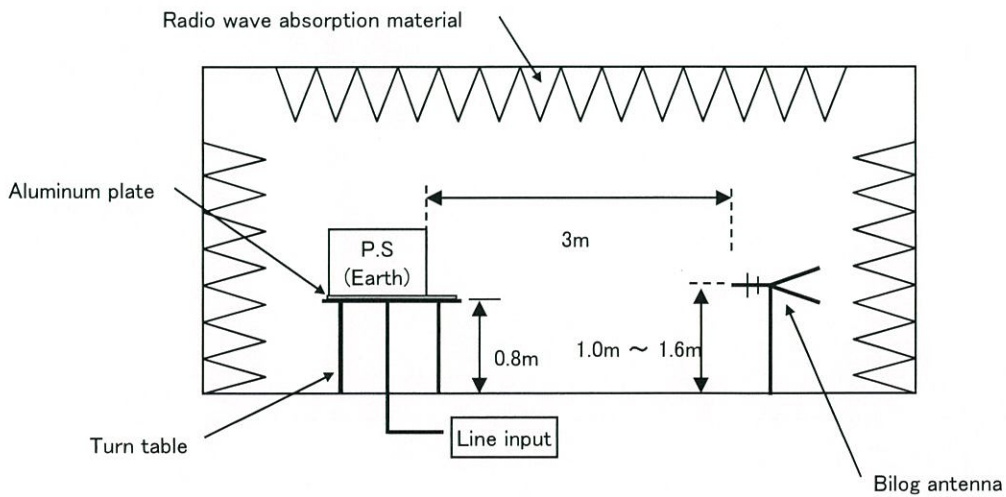
Frequency MHz	Polarization	Stability	Reading dB(µV)		Space Loss	Level dB(mW)		Limit dB(mW)	Margin dB	Pass/Fail	Height cm	Angle deg	Remark
			QP			QP	QP						
30.023	V	Stable	53.1	-13.5		39.6	50.0	10.4	Pass	126	154		
30.458	H	Stable	43.0	-13.7		29.3	50.0	20.7	Pass	149	227		
185.322	V	Stable	49.6	-16.0		33.6	50.0	16.4	Pass	105	59		
216.928	H	Stable	47.7	-20.7		27.0	50.0	23.0	Pass	151	245		
818.672	V	Stable	25.5	-7.2		18.3	57.0	38.7	Pass	111	243		

DATA SHEET		Date	25-May-15
Model	Circuit used for measurement	Temp.	25 degreeC
Test	EMI Line conduction & Radiated emission	Humid.	40 %RH
		Tested by	R.Nakao

1. Line conduction



2. Radiated emission

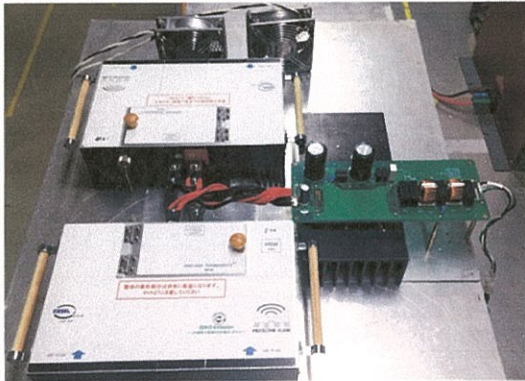




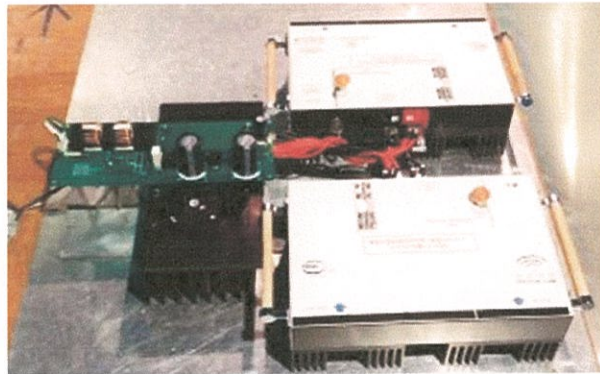
Test: EMI
 Model Name:TUNS700F Series

○ Photographs of Test Set-Up

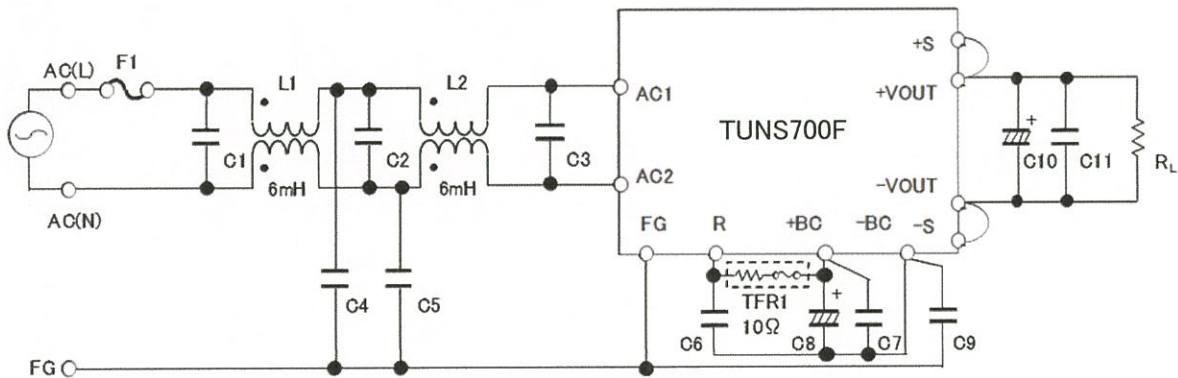
LINE CONDUCTION



RADIATED EMISSION



○ Test circuit



- | | |
|--|---|
| L1,L2 : ADM-25-12-060T(Ueno) | C11 : TUNS700F12 10 μ F Ceramic Capacitor |
| C1,C2 : 1.5 μ F 275V Film Capacitor | TUNS700F28 4.7 μ F Ceramic Capacitor |
| C3 : 1.5 μ F 275V Film Capacitor \times 2 | TUNS700F48 2.2 μ F Ceramic Capacitor |
| C4,C5,C9 : 2200pF Ceramic Capacitor | |
| C6,C7 : 0.68 μ F 450V Film Capacitor \times 2 | |
| C8 : 390 μ F 450V Electrolytic Capacitor \times 2 | |
| C10 : TUNS700F12 2200 μ F 25V Electrolytic Capacitor | |
| TUNS700F28 1000 μ F 50V Electrolytic Capacitor | |
| TUNS700F48 470 μ F 63V Electrolytic Capacitor | |