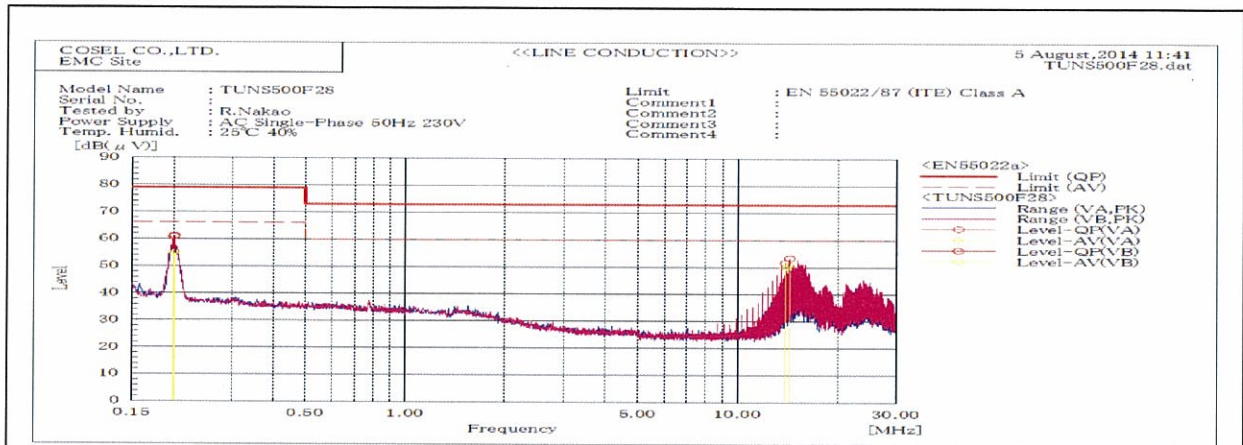
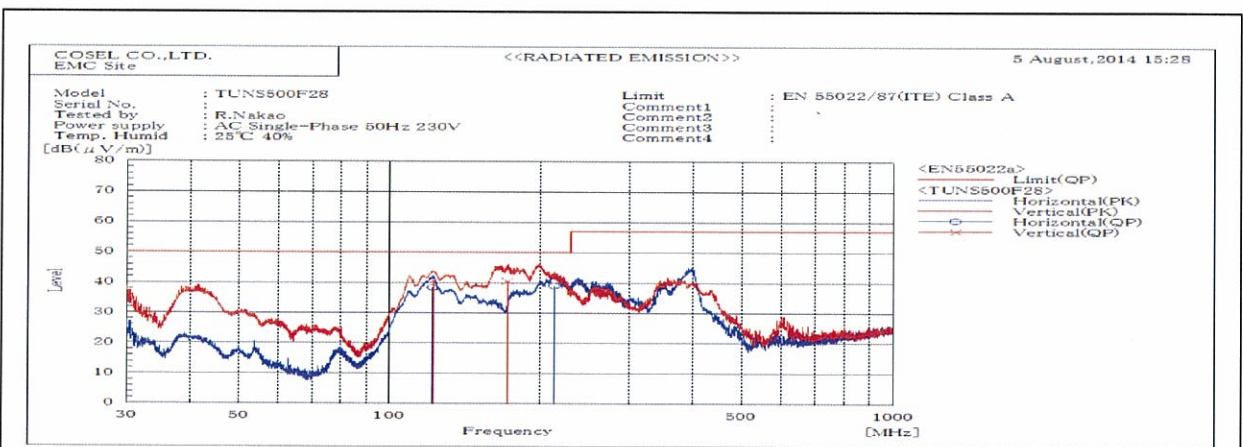


DATA SHEET		Date	20-Aug-14
Model	TUNS500F28	Temp.	25 degreeC
Test	EMI	Humid.	40 %RH
	Line conduction & Radiated emission	Tested by	R.Nakao



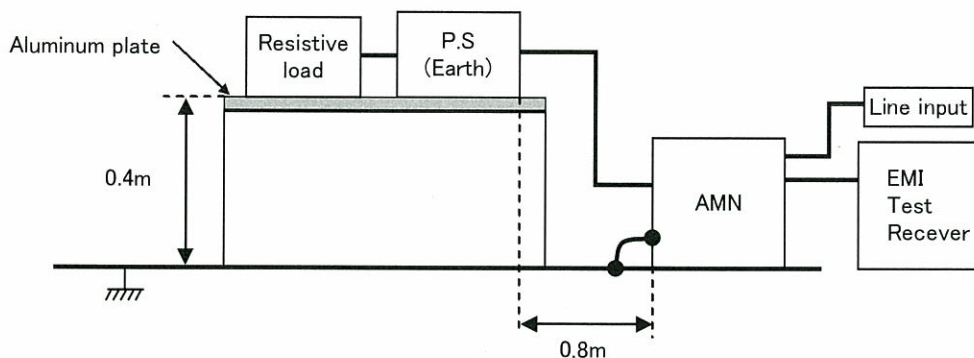
Frequency MHz	Harm	Line Phase	Reading dB(uV)		Factor dB	Level dB(uV)		Limit dB(uV)		Margin dB		Pass/Fail	Remark
			QP	AV		QP	AV	QP	AV	QP	AV		
0.20018		VA	40.6	34.5	20.2	60.8	54.7	79.0	66.0	18.2	11.3	Pass	
0.20114		VB	41.1	34.9	20.2	61.3	55.1	79.0	66.0	17.7	10.9	Pass	
13.8957		VA	30.8	28.9	21.0	51.8	49.9	73.0	60.0	21.2	10.1	Pass	
14.29695		VB	32.5	29.9	21.0	53.5	50.9	73.0	60.0	19.5	9.1	Pass	



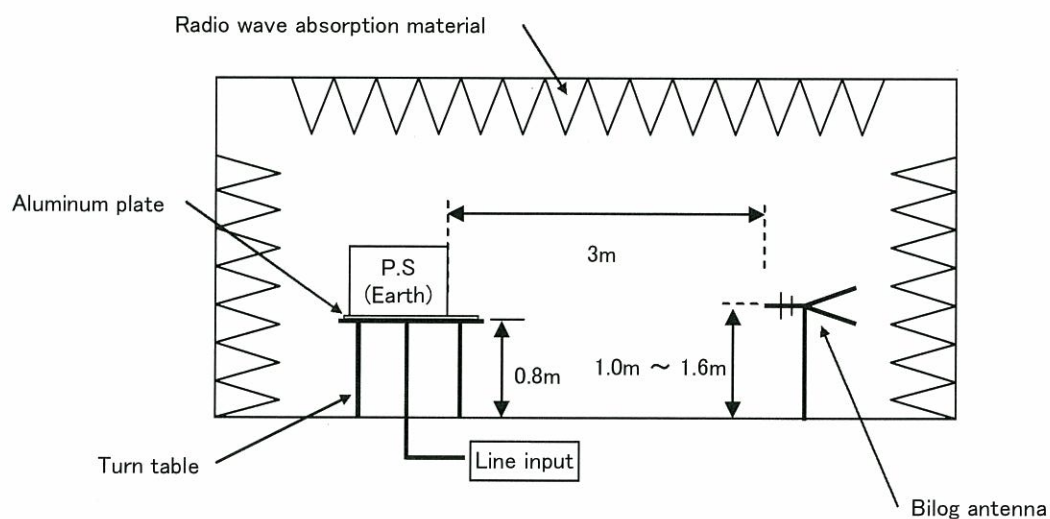
Frequency MHz	Polarization	Stability	Reading dB(uV)		Space Loss dB	Level dB(mW)		Limit dB(mW)	Margin dB	Pass/Fail	Height cm	Angle deg	Remark
			QP	AV		QP	QP						
121.695	H	Stable	57.7	-19.3		38.4	50.0	11.6	Pass	155	336		
121.997	V	Stable	57.7	-16.9		40.8	50.0	9.2	Pass	102	111		
172.073	V	Stable	56.7	-16.1		40.6	50.0	9.4	Pass	103	343		
212.74	H	Stable	60.1	-21.1		39.0	50.0	11.0	Pass	159	94		

DATA SHEET		Date	20-Aug-14
Model	Circuit used for measurement	Temp.	25 degreeC
Test	EMI Line conduction & Radiated emission	Humid.	40 %RH
		Tested by	R.Nakao

1. Line conduction



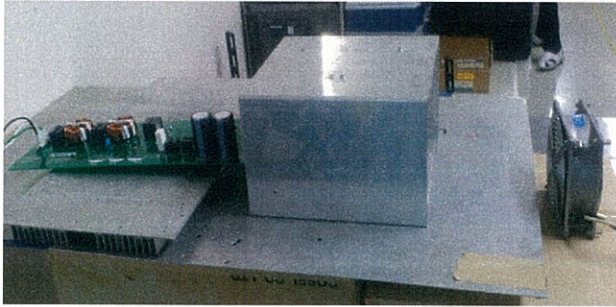
2. Radiated emission



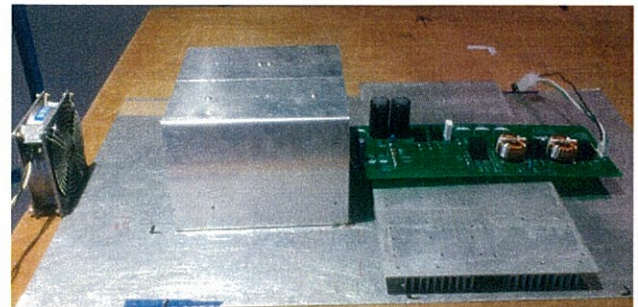
Test: EMI
 Model Name:TUNS500F Series

○ Photographs of Test Set-Up

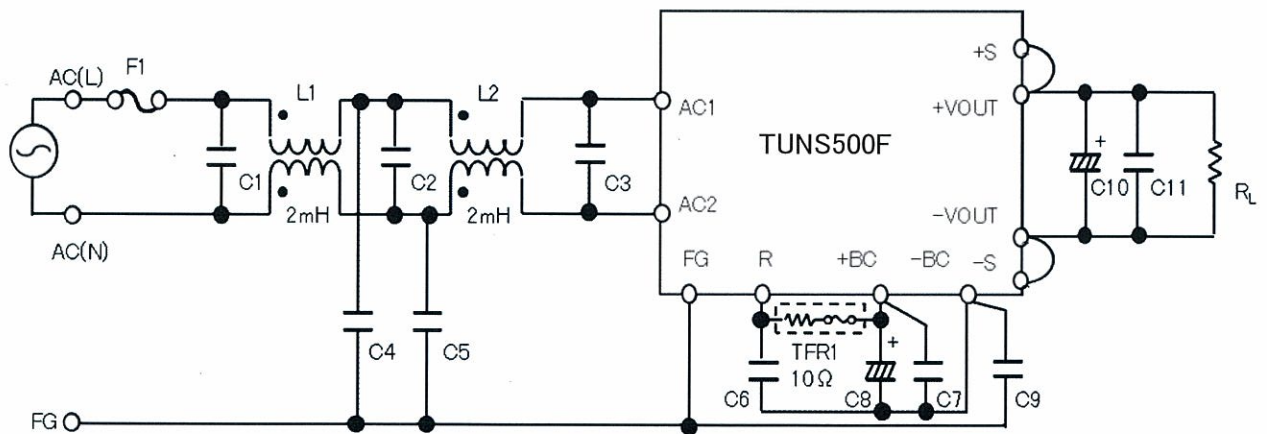
LINE CONDUCTION



RADIATED EMISSION



○ Test circuit



- | | | | |
|----------|--|-----|---|
| L1,L2 | : SC-15-200(NEC TOKIN) | C11 | : TUNS500F12 10 μ F Ceramic Capacitor |
| C1,C2 | : 0.68 μ F 310V Film Capacitor \times 2 | | TUNS500F28 4.7 μ F Ceramic Capacitor |
| C3 | : 1.0 μ F 310V Film Capacitor \times 2 | | TUNS500F48 2.2 μ F Ceramic Capacitor |
| C4,C5,C9 | : 2200pF Ceramic Capacitor | | |
| C6,C7 | : 0.68 μ F 450V Film Capacitor \times 2 | | |
| C8 | : 390 μ F 450V Electrolytic Capacitor \times 2 | | |
| C10 | : TUNS500F12 2200 μ F 25V Electrolytic Capacitor | | |
| | TUNS500F28 1000 μ F 50V Electrolytic Capacitor | | |
| | TUNS500F48 470 μ F 63V Electrolytic Capacitor | | |