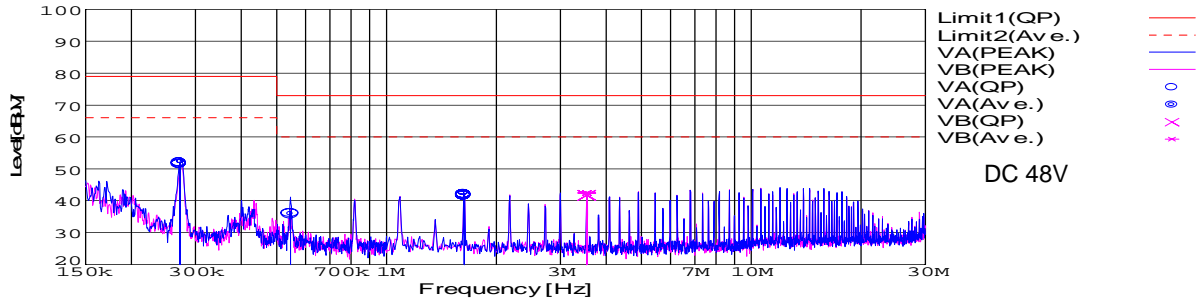


DATA SHEET		Date	27-Jan-09
Model	SUTW104815	Temp.	25 degreeC
Test	EMI Line conduction & Radiated emission	Humid.	45 %RH
		Tested by	D.Joboji

LINE CONDUCTION

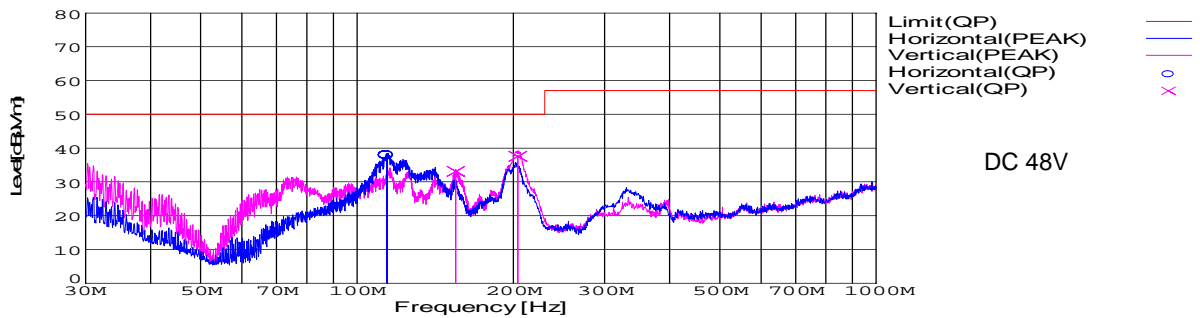
Model Name : SUTW104815 Temp. : 25
 Model No. : Humi. : 45
 Serial No. : Date : 2009/1/27 16:34
 Points : 4 Test Equip. : R3132,ESPC
 Detector : PEAK/QP/Ave. Load Line : 50mm
 Line Mode : VA/VB Comment :
 Power Supply : DC 48V
 Limit1: [EN 55022] Class A(QP)
 Limit2: [EN 55022] Class A(Ave.)



Frequency [MHz]	Meter Reading (Ave.) [dBuV]	Meter Reading (QP) [dBuV]	Factor [dB]	Level(Ave.) [dBuV]	Level(QP) [dBuV]	Line	Limit(Ave.) [dBuV]	Limit(QP) [dBuV]	Margin(Ave.) [dB]	Margin(QP) [dB]
0.2721	42.2	41.5	9.8	52	51.3	VA	66	79	14	27.7
0.5456	26	26.3	9.9	35.9	36.2	VA	60	73	24.1	36.8
1.6337	32.3	31.6	9.9	42.2	41.5	VA	60	73	17.8	31.5
3.54	32.4	31.7	10	42.4	41.7	VB	60	73	17.6	31.3

RADIATED EMISSION

Model Name : SUTW104815 Temp. : 25
 Model No. : Humi. : 45
 Serial No. : Date : 2009/1/27 15:55
 Points : 3 Test Equip. : R3132,ESPC
 Detector : PEAK/QP Load Line : 50mm
 Polarization : Hori. & Vert. Comment :
 Power Supply : DC 48V
 Limit: [EN 55022] Class A<3m>

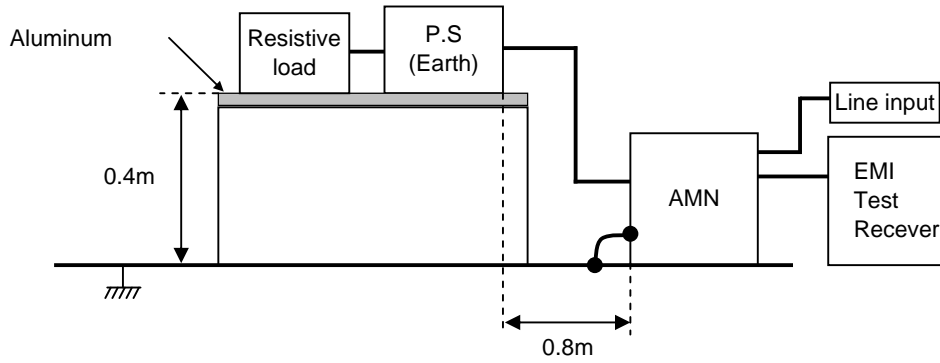


Frequency [MHz]	Meter Reading (QP) [dBuV]	Ant. Type	Antenna Factor [dB/m]	Cable & Preamp [dB]	Level(QP) [dBuV/m]	Angle [°]	Height [cm]	Polar.	Limit [dBuV/m]	Margin [dB]
114.268	58.9	BL	10.8	-31.7	38	185	141	Hori.	50	12
155.075	54.3	BL	10.3	-31.5	33.1	322	160	Vert.	50	16.9
204.11	60.3	BL	8.6	-31.3	37.6	309	122	Vert.	50	12.4

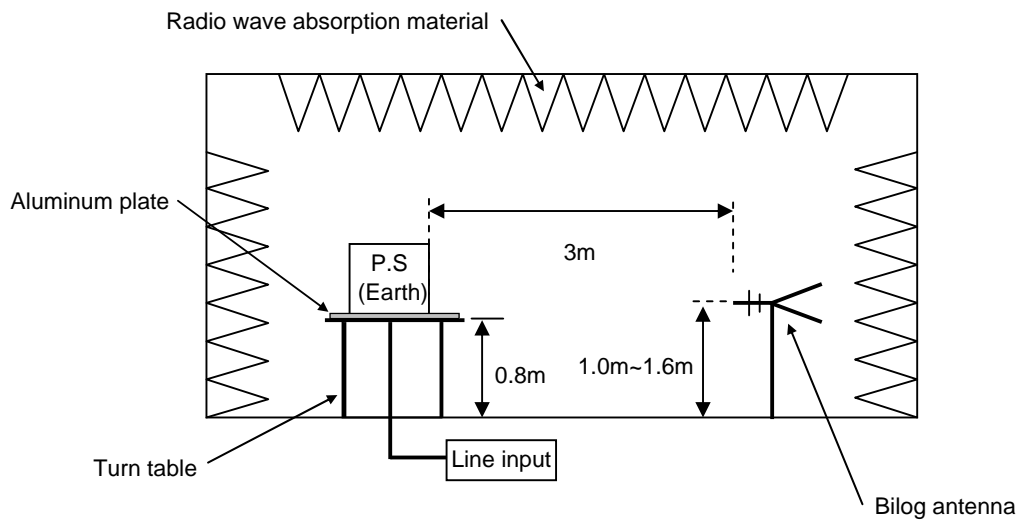
DATA SHEET

Model	Circuit used for measurement
Test	EMI Line conduction & Radiated emission

1. Line conduction



2. Radiated emission





Conditions

Test : EMI
 Model Name : SUTS/SUTW1048□□

○Photographs of Test Set-Up

LINE CONDUCTION



RADIATED EMISSION



○Testing circuitry

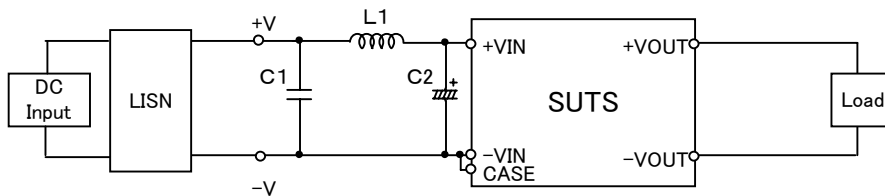


Fig.1 Testing circuitry 1

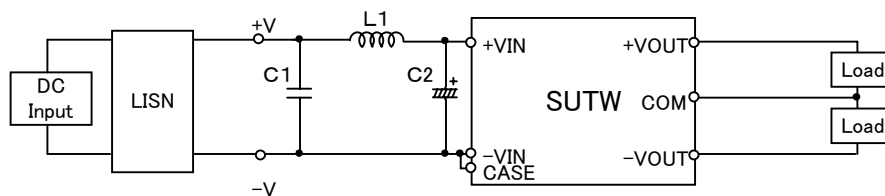


Fig.2 Testing circuitry 2

- | | | |
|----------------------|---------------|---------------------|
| L1 : 10 μ H | CY3H-100 | (KORIN ELECTRONICS) |
| C1: 100V 2.2 μ F | C4532JB2A225M | (TDK) |
| C2: 100V 47 μ F | UPW2A470M | (NICHICON) |