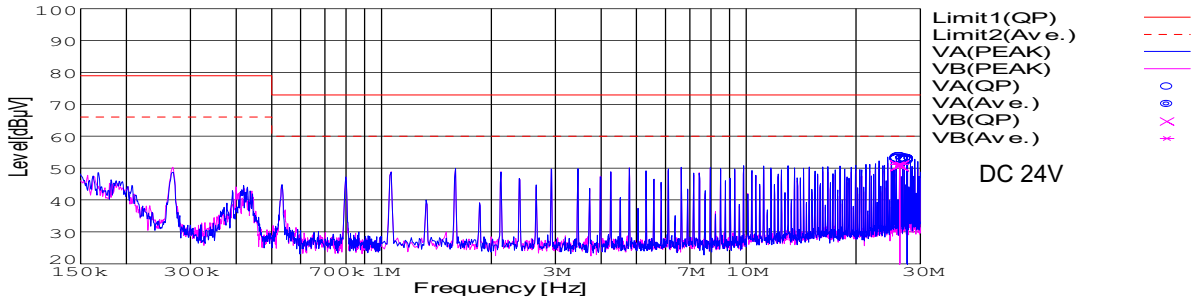


DATA SHEET		Date	20-May-09
Model	SUTW102415-G	Temp.	25 degreeC
Test	EMI Line conduction & Radiated emission	Humid.	45 %RH
		Tested by	D.Joboji

**LINE CONDUCTION**

Model Name : SUTW102415-G Temp. : 25  
 Model No. : Humi. : 44  
 Serial No. : Date : 2009/5/20 14:37  
 Points : 2 Test Equip. : R3132,ESPC  
 Detector : PEAK/QP/Ave. Load Line : 30mm  
 Line Mode : VA/VB Comment :  
 Power Supply : DC 24V

Limit1: [EN 55022] Class A(QP)  
 Limit2: [EN 55022] Class A(Ave.)

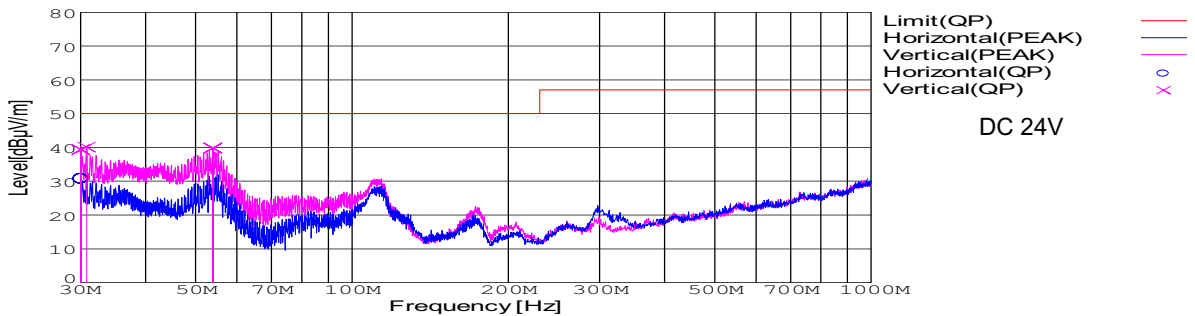


Frequency [MHz]	Meter Reading (Ave.) [dBuV]	Meter Reading (QP) [dBuV]	Factor [dB]	Level(Ave.) [dBuV]	Level(QP) [dBuV]	Line	Limit(Ave.) [dBuV]	Limit(QP) [dBuV]	Margin(Ave.) [dB]	Margin(QP) [dB]
26.2965	42.8	42.3	10.4	53.2	52.7	VA	60	73	6.8	20.3
27.6246	42.5	42	10.4	52.9	52.4	VA	60	73	7.1	20.6
26.298	40.8	40.3	10.4	51.2	50.7	VB	60	73	8.8	22.3

**RADIATED EMISSION**

Model Name : SUTW102415-G Temp. : 25  
 Model No. : Humi. : 44  
 Serial No. : Date : 2009/5/20 15:16  
 Points : 3 Test Equip. : R3132,ESPC  
 Detector : PEAK/QP Load Line : 30mm  
 Polarization : Hori. & Vert. Comment :  
 Power Supply : DC 24V

Limit: [EN 55022] Class A<3m>

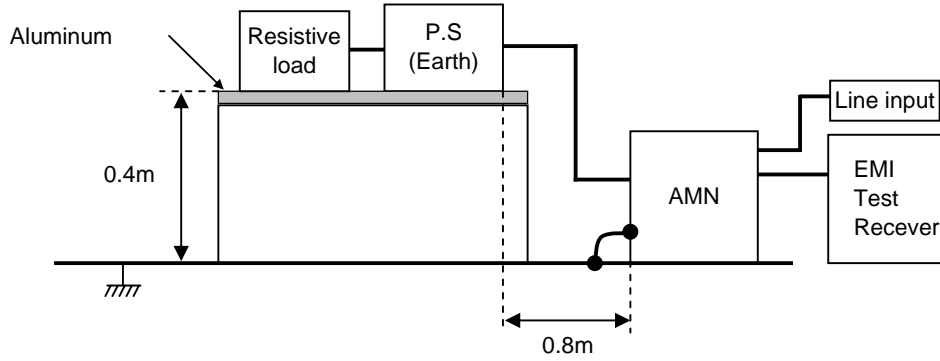


Frequency [MHz]	Meter Reading (QP) [dBuV]	Ant. Type	Antenna Factor [dB/m]	Cable & Preamp [dB]	Level(QP) [dBuV/m]	Angle [°]	Height [cm]	Polar.	Limit [dBuV/m]	Margin [dB]
171.349	54.9	BL	8.8	-31.4	32.3	177	157	Hori.	50	17.7
30.028	53.5	BL	18.2	-32.3	39.4	294	101	Vert.	50	10.6
30.828	54.6	BL	17.8	-32.3	40.1	271	101	Vert.	50	9.9
53.944	65.9	BL	6	-32.1	39.8	210	100	Vert.	50	10.2

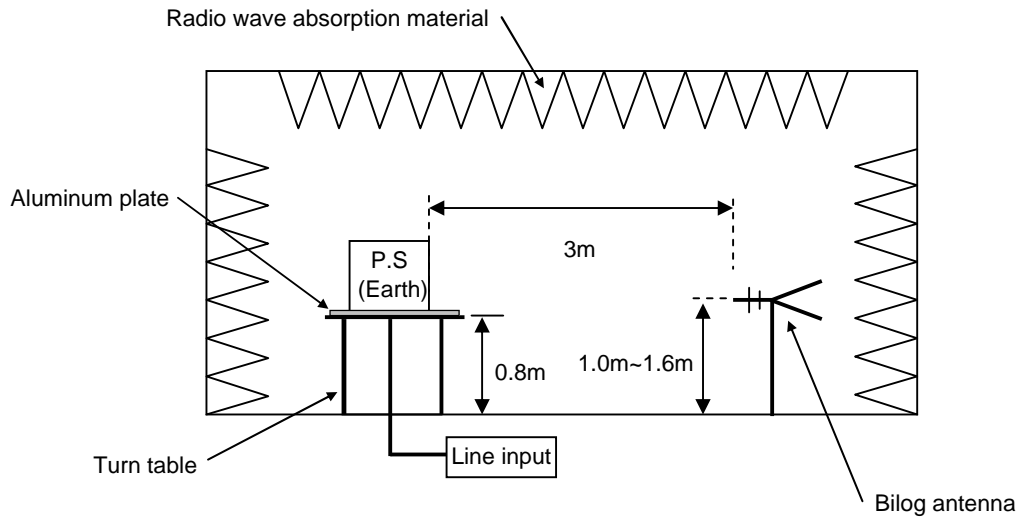
**DATA SHEET**

Model	Circuit used for measurement
Test	EMI Line conduction & Radiated emission

**1. Line conduction**



**2. Radiated emission**





### Conditions

Test : EMI  
 Model Name : SUTS/SUTW 1024□□-G

#### ○Photographs of Test Set-Up LINE CONDUCTION



#### RADIATED EMISSION



#### ○Testing circuitry

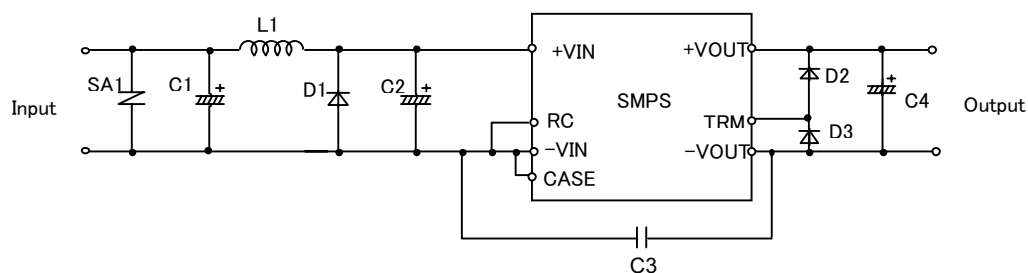


Fig.1 Testing circuitry 1

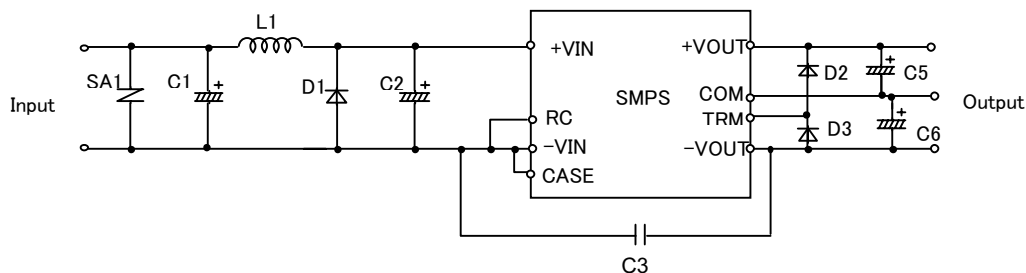


Fig.2 Testing circuitry 2

- C1,C2 : 50V 100  $\mu$ F UPM1H101M (NICHICON)
- SA1 : 47V ERZV10D470 (MATSUSHITA ELECTRONICS)
- L1 : 2.2  $\mu$ H CY3H-2R2 (KORINELECTRONICS)
- D1 : 3A 200V ERD32-02 (FUJI ELECTRIC)
- D2,D3 : 1A 100V S5566B (TOSHIBA)
- C3 : 2000V 100pF CF42W5R101K2000A (KYOCERA)
- C4 : SUTS10243R3-G/SUTS102405-G  
 25V 470  $\mu$ F ELXY250ELL470M (NIPPON CHEMI-COM)  
 SUTS102412-G/SUTS102415-G
- C5,6 : SUTW102412-G/SUTW102415-G  
 50V 100  $\mu$ F UPM1H101M (NICHICON)