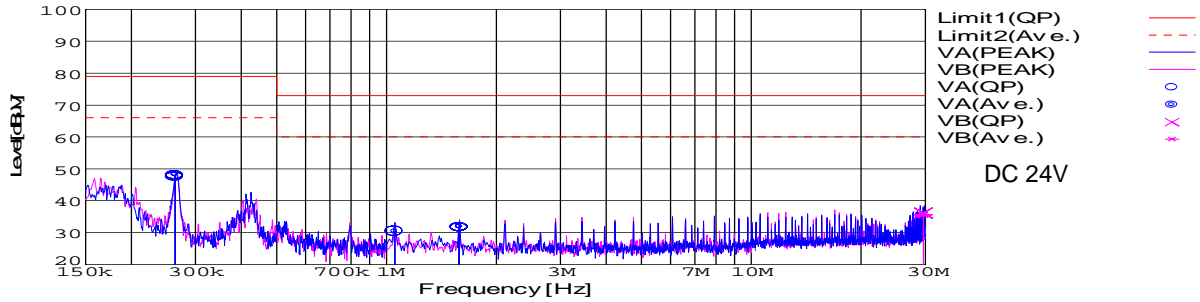


DATA SHEET		Date	27-Jan-09
Model	SUTW102415	Temp.	25 degreeC
Test	EMI Line conduction & Radiated emission	Humid.	45 %RH
		Tested by	D.Joboji

LINE CONDUCTION

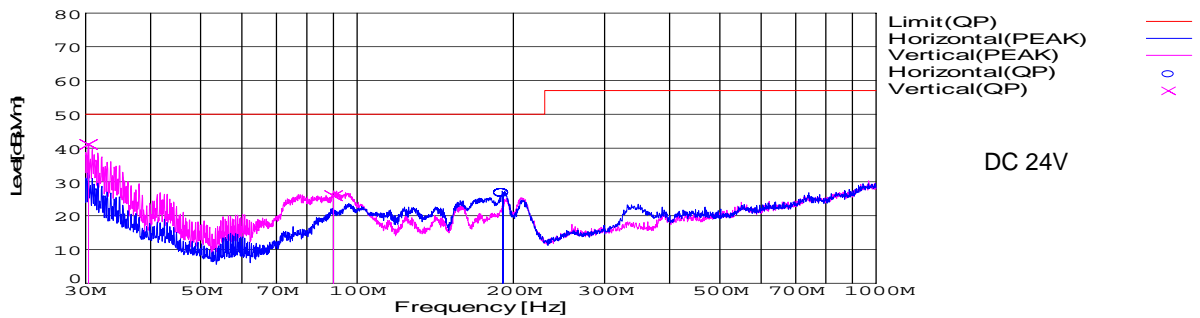
Model Name : SUTW102415 Temp. : 25
 Model No. : Humi. : 45
 Serial No. : Date : 2009/1/27 14:25
 Points : 4 Test Equip. : R3132,ESPC
 Detector : PEAK/QP/Ave. Load Line : 50mm
 Line Mode : VA/VB Comment :
 Power Supply : DC 24V
 Limit1: [EN 55022] Class A(QP)
 Limit2: [EN 55022] Class A(Ave.)



Frequency [MHz]	Meter Reading (Ave.) [dBμV]	Meter Reading (QP) [dBμV]	Factor [dB]	Level(Ave.) [dBμV]	Level(QP) [dBμV]	Line	Limit(Ave.) [dBμV]	Limit(QP) [dBμV]	Margin(Ave.) [dB]	Margin(QP) [dB]
0.2639	38.3	37.9	9.8	48.1	47.7	VA	66	79	17.9	31.3
1.0551	20.5	20.5	9.9	30.4	30.4	VA	60	73	29.6	42.6
1.5844	21.8	21.6	9.9	31.7	31.5	VA	60	73	28.3	41.5
29.5986	25.1	25.6	10.5	35.6	36.1	VB	60	73	24.4	36.9

RADIATED EMISSION

Model Name : SUTW102415 Temp. : 25
 Model No. : Humi. : 45
 Serial No. : Date : 2009/1/27 14:56
 Points : 3 Test Equip. : R3132,ESPC
 Detector : PEAK/QP Load Line : 50mm
 Polarization : Hori. & Vert. Comment :
 Power Supply : DC 24V
 Limit: [EN 55022] Class A<3m>

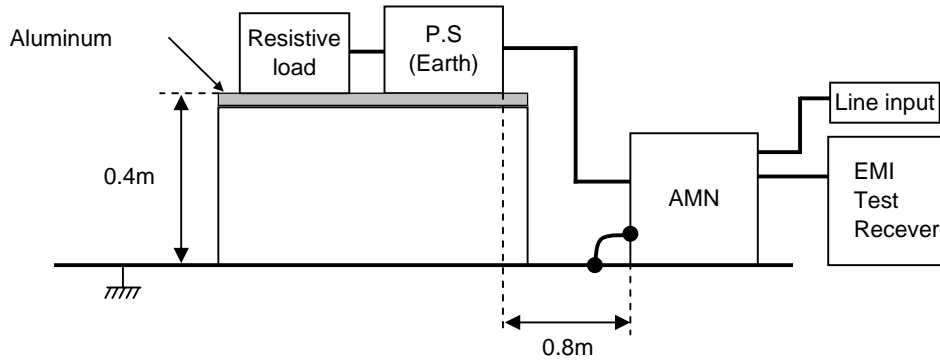


Frequency [MHz]	Meter Reading (QP) [dBμV]	Ant. Type	Antenna Factor [dB/m]	Cable & Preamp [dB]	Level(QP) [dBμV/m]	Angle [°]	Height [cm]	Polar.	Limit [dBμV/m]	Margin [dB]
190.786	49.7	BL	8.3	-31.3	26.7	164	155	Hori.	50	23.3
30.4	55.4	BL	18	-32.3	41.1	212	100	Vert.	50	8.9
90.105	49.2	BL	8.5	-31.8	25.9	239	111	Vert.	50	24.1

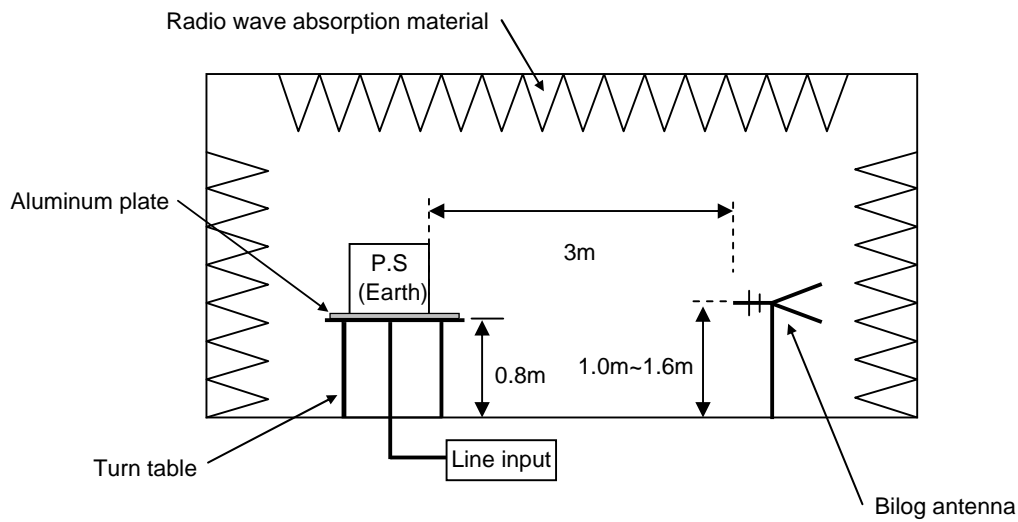
DATA SHEET

Model	Circuit used for measurement
Test	EMI Line conduction & Radiated emission

1. Line conduction



2. Radiated emission





Conditions

Test : EMI
 Model Name : SUTS/SUTW1024□□

○Photographs of Test Set-Up

LINE CONDUCTION



RADIATED EMISSION



○Testing circuitry

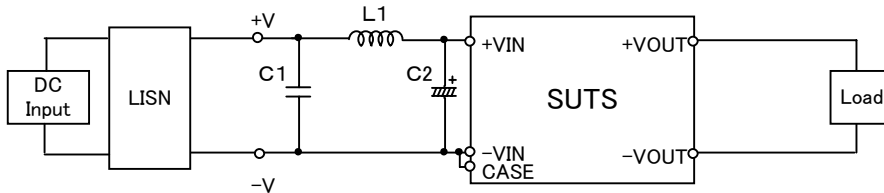


Fig.1 Testing circuitry 1

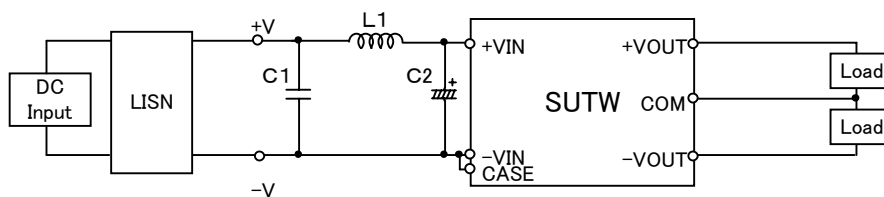


Fig.2 Testing circuitry 2

- | | | |
|----------------------|---------------|---------------------|
| L1 : 2.2 μ H | CY3H-2R2 | (KORIN ELECTRONICS) |
| C1 : 50V 3.3 μ F | C3225JB1H335M | (TDK) |
| C2 : 50V 100 μ F | UPM1H101M | (NICHICON) |