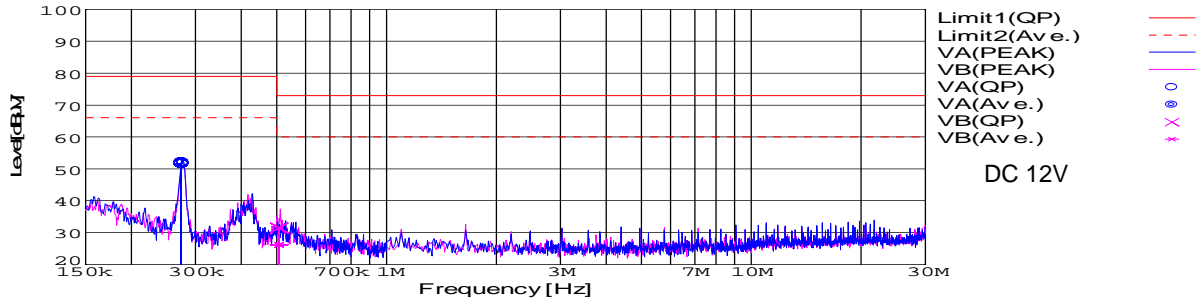


DATA SHEET		Date	27-Jan-09
Model	SUTW101215	Temp.	25 degreeC
Test	EMI Line conduction & Radiated emission	Humid.	45 %RH
		Tested by	D.Joboji

LINE CONDUCTION

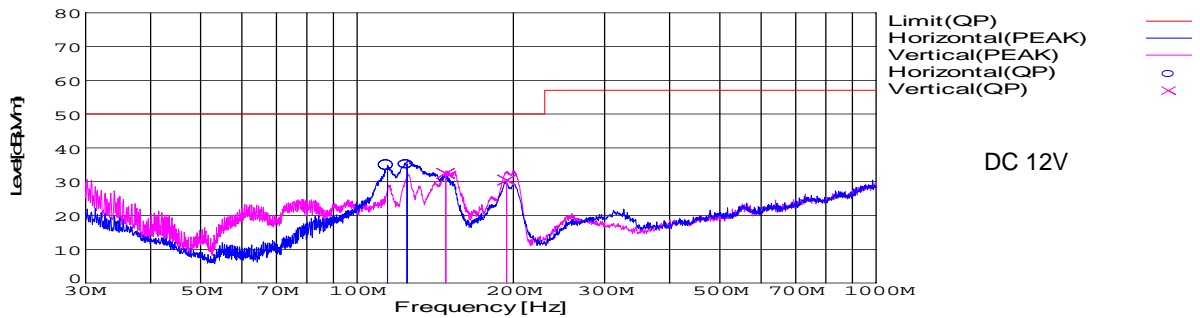
Model Name : SUTW101215 Temp. : 25
 Model No. : Humi. : 45
 Serial No. : Date : 2009/1/27 13:33
 Points : 2 Test Equip. : R3132,ESPC
 Detector : PEAK/QP/Ave. Load Line : 50mm
 Line Mode : VA/VB Comment :
 Power Supply : DC 12V
 Limit1: [EN 55022] Class A(QP)
 Limit2: [EN 55022] Class A(Ave.)



Frequency [MHz]	Meter Reading (Ave.) [dBuV]	Meter Reading (QP) [dBuV]	Factor [dB]	Level(Ave.) [dBuV]	Level(QP) [dBuV]	Line	Limit(Ave.) [dBuV]	Limit(QP) [dBuV]	Margin(Ave.) [dB]	Margin(QP) [dB]
0.2741	42.2	41.7	9.8	52	51.5	VA	66	79	14	27.5
0.5082	16.3	21.6	9.9	26.2	31.5	VB	60	73	33.8	41.5

RADIATED EMISSION

Model Name : SUTW101215 Temp. : 25
 Model No. : Humi. : 45
 Serial No. : Date : 2009/1/27 13:48
 Points : 4 Test Equip. : R3132,ESPC
 Detector : PEAK/QP Load Line : 50mm
 Polarization : Hori. & Vert. Comment :
 Power Supply : DC 12V
 Limit: [EN 55022] Class A<3m>

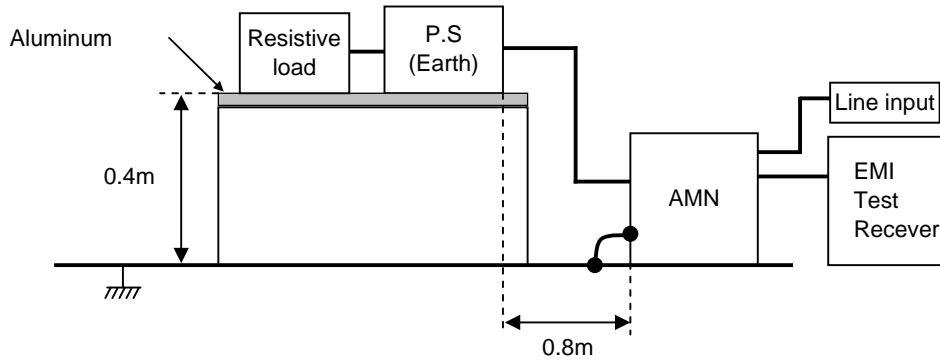


Frequency [MHz]	Meter Reading (QP) [dBuV]	Ant. Type	Antenna Factor [dB/m]	Cable & Preamp [dB]	Level(QP) [dBuV/m]	Angle [°]	Height [cm]	Polar.	Limit [dBuV/m]	Margin [dB]
114.414	55.8	BL	10.8	-31.7	34.9	195	137	Hori.	50	15.1
124.865	55.8	BL	11.1	-31.7	35.2	210	122	Hori.	50	14.8
148.223	53.5	BL	10.6	-31.6	32.5	355	146	Vert.	50	17.5
194.179	53.3	BL	8.4	-31.3	30.4	113	100	Vert.	50	19.6

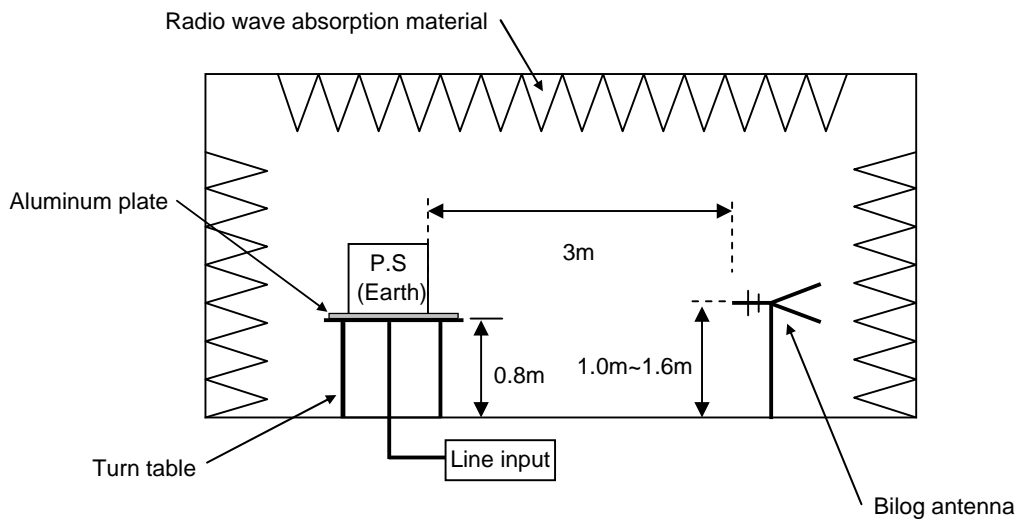
DATA SHEET

Model	Circuit used for measurement
Test	EMI Line conduction & Radiated emission

1. Line conduction



2. Radiated emission





Conditions

Test : EMI
 Model Name : SUTS/SUTW1012□□

○Photographs of Test Set-Up

LINE CONDUCTION



RADIATED EMISSION



○Testing circuitry

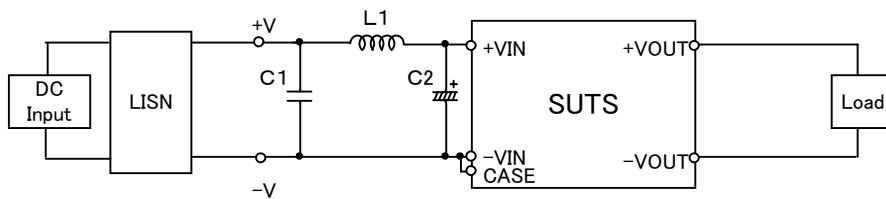


Fig.1 Testing circuitry 1

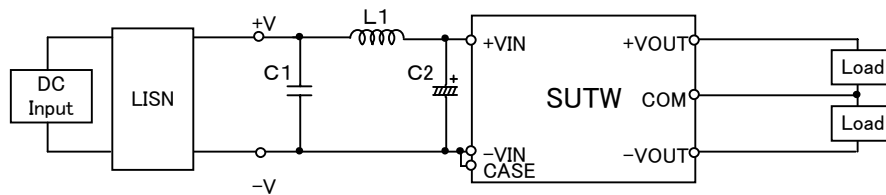


Fig.2 Testing circuitry 2

L1 : 1 μ H	CI4C-1R0	(KORIN ELECTRONICS)
C1: 25V 10 μ F	C3225JB1E106M	(TDK)
C2: 25V 220 μ F	UPW1E221M	(NICHICON)