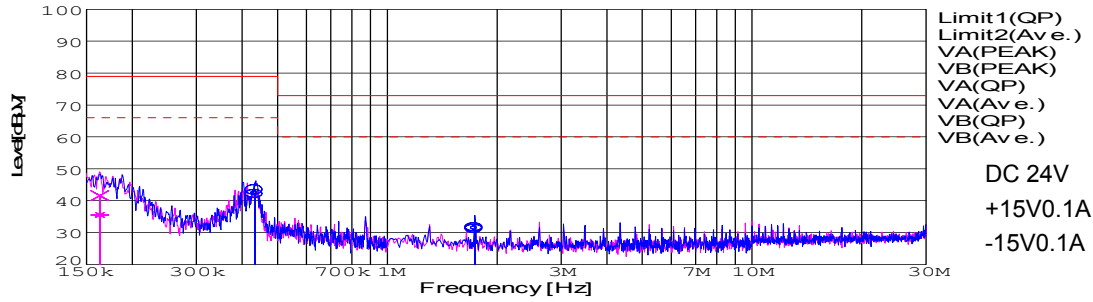


DATA SHEET		Date	16-May-05
Model	SUCW32415	Temp.	25 degreeC
Test	EMI Line conduction & Radiated emission	Humid.	45 %RH
		Tested by	T.Ohara

LINE CONDUCTION

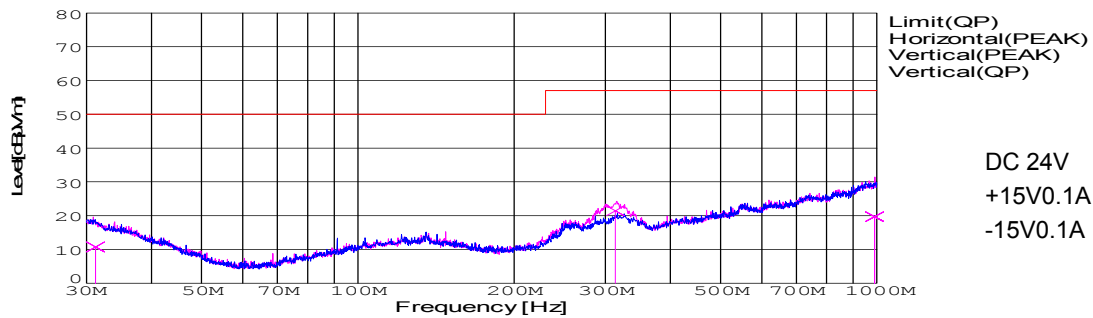
Model Name : SUCW32415 Temp. : 25
 Model No. : Humi. : 45
 Serial No. : Date : 2005/5/16 16:19
 Points : 3 Test Equip. : R3132,ESPC
 Detector : PEAK/QP/Ave. Load Line : 10mm
 Line Mode : VA/VB Comment : T.Ohara
 Power Supply : DC 24V
 Limit1: [EN 55022] Class A(QP)
 Limit2: [EN 55022] Class A(Ave.)



Frequency [MHz]	Meter Reading (Ave.) [dBuV]	Meter Reading (QP) [dBuV]	Factor [dB]	Level(Ave.) [dBuV]	Level(QP) [dBuV]	Line	Limit(Ave.) [dBuV]	Limit(QP) [dBuV]	Margin(Ave.) [dB]	Margin(QP) [dB]
0.4345	32.3	33.4	9.9	42.2	43.3	VA	66	79	23.8	35.7
1.7399	21.7	21.3	9.9	31.6	31.2	VA	60	73	28.4	41.8
0.163	25.8	31.8	9.8	35.6	41.6	VB	66	79	30.4	37.4

RADIATED EMISSION

Model Name : SUCW32415 Temp. : 25
 Model No. : Humi. : 45
 Serial No. : Date : 2005/5/16 16:32
 Points : 3 Test Equip. : R3132,ESPC
 Detector : PEAK/QP Load Line : 10mm
 Polarization : Vertical Comment :
 Power Supply : DC 24V
 Limit: [EN 55022] Class A<3m>



Frequency [MHz]	Meter Reading (QP) [dBuV]	Ant. Type	Antenna Factor [dB/m]	Cable & Preamp [dB]	Level(QP) [dBuV/m]	Angle [°]	Height [cm]	Polar.	Limit [dBuV/m]	Margin [dB]
989.291	23.6	BL	25.4	-29.3	19.7	326	139	Vert.	57	37.3
31.225	25.4	BL	17.6	-32.3	10.7	231	125	Vert.	50	39.3
313.336	38.9	BL	13.4	-30.9	21.4	203	103	Vert.	57	35.6



Conditions

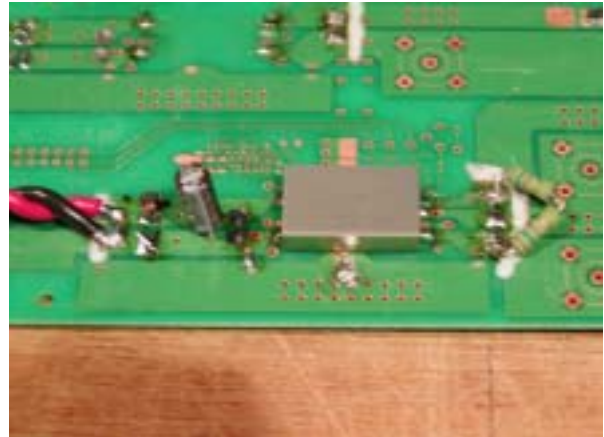
Test : EMI
 Model Name : SUCS/SUCW 324

○Photographs of Test Set-Up

LINE CONDUCTION



RADIATED EMISSION



○Testing circuitry

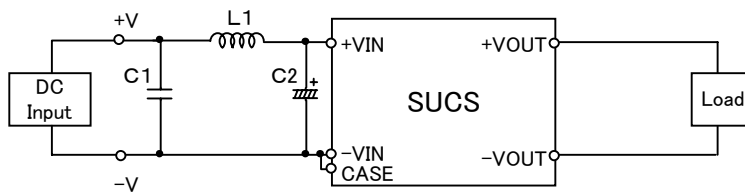


Fig.1 Testing circuitry 1

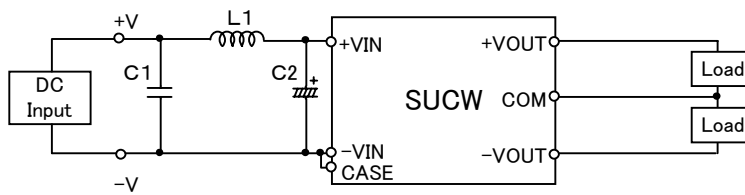


Fig.2 Testing circuitry 2

L1 :	10 μ H	CY3H-100	(KORIN ELECTRONICS)
C1 :	50V 0.47 μ F	C2012JB1H474K	(TDK)
C2 :	50V 47 μ F	UPW1H470M	(NICHICON)