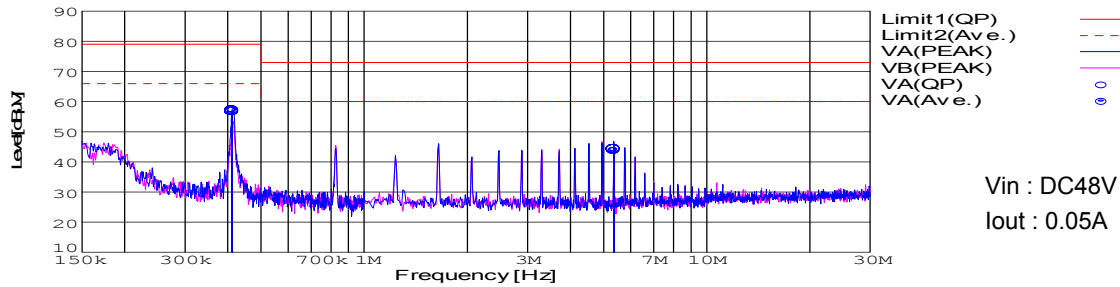


DATA SHEET		Date	17-May-05
Model	SUCW1R54815	Temp.	25degreeC
Test	EMI Line conduction & Radiated emission	Humid.	45 %RH
		Tested by	T.Ohara

LINE CONDUCTION

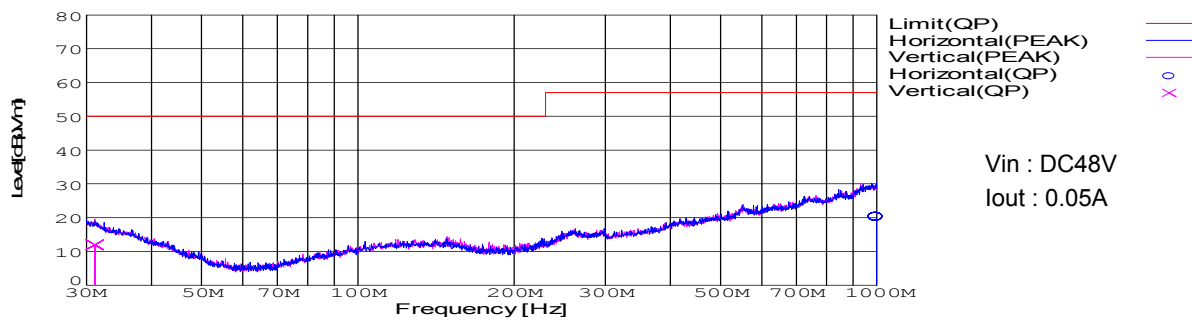
Model Name : SUCW1R54815 Temp. : 25degreeC
 Model No. : - Humi. : 45%
 Serial No. : - Date : 2004/10/14 19:33
 Points : 2 Test Equip. : R3132,ESPC
 Detector : PEAK/QP/Ave. Load Line : 10mm
 Line Mode : VA Comment : -
 Power Supply : DC 48V
 Limit1: [EN 55022] Class A(QP)
 Limit2: [EN 55022] Class A(Ave.)



Frequency [MHz]	Meter Reading (Ave.) [dBμV]	Meter Reading (QP) [dBμV]	Factor [dB]	Level(Ave.) [dBμV]	Level(QP) [dBμV]	Line	Limit(Ave.) [dBμV]	Limit(QP) [dBμV]	Margin(Ave.) [dB]	Margin(QP) [dB]
0.4119	47.2	46.6	9.9	57.1	56.5	VA	66	79	8.9	22.5
5.3594	34.2	34	10	44.2	44	VA	60	73	15.8	29

RADIATED EMISSION

Model Name : SUCW1R54815 Temp. : 25degreeC
 Model No. : - Humi. : 45%
 Serial No. : - Date : 2005/5/12 9:25
 Points : 2 Test Equip. : R3132,ESPC
 Detector : PEAK/QP Polarization : Hori. & Vert. Load Line : 10mm
 Power Supply : DC 48V Comment : -
 Limit: [EN 55022] Class A<3m>



Frequency [MHz]	Meter Reading (QP) [dBμV]	Ant. Type	Antenna Factor [dB/m]	Cable & Preamp [dB]	Level(QP) [dBμV/m]	Angle [°]	Height [cm]	Polar.	Limit [dBμV/m]	Margin [dB]
998.512	24.1	BL	25.3	-29.3	20.1	320	142	Hori.	57	36.9
31.132	26.7	BL	17.6	-32.3	12	6	102	Vert.	50	38

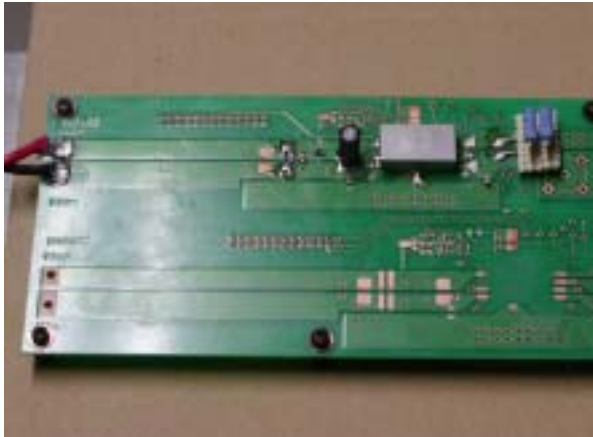


Conditions

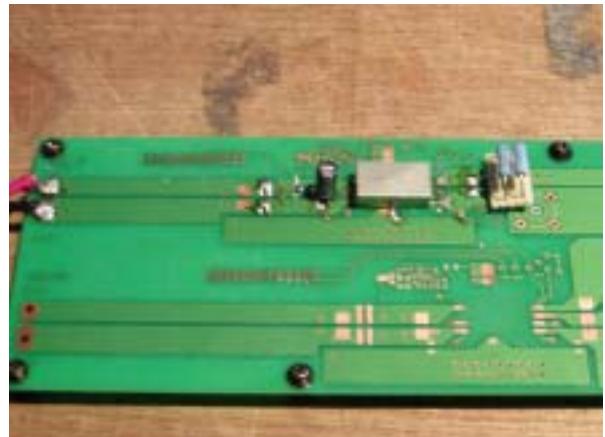
Test : EMI
 Model Name : SUCS/SUCW 1R548

○Photographs of Test Set-Up

LINE CONDUCTION



RADIATED EMISSION



○Testing circuitry

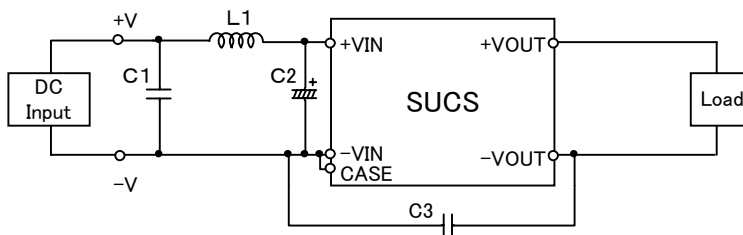


Fig.1 Testing circuitry 1

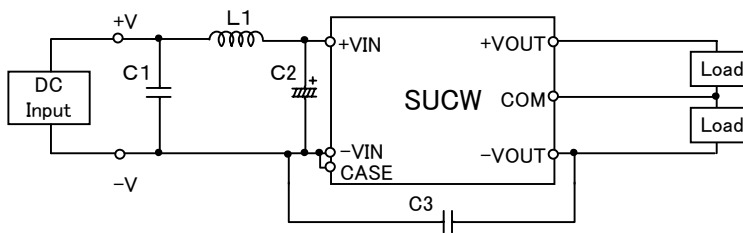


Fig.2 Testing circuitry 2

L1 :	10 μ H	GLF2518T100K	(TDK)
C1 :	100V 0.47 μ F	C3216JB2A474K	(TDK)
C2 :	100V 10 μ F	UPW2A100M	(NICHICON)
C3 :	1000V 470pF	GRM31BR33A471K	(MURATA)