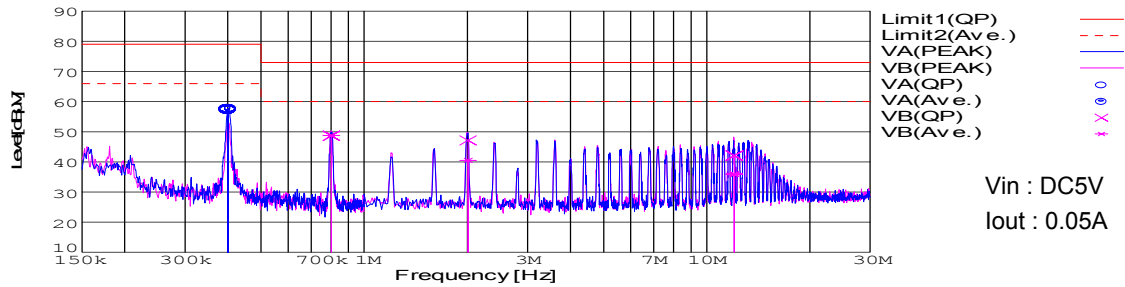


DATA SHEET		Date	17-May-05
Model	SUCW1R50515	Temp.	25degreeC
Test	EMI Line conduction & Radiated emission	Humid.	45 %RH
		Tested by	T.Ohara

**LINE CONDUCTION**

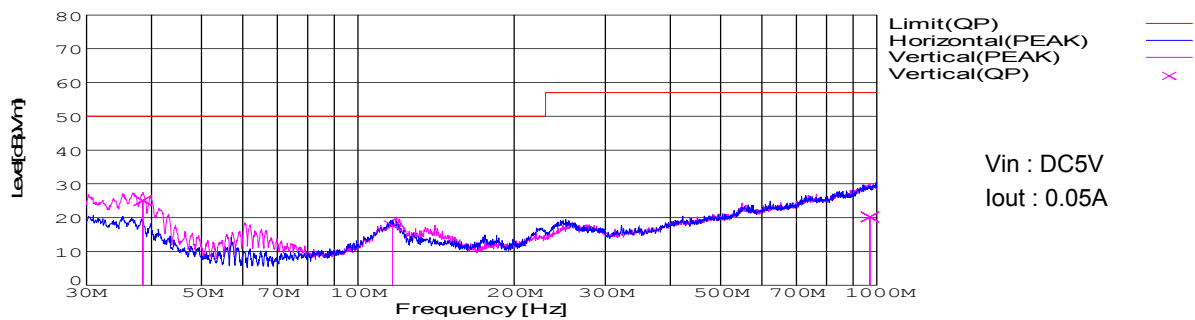
Model Name : SUCW1R50515 Temp. : 25degreeC  
 Model No. : - Humi. : 45%  
 Serial No. : - Date : 2004/10/7 11:26  
 Points : 4 Test Equip. : R3132,ESPC  
 Detector : PEAK/QP/Ave. Load Line : 10mm  
 Line Mode : VA/VB Comment : -  
 Power Supply : DC 5V  
 Limit1: [EN 55022] Class A(QP)  
 Limit2: [EN 55022] Class A(Ave.)



Frequency [MHz]	Meter Reading (Ave.) [dBμV]	Meter Reading (QP) [dBμV]	Factor [dB]	Level(Ave.) [dBμV]	Level(QP) [dBμV]	Line	Limit(Ave.) [dBμV]	Limit(QP) [dBμV]	Margin(Ave.) [dB]	Margin(QP) [dB]
0.4005	47.7	47.2	9.9	57.6	57.1	VA	66	79	8.4	21.9
0.8014	38.9	38.8	9.9	48.8	48.7	VB	60	73	11.2	24.3
2.0121	30.6	37.3	9.9	40.5	47.2	VB	60	73	19.5	25.8
12.0451	25.8	32	10.1	35.9	42.1	VB	60	73	24.1	30.9

**RADIATED EMISSION**

Model Name : SUCW1R50515 Temp. : 25degreeC  
 Model No. : - Humi. : 45%  
 Serial No. : - Date : 2005/5/10 14:15  
 Points : 3 Test Equip. : R3132,ESPC  
 Detector : PEAK/QP Polarization : Vertical Load Line : 10mm  
 Power Supply : DC 5V Comment : -  
 Limit: [EN 55022] Class A<3m>



Frequency [MHz]	Meter Reading (QP) [dBμV]	Ant. Type	Antenna Factor [dB/m]	Cable & Preamp [dB]	Level(QP) [dBμV/m]	Angle [°]	Height [cm]	Polar.	Limit [dBμV/m]	Margin [dB]
38.505	43.5	BL	13.8	-32.2	25.1	170	104	Vert.	50	24.9
116.663	38.5	BL	10.9	-31.7	17.7	11	156	Vert.	50	32.3
969.631	24.2	BL	25.3	-29.3	20.2	10	104	Vert.	57	36.8

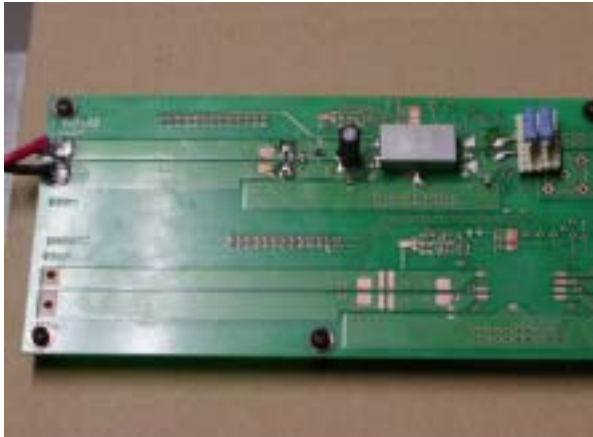


Conditions

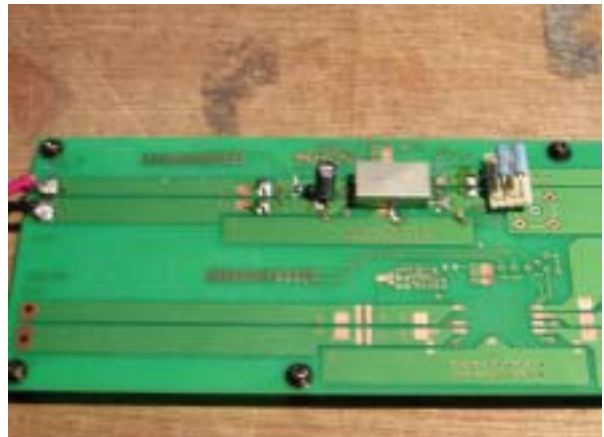
Test : EMI  
 Model Name : SUCS/SUCW 1R505

○Photographs of Test Set-Up

LINE CONDUCTION



RADIATED EMISSION



○Testing circuitry

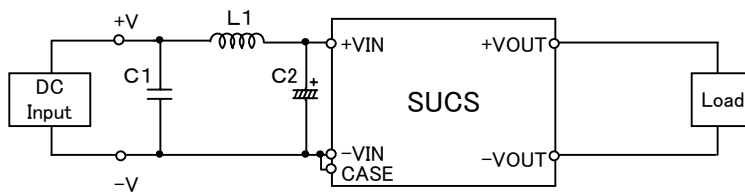


Fig.1 Testing circuitry 1

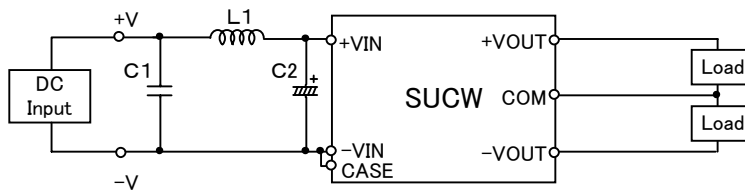


Fig.2 Testing circuitry 2

L1 :	2.2 $\mu$ H	GLF2518T2R2M	(TDK)
C1 :	16V 1 $\mu$ F	C2012JB1C105K	(TDK)
C2 :	16V 100 $\mu$ F	UPW1C101M	(NICHICON)