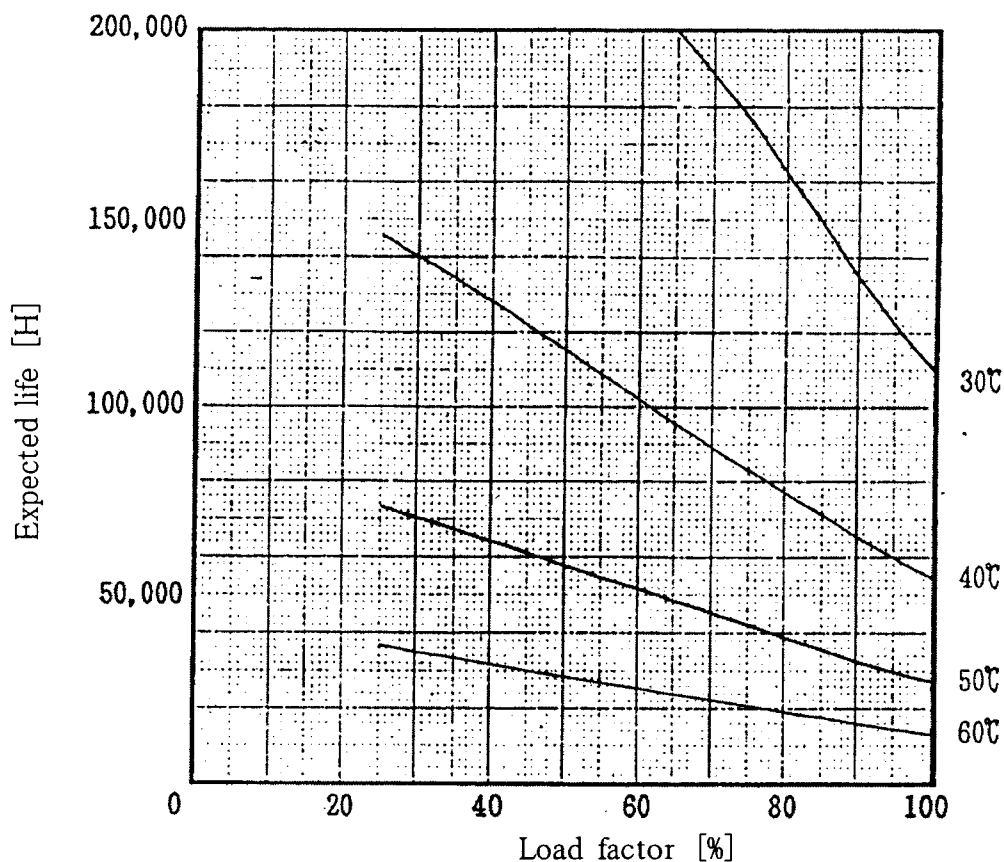


PMC30-1 Expected Life : 推定寿命



• Above expected life time is calculated according our calculation standard.

上記推定寿命は、当社算出基準に従い算出したものです。

• Over the area of 100,000 hours, the degradation of sealing rubber, etc., is not included in the calculation.

10万時間以上の領域では、封ロムの劣化等の影響は、計算式には含まれていません。

• Please refer derating curve shown in instruction manual about the maximum value of ambient temperature.

周囲温度の上限は、取扱説明書のデレーティング表をご参照ください。

Conditions

(1) Input voltage

AC100V 60Hz

(2) Output voltage/
current

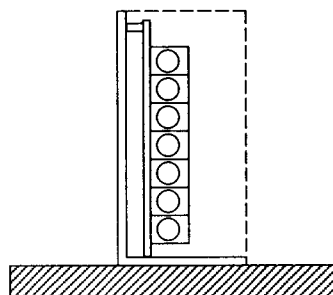
DC OUTPUT	Load factor			
	100%	75%	50%	25%
5V	3.0A	2.25A	1.5A	0.75A
12V	1.2A	0.90A	0.60A	0.30A
-12V	0.3A	0.225A	0.15A	0.075A

(3) Cooling method

Convection

(4) Mounting method

Refer below



Mounting method(A)