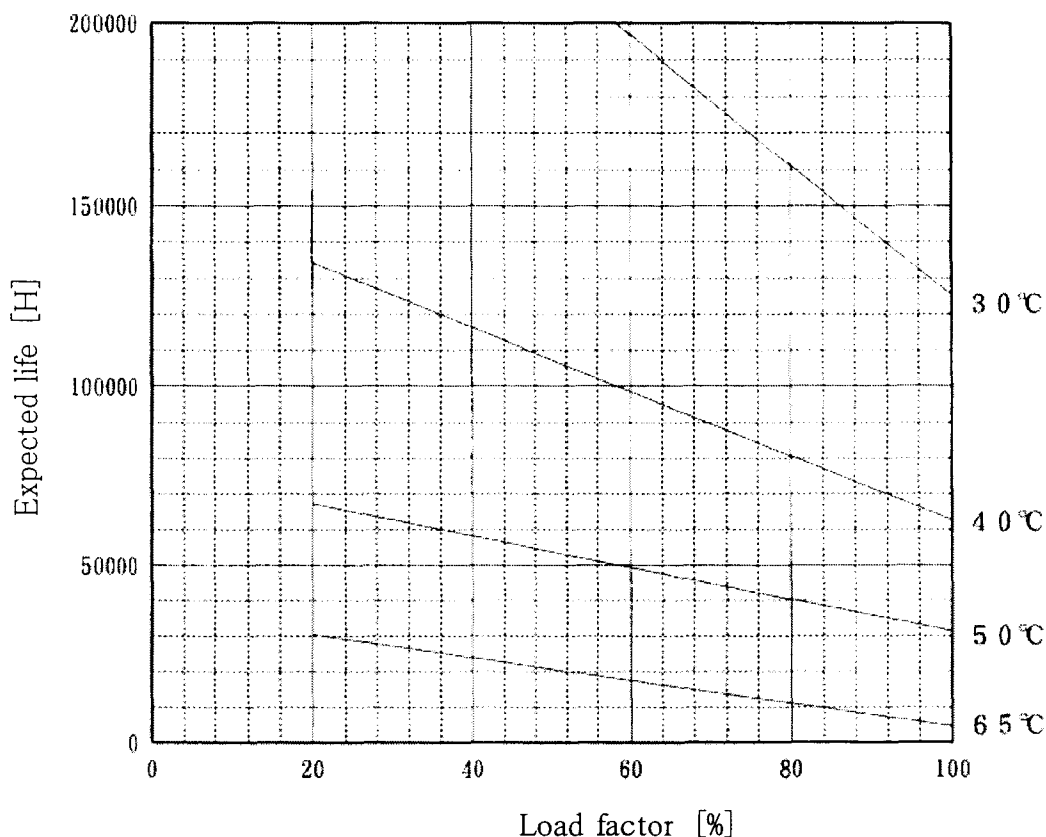


PAA100F-12 Expected Life : 推定寿命



- Above expected life time is calculated according our calculation standard.  
上記推定寿命は、当社算出基準に従い算出したものです。
- Over the area of 100,000 hours, the degradation of sealing rubber, etc., is not included in the calculation.  
10万時間以上の領域では、封口ゴムの劣化等の影響は、計算式には含まれていません。
- Please refer derating curve shown in instruction manual about the maximum value of ambient temperature.  
周囲温度の上限は、取扱説明書のデレーティング表をご参照ください。

Conditions

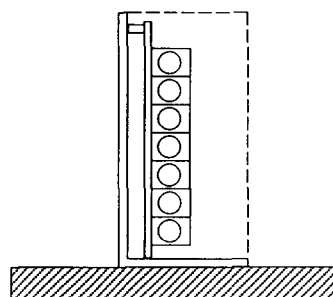
(1)Input voltage AC85~264V 60Hz

(2)Output voltage/  
current

DC OUTPUT	Load factor			
	100%	75%	50%	25%
12V	8.5A	6.375A	4.25A	2.125A
-	-	-	-	-
-	-	-	-	-

(3)Cooling method Convection

(4)Mounting method Refer below



Mounting method(A)