

Temperature increase of main components: 主要部品温度上昇

Model : RBC300F  
Module : S,T,U

1. Conditions

- (1) Input : AC 85 ~ 264 [V]
- (2) Output : Rated output \*Derating is required at AC85~90[V] input.
- (3) Mounting method : Shown as Fig.1.1

2. Result

No.	Parts name	Symbol No.	Increase ( $\Delta T$ ) [deg]				Rated temp. [°C]	Reference
			S 12V	T 24V	U 48V			
1	Line Filter	L101	40	51	51		120	
2	Rectifier (Input)	SS101	65	69	69		150	Junction Temp.
3	Rectifying Diode (PFC)	SS102	48	53	53		150	Junction Temp.
4	Choke Coil (PFC)	L103	62	62	62		120	
5	Transistor (PFC)	TR101	58	64	64		150	Junction Temp.
6	Input Capacitor	C104	29	33	33		105	
7	Switching Transistor	TR201	50	58	56		150	Junction Temp.
8	Transformer	T201	49	51	46		130	
9	Rectifying Transistor (Output)	TR511	54	54	-		150	Junction Temp.
10	Rectifying Transistor (Output)	SS511	-	-	61		150	Junction Temp.
11	Output Choke	L551	45	38	33		120	
12	Output Capacitor	C551	31	26	22		105	
13								
14								
15								
16								
17								
18								
19								
20								

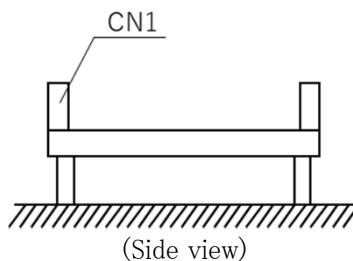


Fig.1.1 Mounting method (Nomal position)

\*All information presented herein are not guaranteed.  
\*本資料は参考資料であり、その内容を保証するものではありません。