

Temperature increase of main components: 主要部品温度上昇

Model : Output modules for RB series
 Module : P,Q

1. Conditions

- (1) Input : AC 85 ~ 264 [V]
- (2) Output : Rated output *Derating is required at AC85~90[V] input.
- (3) Mounting method : Shown as Fig.1.1

2. Result

No.	Parts name	Symbol No.	Increase (ΔT) [deg]				Rated temp. [°C]	Reference
			P $\pm 12V$	Q $\pm 15V$				
1	Switching Transistor	TR101	38	34			150	Junction Temp.
2	Transformer	T101	39	34			130	
3	Rectifying Diode (Output)	D501	59	51			150	Junction Temp.
4	Output Choke	L501	35	34			120	
5	Output Capacitor	C505	40	30			125	
6								
7								
8								
9								
10								
11								
12								
13								
14								
15								
16								
17								
18								
19								
20								

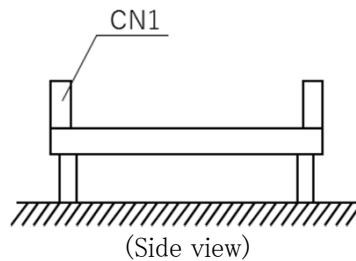


Fig.1.1 Mounting method
(Nomal position)

*All information presented herein are not guaranteed.
 *本資料は参考資料であり、その内容を保証するものではありません。