

Temperature increase of main components: 主要部品温度上昇

Model : Output modules for RB series  
 Module : G,H,J,K,L,M

1. Conditions

- (1) Input : AC 85 ~ 264 [V]
- (2) Output : Rated output \*Derating is required at AC85~90[V] input.
- (3) Mounting method : Shown as Fig.1.1

2. Result

No.	Parts name	Symbol No.	Increase ( $\Delta T$ ) [deg]						Rated temp. [°C]	Reference
			G 3.3V	H 5V	J 12V	K 16.5V	L 24V	M 48V		
1	Switching Transistor	TR101	40	46	38	40	41	38	150	Junction Temp.
2	Transformer	T101	40	47	44	41	48	42	130	
3	Rectifying Transistor (Output)	TR501	52	58	41	43	-	-	150	Junction Temp.
4	Rectifying Diode (Output)	D501	-	-	-	-	64	-	150	Junction Temp.
5	Rectifier (Output)	SS501	-	-	-	-	-	50	175	Junction Temp.
6	Output Choke	L501	45	52	33	28	33	37	120	
7	Output Capacitor	C505	29	31	23	21	24	20	105	
8										
9										
10										
11										
12										
13										
14										
15										
16										
17										
18										
19										
20										

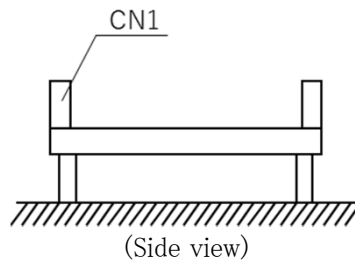


Fig.1.1 Mounting method  
(Nomal position)

\*All information presented herein are not guaranteed.  
 \*本資料は参考資料であり、その内容を保証するものではありません。