

Temperature increase of main components: 主要部品温度上昇

Model : Output modules for RB series  
 Module : B,C,D

1. Conditions

- (1) Input : AC 85 ~ 264 [V]
- (2) Output : Rated output \*Derating is required at AC85~90[V] input.
- (3) Mounting method : Shown as Fig.1.1

2. Result

No.	Parts name	Symbol No.	Increase ( $\Delta T$ ) [deg]				Rated temp. [°C]	Reference
			B 5V	C 12V	D 24V			
1	Switching Transistor	TR101	33	37	32		150	Junction Temp.
2	Transformer	T101	33	41	39		130	
3	Rectifying Transistor (Output)	TR501	37	-	-		150	Junction Temp.
4	Rectifying Diode (Output)	D501	-	61	40		150	Junction Temp.
5	Output Choke	L501	32	31	26		120	
6	Output Capacitor	C505	22	24	19		105	
7								
8								
9								
10								
11								
12								
13								
14								
15								
16								
17								
18								
19								
20								

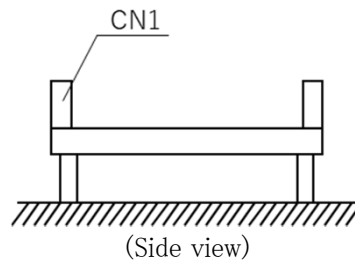


Fig.1.1 Mounting method  
(Nomal position)

\*All information presented herein are not guaranteed.  
 \*本資料は参考資料であり、その内容を保証するものではありません。