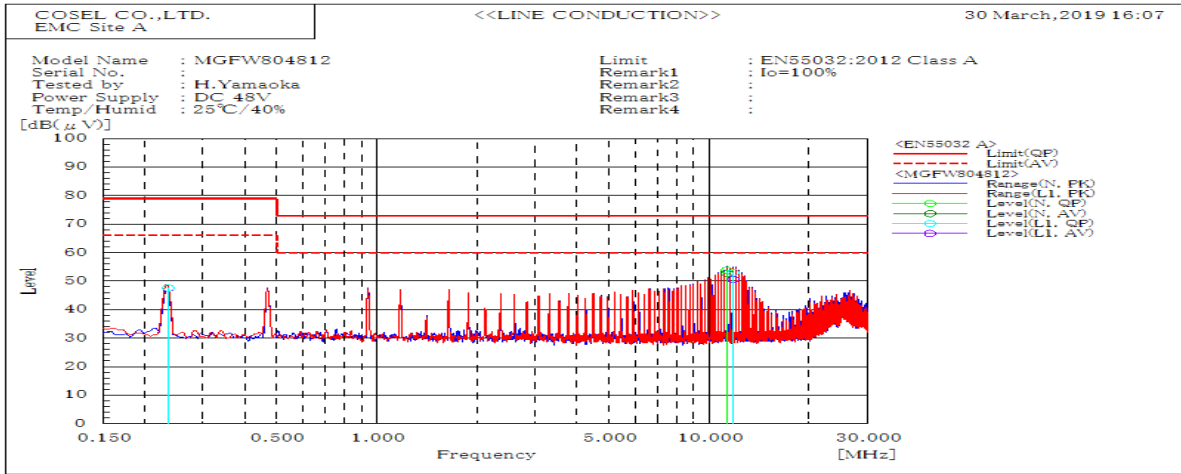
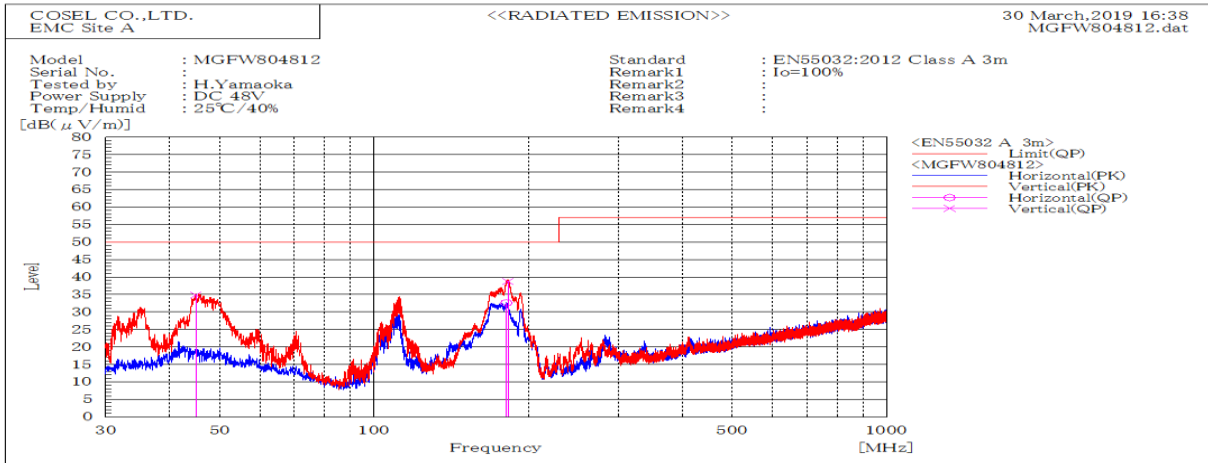


DATA SHEET		Date	23-Apr-19
Model	MGFW804812	Temp.	25 degreeC
Test	EMI Line conduction & Radiated emission	Humid.	40 %RH
		Tested by	H.Yamaoka



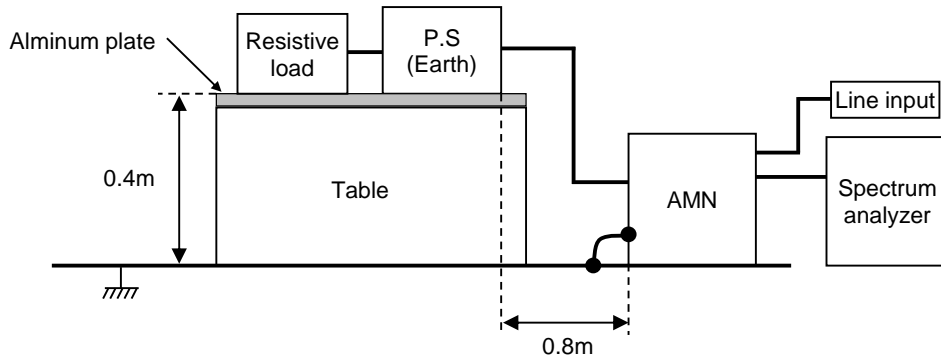
Frequency MHz	Line	Level		Limit		Margin		Pass/Fail	Remark
		dB(μV)		dB(μV)		dB			
		QP	AV	QP	AV	QP	AV		
0.236	L1	47.7	47.6	79	66	31.3	18.4	Pass	
11.784	L1	53.1	50.6	73	60	19.9	9.4	Pass	
11.305	N	53.8	52.8	73	60	19.2	7.2	Pass	



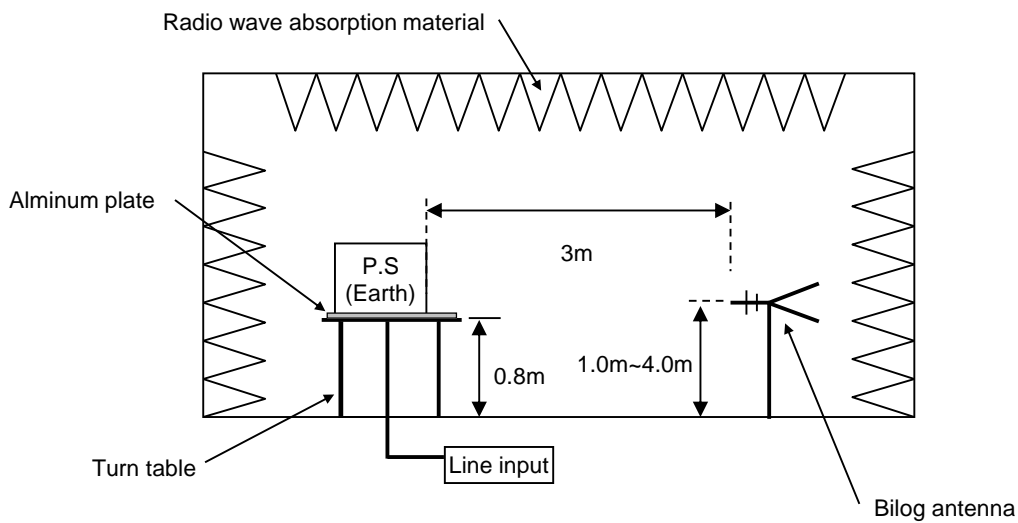
Frequency MHz	Polarization	Stability	Level		Margin dB	Pass/Fail	Height cm	Angle deg	Remark
			QP	QP					
182.678	V	Stable	38.7	50	11.3	Pass	100	54.7	
45.018	V	Stable	34.8	50	15.2	Pass	100.2	118.1	
181.352	H	Stable	32.6	50	17.4	Pass	127.2	24.2	

DATA SHEET		Date	23-Apr-19
Model	Circuit used for measurement	Temp.	25 degreeC
Test	EMI Line conduction & Radiated emission	Humid.	40 %RH
		Tested by	H.Yamaoka

1. Line conduction



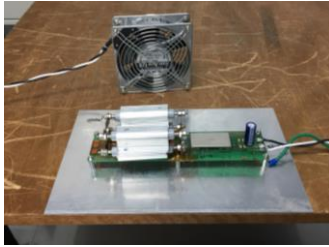
2. Radiated emission



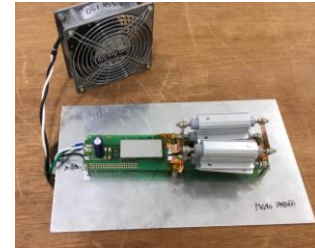
Conditions

Test : EMI
 Model Name : MGFS80□□

○Photographs of Test Set-Up
LINE CONDUCTION



RADIATED EMISSION



○Testing circuitry

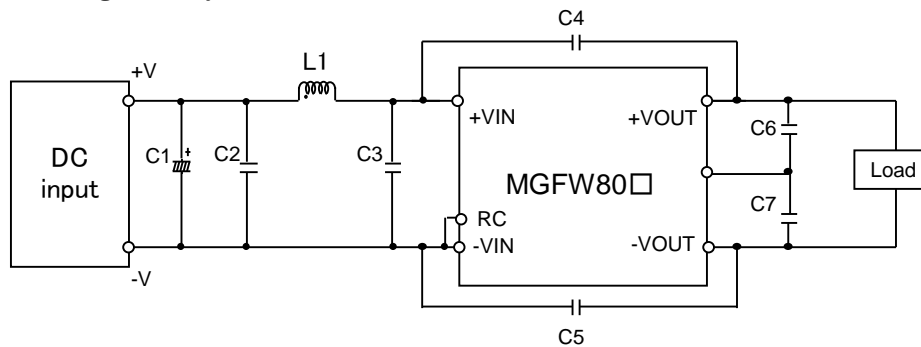


Fig.1 Testing circuitry

- C1 : MGFS8024□□ 63V 470 μ F Electrolytic capacitor (ELXZseries NIPPON CHEMI-CON)
 MGFS8048□□ 100V 220 μ F Electrolytic capacitor (KYseries NIPPON CHEMI-CON)
- C2 : MGFS8024□□ 50V 10 μ F Ceramic capacitor (GRM32ER71H106K MURATA MANUFACTURING)
 MGFS8048□□ 100V 4.7 μ F Ceramic capacitor (HMK325C7475K TAIYOU YUDEN)
- C3 : MGFS8024□□ 50V 10 μ F Ceramic capacitor (GRM32ER71H106K MURATA MANUFACTURING)
 MGFS8048□□ 100V 4.7 μ F Ceramic capacitor (HMK325C7475K TAIYOU YUDEN)
- C4,C5 : MGFS8024□□ 2kV 2200pF Ceramic capacitor (GR443QR73D222KW01 MURATA MANUFACTURING)
 MGFS8048□□ 2kV 2200pF Ceramic capacitor (GR443QR73D222KW01 MURATA MANUFACTURING)
- C6 : MGFS8024□□ 25V 22 μ F Ceramic capacitor (GRM32ER71E226K MURATA MANUFACTURING)
 MGFS8048□□ 25V 22 μ F Ceramic capacitor (GRM32ER71E226K MURATA MANUFACTURING)
- C7 : MGFS8024□□ 25V 22 μ F Ceramic capacitor (GRM32ER71E226K MURATA MANUFACTURING)
 MGFS8048□□ 25V 22 μ F Ceramic capacitor (GRM32ER71E226K MURATA MANUFACTURING)
- L1 : MGFS8024□□ 15.0A 1.0 μ H Inductor (SRP7050TA-1R0M BOURNS)
 MGFS8048□□ 8.0A 3.3 μ H Inductor (SRP7050TA-3R3M BOURNS)