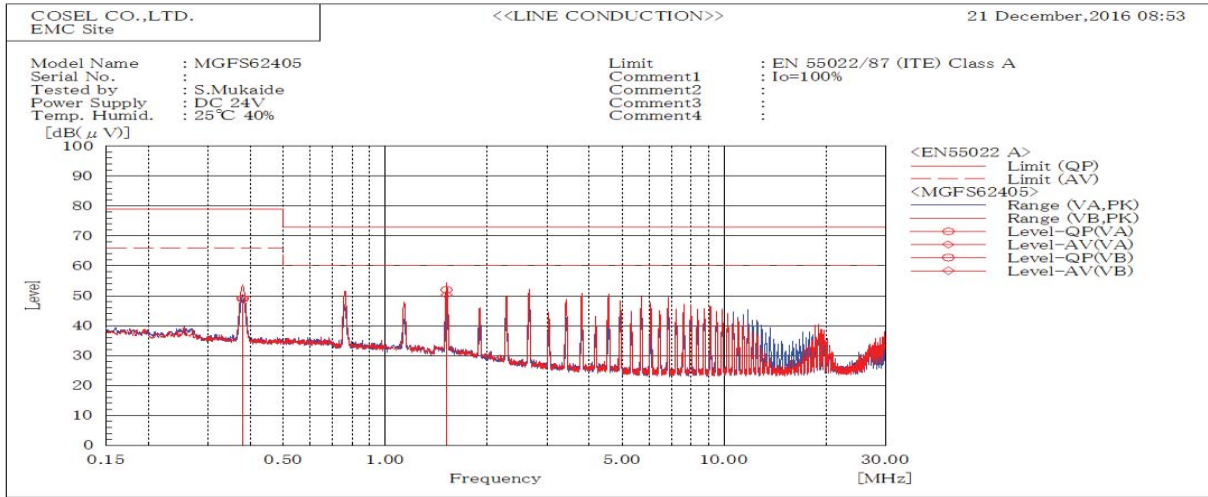
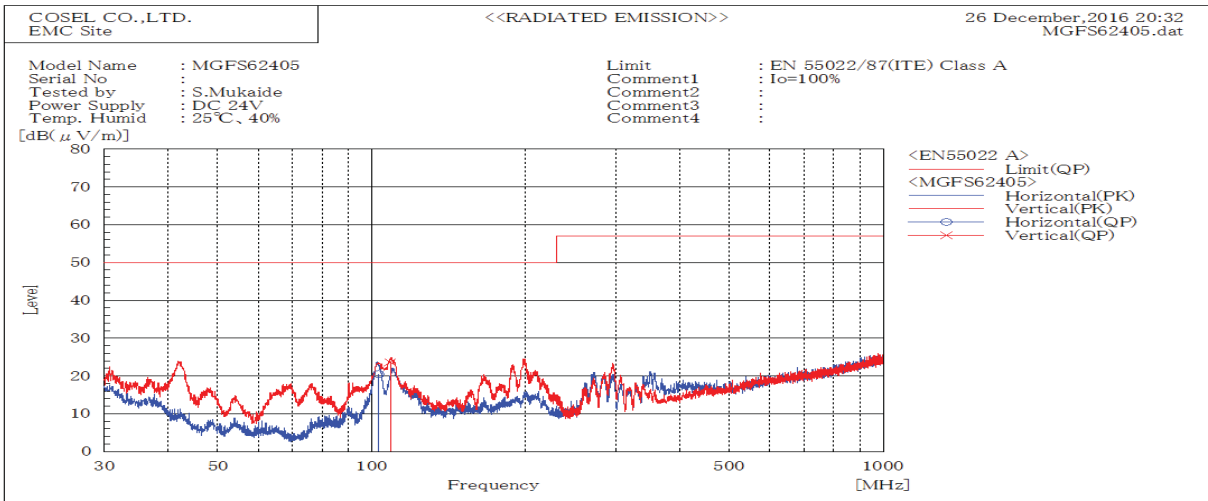


<b>DATA SHEET</b>		Date	06-Jan-17
Model	MGFS62405	Temp.	25 degreeC
Test	EMI Line conduction & Radiated emission	Humid.	40 %RH
		Tested by	S.Mukaide



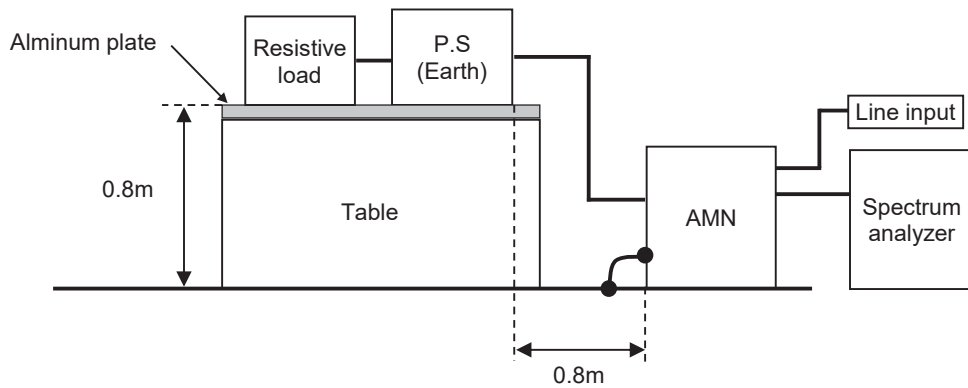
Frequency MHz	Line Phase	Level dB(uV)		Limit dB(uV)		Margin dB		Pass/Fail	Remark
		QP	AV	QP	AV	QP	AV		
0.37932	VA	49.1	49	79	66	29.9	17	Pass	
1.51818	VB	52	50.3	73	60	21	9.7	Pass	



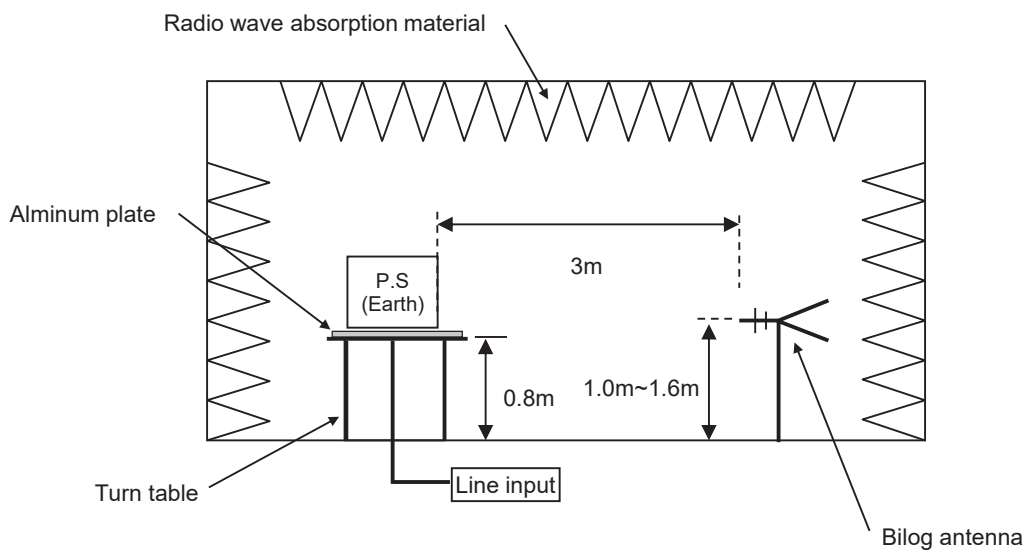
Frequency MHz	Polarization	Stability	Reading dB(uV)	Limit dB(uV/m)	Margin dB(uV/m)	Pass/Fail	Height cm	Angle deg	Remark
			QP	QP	QP				
102.993	H	Stable	20.5	50.0	29.5	Pass	146	57	
108.696	V	Stable	23.6	50.0	26.4	Pass	104	60	

DATA SHEET		Date	06-Jan-17
Model	Circuit used for measurement	Temp.	25 degreeC
Test	EMI Line conduction & Radiated emission	Humid.	40 %RH
		Tested by	S.Mukaide

**1. Line conduction**



**2. Radiated emission**

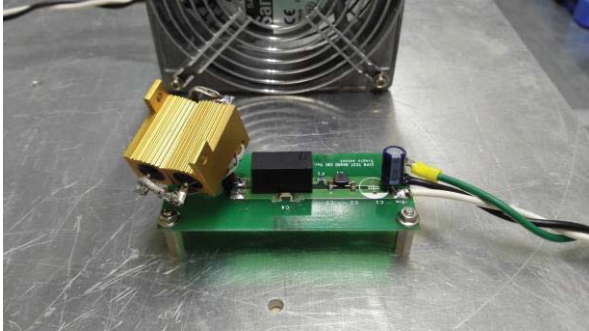


## Conditions

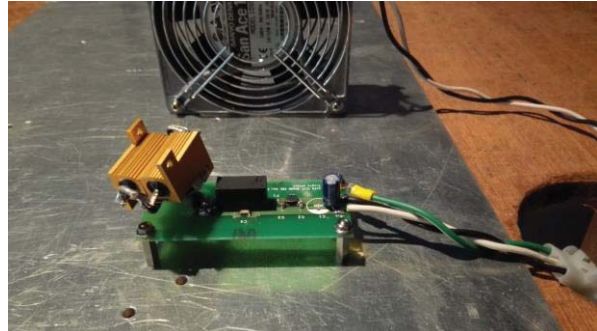
Test : EMI  
 Model Name : MGFS6□□

○Photographs of Test Set-Up

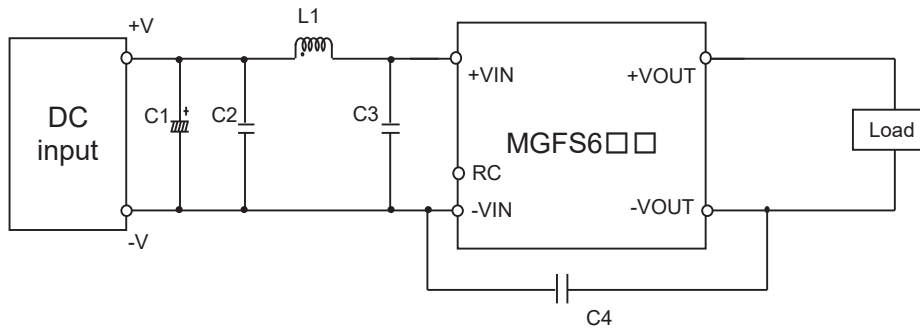
### LINE CONDUCTION



### RADIATED EMISSION



○Testing circuitry



- C1 : MGFS624□□ 50V 100  $\mu$ F Electric capacitor (LXZseries NIPPON CHEMI-CON)  
 MGFS648□□ -
- C2 : MGFS624□□ 50V 4.7  $\mu$ F Ceramic capacitor (GRM31CR71H475K MURATA MANUFACTURING)  
 MGFS648□□ 100V 2.2  $\mu$ F Ceramic capacitor (GRM31CC72A225K MURATA MANUFACTURING)
- C3 : MGFS624□□ 50V 4.7  $\mu$ F Ceramic capacitor (GRM31CR71H475K MURATA MANUFACTURING)  
 MGFS648□□ 100V 2.2  $\mu$ F Ceramic capacitor (GRM31CC72A225K MURATA MANUFACTURING)
- C4 : MGFS624□□ 2kV 470pF Ceramic capacitor (GR442QR73D471K MURATA MANUFACTURING)  
 MGFS648□□ 2kV 2200pF Ceramic capacitor (GR443QR73D222K MURATA MANUFACTURING)
- L1 : MGFS624□□ 1600mA 10  $\mu$ H Inductor(LQH5BPN100MT0 MURATA MANUFACTURING)  
 MGFS648□□ 1050mA 22  $\mu$ H Inductor(LQH5BPN220MT0 MURATA MANUFACTURING)