

Temperature increase of main components: 主要部品温度上昇

Model: LFA30F

1. Conditions

- (1) Input :AC 85 ~ 264 [V]
- (2) Output :Rated output *Derating is required at AC85 - 90[V] input.
- (3) Mounting method :Shown as Fig.1.1

2. Result

No.	Parts name	Symbol No.	Increase (ΔT)					Rated temp. [°C]	Reference
			[deg]						
			3.3V	5V	12V	15V	24V		
1	Line filter	L101	36	65	56	53	58	130	
2	Rectifier(Input)	SS101	38	57	49	48	52	150	Junction Temp.
3	Input capacitor	C104	22	29	24	26	27	105	
4	Switching transistor	TR201	57	69	67	69	65	150	Junction Temp.
5	Transformer	T101	44	55	49	49	49	130	
6	Rectified diode(Output)	SS501	63	68	62	57	47	150	Junction Temp.
7	Output choke	L501	56	58	36	31	28	120	
8	Output capacitor	C509	28	29	21	20	17	105	
9									
10									
11									
12									
13									
14									
15									
16									
17									
18									
19									
20									

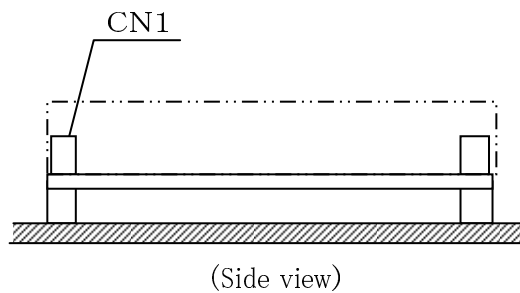


Fig.1.1 Mounting method
(Normal position)

*All information presented herein are not guaranteed.
*本資料は参考資料であり、その内容を保証するものではありません。