

Date : Apr.24,2002

Temperature increase of main components: 主要部品温度上昇

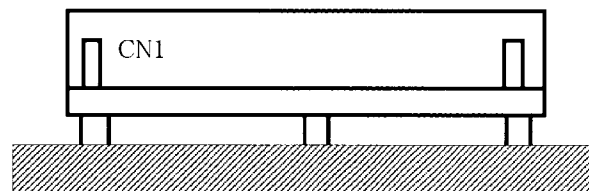
Model: LCC30A-1

1. Conditions

- (1) Input : AC 85~132V
- (2) Output : 100%
- (3) Mounting method : Shown as Fig.1.1

2. Result

No.	Parts name	Symbol No.	Increase (ΔT)			Rated temp. [°C]	Reference
			[deg]				
			AC85V	AC100V	AC132V		
1	Input Diode	SS11	77	70	61	150	Junction Temp.
2	Line Filter	L11	58	51	40	120	
3	Input Capacitor	C13	40	36	33	105	
4	Switching Transistor	TR12	64	56	52	150	Junction Temp.
5	Transformer	T11	60	58	55	130	
6	Rectified Diode(Output)(V1)	SS51	56	55	53	150	Junction Temp.
7	Rectified Diode(Output)(V2)	D71	64	64	62	150	Junction Temp.
8	Rectified Diode(Output)(V3)	D91	52	52	50	150	Junction Temp.
9	Output Choke	L51	32	32	32	120	
10	Output Capacitor (V1)	C51	33	32	31	105	
11	Output Capacitor (V1)	C52	28	27	27	105	
12	Output Capacitor (V2)	C72	40	39	37	105	
13	Output Capacitor (V3)	C91	42	40	39	105	
14	Voltage Regulator(V2)	IC71	69	68	67	150	Junction Temp.
15	Voltage Regulator(V3)	IC91	63	62	61	150	Junction Temp.
16							
17							
18							
19							
20							



(Side view)

Fig.1.1 Mounting method
(Normal position)