

Temperature increase of main components: 主要部品温度上昇

Model: LCA50S-48

1. Conditions

- (1) Input : AC 85 ~ 132 [V]
- (2) Output : 1.3 [A]
- (3) Mounting method : Shown as Fig.1.1

2. Result

No.	Parts name	Symbol No.	Increase ( $\Delta T$ ) [deg]	Rated temp[°C]	備考
1	Line filter	L11	68.0	120	
2	Rectifier(Input)	SS11	78.0	150	Junction Temp
3	Inout Capacitor	C15	39.0	105	
4	Swiching transistor	TR11	68.0	150	Junction Temp
5	Transformer	T11	58.0	120	
6	Rectified diode(Output)	SS51	65.0	150	Junction Temp
7	Output Choke	L54	34.0	120	
8	Output Capacitor	C53	20.0	105	
9	Output Capacitor	C54	16.0	105	
10					
11					
12					
13					
14					
15					
16					
17					
18					
19					
20					

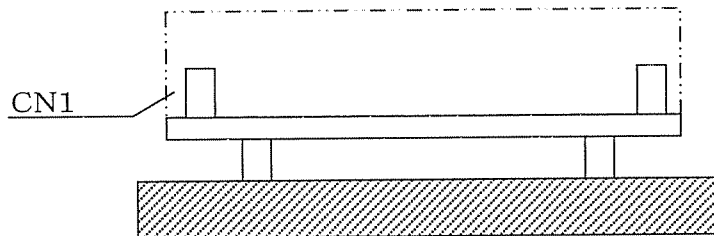


Fig.1.1 Mounting method  
(Normal position)