

Date : Sep.16,1999

Temperature increase of main components: 主要部品温度上昇

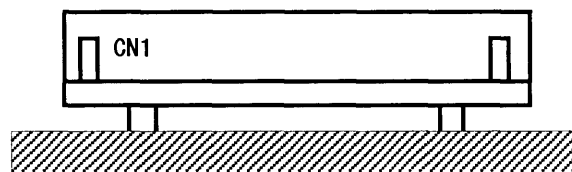
Model : LCA50S

1. Conditions

- (1) Input : AC 85 ~ 132 [V]
- (2) Output : Rated output
- (3) Mounting method : Shown as Fig.1.1

2. Result

No.	Parts name	Symbol No.	Increase ( $\Delta T$ )						Rated temp. [°C]	Reference
			[deg]							
			5V	12V	15V	24V				
1	Line Filter	L11	55	57	54	58			120	
2	Rectifier(Input)	SS11	75	73	74	76			150	Junction Temp.
3	Input Capacitor	C15	30	31	32	33			105	
4	Switching Transistor	TR11	70	65	67	64			150	Junction Temp.
5	Transformer	T11	57	55	55	58			120	
6	Rectified Diode(Output)	SS51	77	62	58	66			150	Junction Temp.
7	Output Choke	L54	48	37	32	33			120	
8	Output Capacitor	C53	32	23	18	15			105	
9	Output Capacitor	C54	25	18	14	-			105	
10										
11										
12										
13										
14										
15										
16										
17										
18										
19										
20										



(Side view)

Fig.1.1 Mounting method  
(Normal position)