

Temperature increase of main components: 主要部品温度上昇

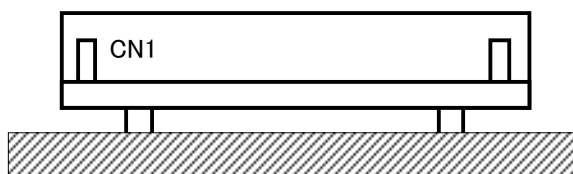
Model: LCA30S-48

1. Conditions

- (1) Input : AC 85 ~ 132 [V]
- (2) Output : Rated output
- (3) Mounting method : Shown as Fig.1.1

2. Result

No.	Parts name	Symbol No.	Increase ( $\Delta T$ )					Rated temp. [°C]	Reference
			[deg]						
			48V						
1	LINE FILTER	L11	55				120		
2	RECTIFIER(INPUT)	SS11	70				150	JUNCTION TEMP.	
3	SWITCHING TRANSISTOR	TR12	48				150	JUNCTION TEMP.	
4	INPUT CAPACITOR	C12	27				105		
5	TRANSFORMER	T11	50				120		
6	RECTIFIED DIODE(OUTPUT)	SS51	41				150	JUNCTION TEMP.	
7	OUTPUT CAPACITOR	C54	14				105		
8	OUTPUT CAPACITOR	C55	18				105	JUNCTION TEMP.	
9	OUTPUT CAPACITOR	C59	8				105		
10	OUTPUT CHOKE	L51	14				120		
11									
12									
13									
14									
15									
16									
17									
18									
19									
20									



(Side view)

Fig.1.1 Mounting method  
(Normal position)