

Temperature increase of main components: 主要部品温度上昇

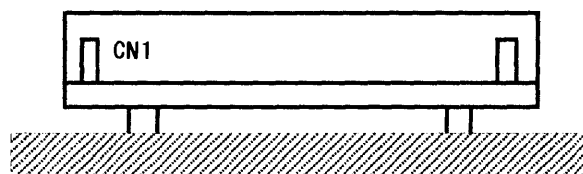
Model : LCA30S

1. Conditions

- (1) Input : AC 85 ~ 132 [V]
- (2) Output : Rated output
- (3) Mounting method : Shown as Fig.1.1

2. Result

No.	Parts name	Symbol No.	Increase ( $\Delta T$ )					Rated temp. [°C]	Reference
			[deg]						
			5V	12V	15V	24V			
1	Line Filter	L11	56	55	52	52		120	
2	Rectifier(Input)	SS11	60	58	59	58		150	Junction Temp.
3	Input Capacitor	C12	27	26	24	20		105	
4	Switching Transistor	TR12	50	41	42	43		150	Junction Temp.
5	Transformer	T11	40	42	38	41		120	
6	Rectified Diode(Output)	SS51	73	56	50	45		150	Junction Temp.
7	Output Capacitor	C52	36	18	15	16		105	
8	Output Capacitor	C53	34	17	13	-		105	
9	Output Capacitor	C54	26	-	-	-		105	
10	Output Capacitor	C55	28	-	-	-		105	
11									
12									
13									
14									
15									
16									
17									
18									
19									
20									



(Side view)

Fig. 1.1 Mounting method  
(Normal position)