

Date : Aug.26,2008

Temperature increase of main components: 主要部品温度上昇

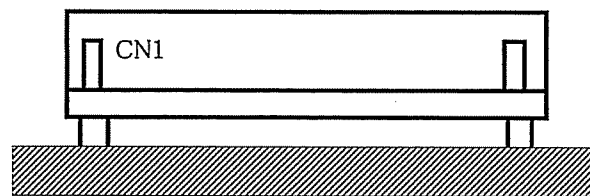
Model : LCA100S

1. Conditions

- (1) Input : AC 85 ~ 132 [V]
- (2) Output : Rated output
- (3) Mounting method : Shown as Fig.1.1

2. Result

No.	Parts name	Symbol No.	Increase (ΔT)				Rated temp. [°C]	Reference
			[deg]					
			5V	12V	15V	24V		
1	Line Filter	L11	47	50	45	45	120	
2	Rectifier(Input)	SS11	77	73	69	70	150	Junction Temp.
3	Input Capacitor	C14	22	19	19	19	105	
4	Input Capacitor	C15	19	19	19	18	105	
5	Switching Transistor	TR21	68	57	50	46	150	Junction Temp.
6	Transformer	T11	53	42	41	39	120	
7	Rectified Diode(Output)	SS51	74	64	54	-	150	Junction Temp.
8	Rectified Diode(Output)	SS52	77	64	53	56	150	Junction Temp.
9	Output Choke	L51	57	49	42	43	120	
10	Output Capacitor	C53	38	22	19	18	105	
11	Output Capacitor	C54	36	20	16	-	105	
12								
13								
14								
15								
16								
17								
18								
19								
20								



(Side view)

Fig.1.1 Mounting method
(Normal position)