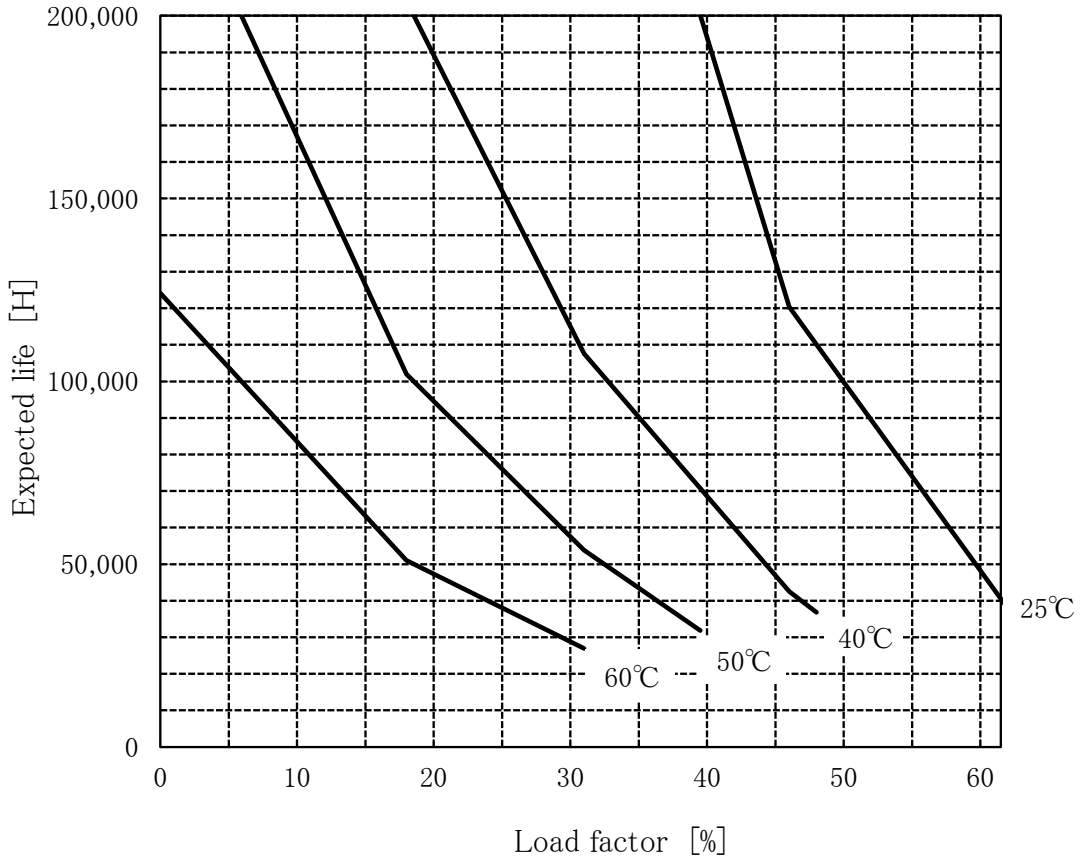


GHA700F-12-J1 Expected Life : 推定寿命



- Above expected life time is calculated according our calculation standard.
上記推定寿命は、当社算出基準に従い算出したものです。
- Over the area of 150,000 hours, the degradation of sealing rubber, etc., is not included in the calculation.
10万時間以上の領域では、封ロゴムの劣化等の影響は、計算式には含まれていません。

Conditions

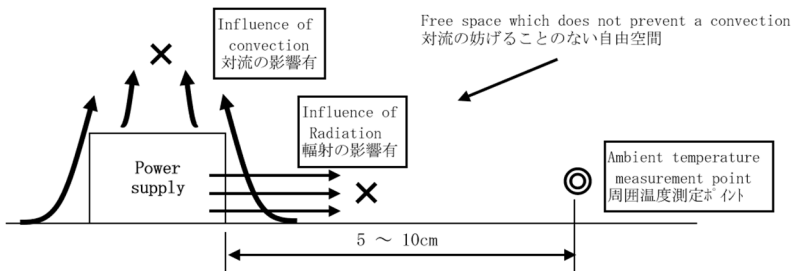
(1)Input voltage AC85~264V 60Hz

(2)Output voltage/
current

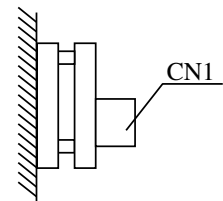
DC OUTPUT	Load factor			
	62%	46%	31%	18%
12V	33.3A	25A	16.7A	10A

(3)Cooling method Convection

(4)Mounting method Refer below



With the ambient temperature of graph, it measures in the environment of a figure.
グラフの周囲温度とは、図の環境で測定したものです。



Mounting method(B)