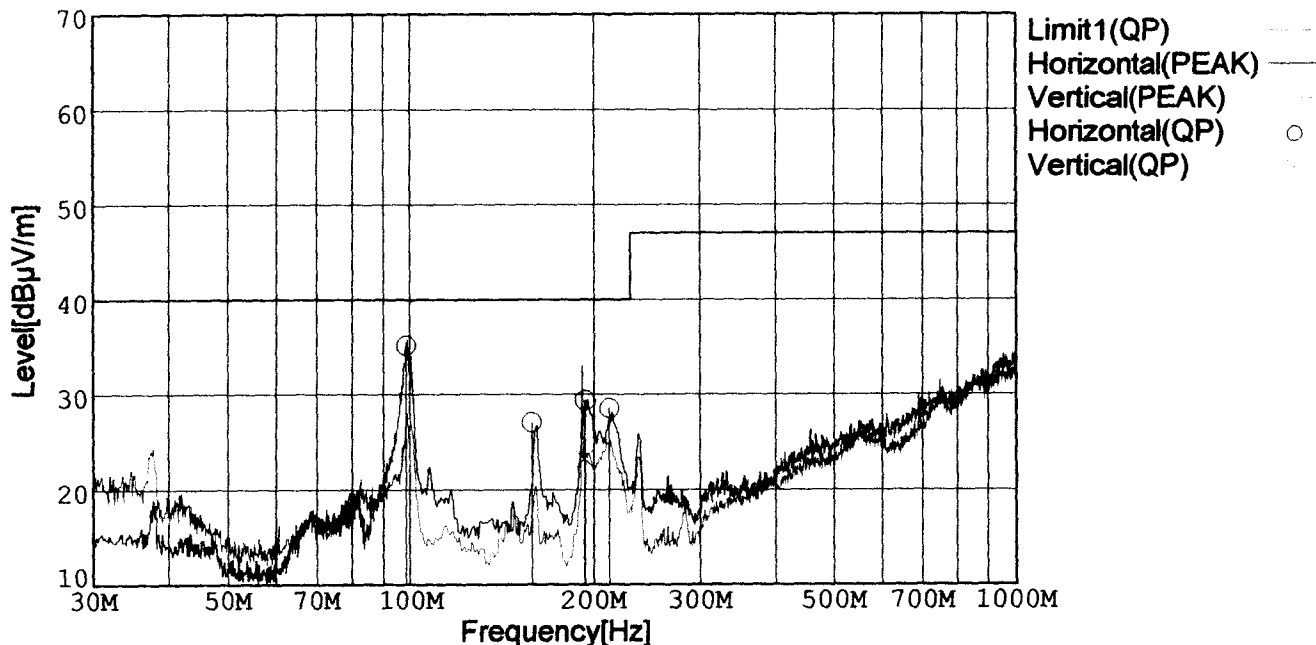




RADIATED EMISSION

Model Name : DBS400B15
 Model No. :
 Serial No. :
 Detector : PEAK/QP
 Points : 5
 Polarization : Hori. & Vert.
 Limit1: [EN 55022] Class B<3m>

Temperature : 25deg C
 Humidity : 45%
 Comment : Vin=AC230V,Io=100%
 Date : 2000/7/20 16:01
 EMI Receiver(s) : R3261A,ESPC



Frequency [MHz]	Meter Reading [dBµV]	Antenna Factor[dB]	Cable Loss[dB]	Level [dBµV/m]	Angle[°]	Height [cm]	Pola.	Limit [dBµV/m]	Margin [dB]
98.415	50.2	-28.2	13.2	35.2	85	159	Hori.	40.0	4.8
193.441	44.7	-27.5	12.2	29.4	47	120	Hori.	40.0	10.6
212.054	43.8	-27.4	12.1	28.5	23	104	Hori.	40.0	11.5
158.027	41.6	-27.7	13.2	27.1	40	147	Hori.	40.0	12.9
193.065	42.0	-27.5	8.7	23.2	14	128	Vert.	40.0	16.8

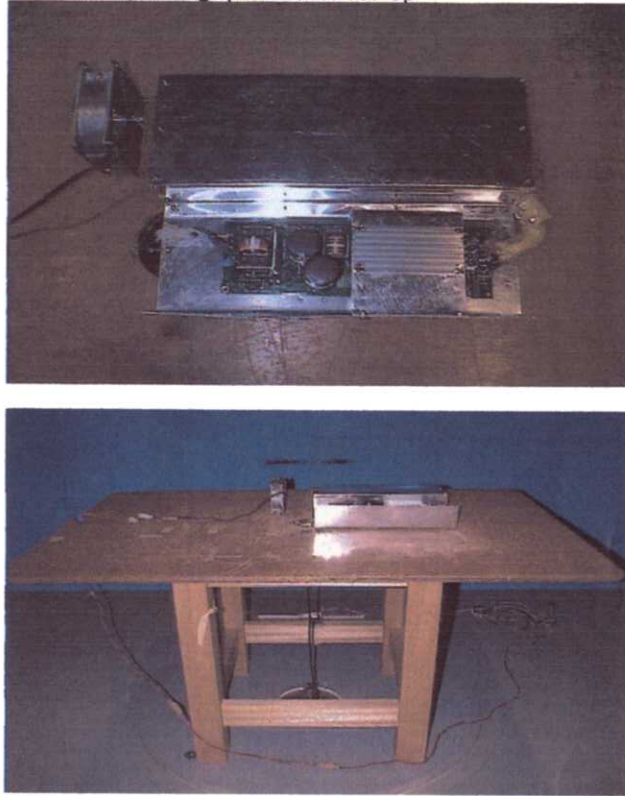
7103A6

Conditions

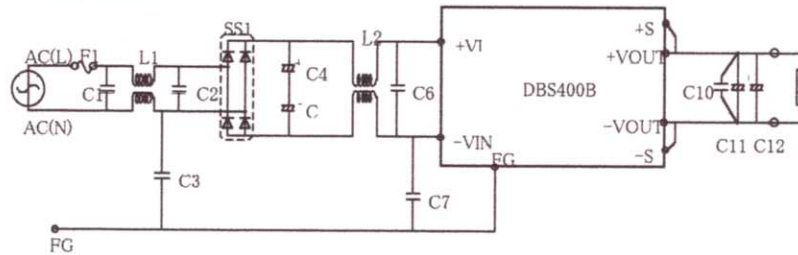
Date 2000/8/11

Test : RADIATED EMISSION
 Model Name : DBS400B

○Photographs of Test Set-Up



○Testing circuitry



- F1 : CES15 (SOC:15A 250V)
- C1、C2 : CFJC22E474M (NITSUKO:0.47 μ F 250V)
- C6 : CFJC22E224M (NITSUKO:0.22 μ F 250V)
- C4、C5 : LGQ2E102M (NICHICON:1000 μ F 250V)
- C3、C7 : DE1207-2E332M-KH (MURATA:3300pF 250V)
- L1 : SC-05-20J (TOKIN:2.0mH min 5.0A)
- L2 : SS28H-25045 (TOKIN:4.5mH min 2.5A)
- SS1 : D25XB60 (SINDENGEN:25A 600V)
- C10 : MDD21H104M5 (NITSUKO:0.1 μ F 50V)
- C11、C12 : Table 1(NIPPON CHEMI-CON)

Table 1

MODEL	C11	C12
DBS400B03	LZX10VB3300MK25	LZX10VB3300MK25
DBS400B05, 07	LZX10VB2200MK20	LZX10VB2200MK20
DBS400B12	LZX25VB1000MK20	LZX25VB1000MK20
DBS400B15, 18	LZX35VB1000MK25	LZX35VB1000MK25
DBS400B24, 28	LZY50VB820MK40	-

Fig 1. Testing circuitry



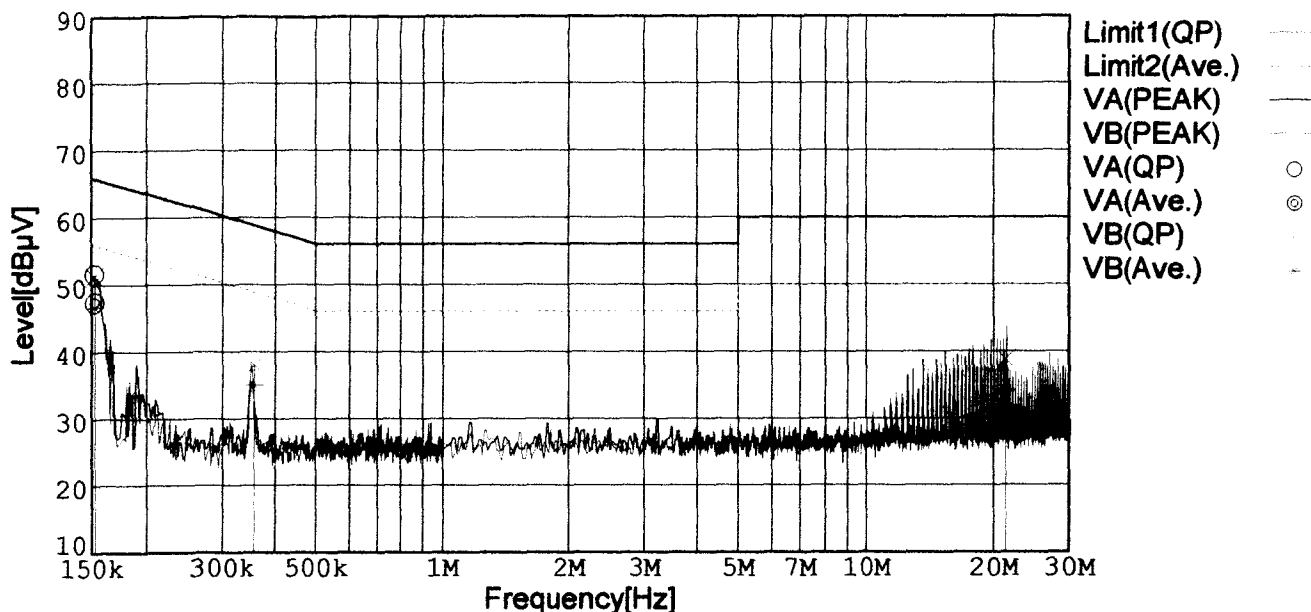
LINE CONDUCTION

Model Name : DBS400B15
 Model No. :
 Serial No. :
 Detector : PEAK/QP/Ave.
 Points : 3
 Line Mode : VA/VB

Temperature : 25deg C
 Humidity : 45%
 Comment : Vin=AC230V,Io=100%
 Date : 2000/7/20 17:30
 EMI Receiver(s) : R3261A,ESPC

Limit1: [EN 55022] Class B(QP)

Limit2: [EN 55022] Class B(Ave.)



Frequency [MHz]	Meter Reading (QP) [dBµV]	Meter Reading (Ave.) [dBµV]	Factor [dB]	Level (QP) [dBµV]	Level (Ave.) [dBµV]	Line	Limit (QP) [dBµV]	Limit (Ave.) [dBµV]	Margin (QP)[dB]	Margin (Ave.) [dB]
0.1525	41.3	37.0	10.3	51.6	47.3	VA	65.9	55.9	14.3	8.6
0.1525	40.9	36.4	10.3	51.2	46.7	VB	65.9	55.9	14.7	9.2
0.3573	27.7	24.7	10.3	38.0	35.0	VB	58.8	48.8	20.8	13.8
21.3203	27.9	23.4	10.8	38.7	34.2	VB	60.0	50.0	21.3	15.8

Conditions

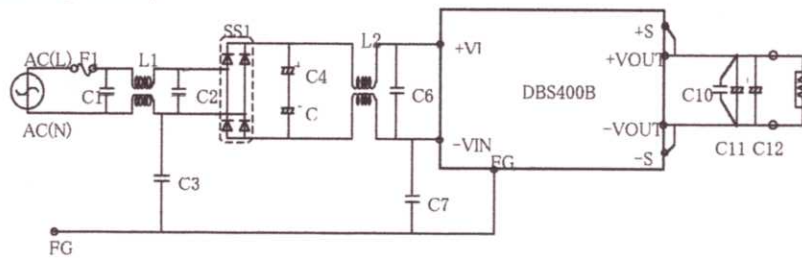
Date 2000/8/11

Test : LINE CONDUCTION
 Model Name : DBS400B

○Photographs of Test Set-Up



○Testing circuitry



- F1 : CES15 (SOC:15A 250V)
- C1、C2 : CFJC22E474M (NITSUKO:0.47 μ F 250V)
- C6 : CFJC22E224M (NITSUKO:0.22 μ F 250V)
- C4、C5 : LGQ2E102M (NICHICON:1000 μ F 250V)
- C3、C7 : DE1207-2E332M-KH (MURATA:3300pF 250V)
- L1 : SC-05-20J (TOKIN:2.0mH min 5.0A)
- L2 : SS28H-25045 (TOKIN:4.5mH min 2.5A)
- SS1 : D25XB60 (SINDENGEN:25A 600V)
- C10 : MDD21H104M5 (NITSUKO:0.1 μ F 50V)
- C11、C12 : Table 1(NIPPON CHEMI-CON)

Table 1

MODEL	C11	C12
DBS400B03	LZX10VB3300MK25	LZX10VB3300MK25
DBS400B05, 07	LZX10VB2200MK20	LZX10VB2200MK20
DBS400B12	LZX25VB1000MK20	LZX25VB1000MK20
DBS400B15, 18	LZX35VB1000MK25	LZX35VB1000MK25
DBS400B24, 28	LZY50VB820MK40	-

Fig 1. Testing circuitry